
2022 ANNUAL REPORT TO THE COMMUNITY



COMMUNITY / PHILANTHROPY / SOLUTIONS / NORTHEAST FLORIDA / OPPORTUNITY / ALL

FOR



THE COMMUNITY
FOUNDATION
FOR NORTHEAST FLORIDA

(904) 356-4483 | jaxcf.org

TABLE OF CONTENTS

Letter From The President & The Chair	1
Who We Are & What We Do	2
Looking Back at our 2022 Highlights	4
The Five Forms of Philanthropic Capital	9
For / COMMUNITY:	
o <i>Revitalizing the Eastside</i>	10
For / PHILANTHROPY:	
o <i>Cindy Edelman Excellence in Teaching Fellowship</i>	18
For / SOLUTIONS:	
o <i>MyVillage Project</i>	22
For / NORTHEAST FLORIDA:	
o <i>Academy of Building Technology</i>	26
o <i>The Arc Nassau</i>	28
o <i>Fort Mose Historic State Park</i>	28
o <i>Flagler Health Care Foundation</i>	29
o <i>Impact Clay</i>	30
For / OPPORTUNITY:	
o <i>Rethreaded</i>	31
For / ALL:	
o <i>WeaveTales</i>	36
Grants by the Numbers	40
Legacy Society Members	42
Funds at The Community Foundation	44
Board of Trustees	50
Meet the Staff	52
Financial Summary	53



LETTER FROM THE PRESIDENT & THE CHAIR

A decade ago, we intentionally changed our name from *The Community Foundation in Jacksonville* to *The Community Foundation for Northeast Florida*.

Many noticed the wider geographic focus; fewer folks remarked on the ‘for’ now in our name. But inserting ‘for’ was deliberate; we wanted the world to see that we weren’t just ‘in’ the community. This new preposition was a pledge: we were ‘for’ our donors, the nonprofit organizations with whom we work, and the greater community as a whole.

Fast forward ten years, and 2022 demonstrated how powerful that ‘for’ has become, particularly as we fully execute our five-year Strategic Framework that was introduced in 2021. We have capitalized on our growth by opening new doors for our fundholders, to the benefit of our community. In addition to the thoughtful grantmaking done on behalf of and in partnership with donors, we added a new stream of support by making local investments from our Local Capital Pool. We exposed more funders (our donors and others) to community issues through an expanded Donors Forum offering. A new cohort of young philanthropists in our Weaver Philanthropic Initiative learned about strategic giving and how to make the most of their generosity. We introduced not one, but two national organizations to local donors whose enthusiastic support prompted each organization (Thrive Scholars and The Bail Project) to launch a local presence in Jacksonville. In response to disturbing and negative events in our area,

we provided support (financial and organizational) to the local Jewish community. And we were delighted to officially become the home of The A.L. Lewis Black Opportunity & Impact Fund after two years of working with this very special collective giving initiative. Finally, we marked a historic milestone as the total gifts to The Community Foundation topped \$1 billion since our founding in 1964. Nearly \$700 million has been granted out during that time, the majority in Northeast Florida, and we are stewarding our endowed funds so that our core holdings can continue to generate support for nonprofit organizations in perpetuity.

Our wingspan has certainly increased since we made ‘for’ an integral part of our name, and more importantly, our mission. It is our honor to work FOR community, FOR philanthropy, FOR solutions, FOR Northeast Florida, FOR opportunity and most importantly, FOR all.

Onward,

Nina Waters
President

Brian J. Davis
Chair



WHO WE ARE & WHAT WE DO

AT THE COMMUNITY FOUNDATION FOR NORTHEAST FLORIDA

OUR MISSION

Stimulating Philanthropy to Build a Better Community

OUR VALUES

Grantmaking that is fair and thoughtful
Leadership that trusts and respects the intent of donors
Service to community that is innovative and creative
Governance with integrity that puts community above self
Equity centered as a core strategy of the Foundation

The Community Foundation for Northeast Florida is a tax exempt public charity that connects people who care with causes that matter.

Since 1964, we have served the residents of Duval, St. Johns, Nassau, Baker, Clay, and more recently, Putnam counties through a range of charitable and civic activities, while helping individual donors achieve their financial and philanthropic goals through our products and services. Through this rich history and in partnership with the generous individuals and families who have chosen to establish funds here, we have channeled more than \$695 million in grants to deserving organizations. We believe in Giving Back | Giving Forward.

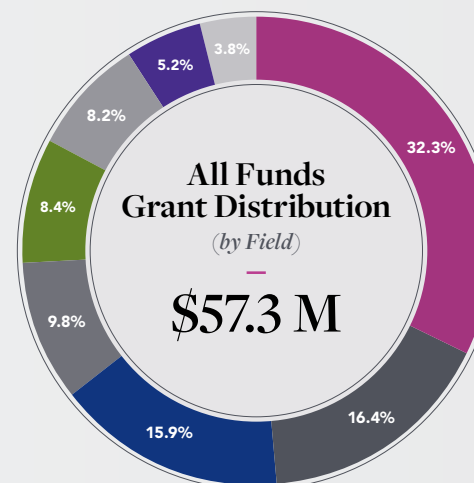


THE COMMUNITY FOUNDATION FOR NORTHEAST FLORIDA

Giving Back. Giving Forward.

“... As stewards of our donors’ philanthropy, we eagerly embrace our roles as connectors, navigators, researchers and trusted guides.”

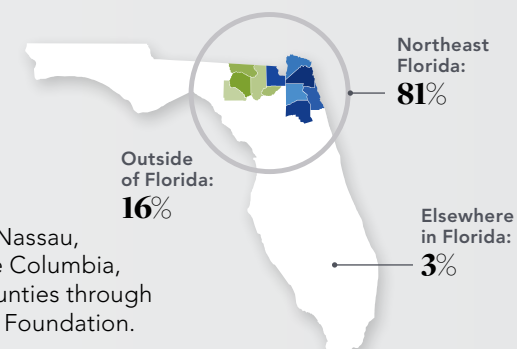
Nina Waters, President, The Community Foundation for Northeast Florida



\$18.5 M	32.3%	Human Services
\$9.4 M	16.4%	Education
\$9.1 M	15.9%	Health
\$5.6 M	9.8%	Religion
\$4.8 M	8.4%	Arts & Culture
\$4.7 M	8.2%	Civic & Community
\$3.0 M	5.2%	Environmental & Animal Protection
\$2.2 M	3.8%	Public Support

Serving Northeast Florida & beyond

We serve the residents of Duval, Baker, Clay, Nassau, Putnam and St. Johns counties. We also serve Columbia, Hamilton, Lafayette, Union and Suwannee counties through our affiliate, the Suwannee Valley Community Foundation.



\$534.2 M

TOTAL ASSETS



684

TOTAL FUNDS



38

NEW FUNDS



\$55.0 M

NEW GIFTS



\$57.3 M

GRANTS MADE



2,957

OF GRANTS MADE



1,211

GRANTEES

Sage Mother with Flame Baby
Tatiana Kitchen, 2022 Art Ventures grantee
Acrylic on canvas



LOOKING BACK AT OUR 2022 HIGHLIGHTS

We marked a major milestone as we surpassed
\$1 BILLION IN GIFTS TO THE FOUNDATION
and \$695 million in grants since our inception—a testament
to the generosity of the donors in Northeast Florida.

○ Thrive Scholars welcomed to Northeast Florida

Thrive Scholars expanded to Northeast Florida, the first site in the South, through our support. Thrive Scholars provides high-achieving students of color from economically under-resourced communities the opportunities they need to thrive at top colleges and in meaningful careers. The Community Foundation is investing **\$150,000** over three years, and we leveraged an additional **\$1.6 million** from local donors.



Left to right: Jim London, Nina Waters, David Miller, Scholars Blake Sheppard and Venezia Garza, Gary Chartrand, Nancy Chartrand, Monique Miller and Trisha London

○ The 9-8-8 Mental Health Hotline launched

In response to the growing mental health crisis, we made a **\$50,000** grant to NAMI Jacksonville to support a Family Navigator to connect people with peer counselors. The grant was part of a community-wide effort to launch the 9-8-8 hotline for mental health crises, a service now provided 24/7 through the United Way of Northeast Florida.





o **A new collective giving fund put into action**

In August, we launched a new collective giving initiative, the **A. L. Lewis Black Opportunity & Impact Fund**, and celebrated Black Philanthropy Month, highlighting the rich tradition of giving in the Black community. We were a major sponsor for the first Jacksonville Civil Rights Conference held in August, and we hosted a Donors Forum featuring Susan Taylor Batten, president and CEO of the Association of Black Foundation Executives.

o **Amplified efforts through Donors Forum**

We hosted six Donors Forum sessions on topics such as Affordable Housing, The Campaign for Grade Level Reading, The Broad Impact of the Emerald Trail and the Duval County Safety Net Collaborative. We expanded the format, and began producing video recordings and written recaps to extend the learning to even more fundholders and grantmakers who wish to learn more about important topics in community philanthropy.



Left to right: Michael Meyers, Barbara Drake, Fiona Strathern, Michael DuBow and Katie Ensign on a tour of the Emerald Trail.



o **Recognition of outstanding philanthropic impact**

We celebrated the impact of philanthropists as title sponsors of the **National Philanthropy Day** luncheon annual event that honors outstanding philanthropists and philanthropic organizations before more than 500 attendees. Nancy and Gary Chartrand, TCF fundholders, were honored with the Lifetime Achievement Award.

Above: The Honorable Brian J. Davis speaking at the event.



Mathews Bridge Sunset Views
Mark Krancer
2022 Art Ventures grantee
Photography (left & page 4)



Our very own Nina Waters honored for a lifetime of achievement

In fall 2022, Nina Waters was selected for the **Gold Medallion for Lifetime Achievement** from OneJax, recognizing her extraordinary impact and generous service to the community through 22 years at The Community Foundation, as well as exceptional dedication to OneJax's mission of promoting the dignity and respect of all people. Nina's son, Alex Waters, presented her the medallion onstage at the OneJax Humanitarian Awards in May 2023, before her September 2023 retirement.



The Bail Project set roots in Jacksonville

After exploring criminal justice reform, we led the charge to bring The Bail Project to Jacksonville. The Bail Project's successful model, "**Community Release with Support**," provides bail assistance and critical services to low-income individuals whom a judge has deemed eligible for release, avoiding pre-trial detention that carries significant cost to taxpayers and the family and work obligations of the individual. With a commitment of **\$150,000** from The Community Foundation and an additional **\$1.25 million** raised from other local donors, The Bail Project opened a Jacksonville office in partnership with Public Defender Charlie Cofer in 2022.



TCF staff, Charlie Cofer and Bail Project staff at Donors Forum.



Collective giving initiatives at The Community Foundation continued to grow

The **Women's Giving Alliance** celebrated a milestone of 80 legacy members, fueling an endowment that will support women and girls in perpetuity.

The **Beaches Community Fund** (pictured left) made more than **\$260,000** in grants to 14 Beaches-serving nonprofits that tackle the difficult issues facing their Beaches-area neighbors.



o Nonprofit Center's 20 years of support & success

The **Nonprofit Center of Northeast Florida** celebrated its 20th anniversary, looking back on its founding with support from The Community Foundation. President Nina Waters received the Sector Advocate Award, which recognizes an extraordinary level of service and commitment to the local nonprofit sector. The award has only been bestowed two other times in the organization's history.



o Backing our Jewish community

The **Jewish Federation & Foundation of Northeast Florida** received a **\$30,000** grant from The Community Foundation for the Community Security Initiative, a nationwide effort that supports local Jewish organizations, schools, and synagogues to improve security, crisis preparedness, and emergency communication.

The **Together Strong Community Fund**, established by David Miller on behalf of the Miller families with **\$1 million**, launched to address antisemitism and to promote community dialogue across religious differences.



The WPI Class of 2022 included: (back row, left to right) Lior Spring, Graham Riley, Haley Trager, Mike Hodge, Laura Hodge, Marcus Rowe, Megan Bush Del Pizzo, Josh Longmire; (front row, left to right) Nicole Brown, Blakely Stein, Lloyd Regas, Maureen Regas, Matt Del Pizzo.



o A new generation gets educated in strategic philanthropy

Thirteen rising generation philanthropists spent six months learning about strategic philanthropy through the **Weaver Philanthropic Initiative**, which marked its 23rd year in 2022. The WPI class learned about our community's needs and opportunities and how to maximize their charitable giving. At the program's conclusion, each participant chose a nonprofit to support, with a match from The Community Foundation, resulting in a total of **\$60,000** granted to 10 nonprofits.

Growth, Aluminum, Variable Dimensions
Wave, Styrofoam, Variable Dimensions
 Sheila Goloborotko, 2022 Art Ventures grantee
 Photo credit: Toni Smalagic



o 2022 Art Ventures Individual Artist Grantees

The Art Ventures Fund awarded grants of \$3,500 to 14 Northeast Florida artists after a record-setting number of applications. A mix of visual artists, filmmakers, writers and musicians were selected to receive a grant to support their artistic pursuits. For more information, go to jaxcf.org/arts.



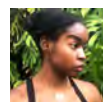
Cheryl McCain



Jennifer Chase



Thorn



RaeJeana Brooks



Sheila Goloborotko



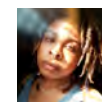
Mark Krancer



Shameera Wiest



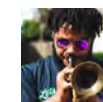
Joe Gaskin



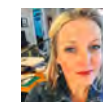
Tatiana Kitchen



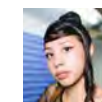
Malcom Jackson



Paul Jackson



Christie Holechek



Perla Reyes



Patrick Barry



THE FIVE FORMS OF PHILANTHROPIC CAPITAL

People often think of philanthropy in terms of monetary support—funds donated to charitable causes.

In a 2014 speech called “Beyond Grantmaking: Strategic Philanthropy and Civic Equity,” the late Ambassador James A. Joseph explained that financial capital is not the only asset philanthropists can use to make a difference. In fact, other forms of capital can be even more powerful tools to solve problems. What sets community foundations apart from other entities that offer Donor Advised Funds is their ability to deploy all five forms of philanthropic capital explained below. At The Community Foundation, we believe we can increase our impact by using a multi-pronged approach in everything that we do. In the following pages, we highlight one type of capital that is uniquely exemplified in each story.



SOCIAL

- *Connecting people*

Maintaining and building the networks of trusting relationships on which every community relies.

It's activated by building “bonding” social capital (networks among similar types of people) and “bridging” social capital (networks between different types of people).



MORAL

- *Bringing important issues to the forefront*

Taking moral stands and altering the public conversation.

It's activated by helping decision-makers and/or the public face and address unpopular or controversial issues that hold communities back from success.



INTELLECTUAL

- *Putting your expertise to use*

Helping a community and its decision-makers better understand issues, so the issues can then be addressed.

It's activated by using your expertise (or your connections to people who have that expertise) and your means of communication to bring new research, analysis, knowledge or wisdom to an issue.



REPUTATIONAL

- *Vouching for other organizations*

Leveraging one's own reputation to increase public trust in people, organizations and ideas that don't yet have credibility, social ties or networks.

It's activated by lending your own positive reputation to place bets on new or different people, organizations or ideas.



FINANCIAL

- *Monetary support*

Supplying financial resources to support, grow, initiate, advance or change organizations, people and ideas.

It's activated by being thoughtful about how and where you make financial gifts, resulting in the highest return on your philanthropic investments of financial capital.



FOR / COMMUNITY

- Revitalizing the Eastside



SOCIAL CAPITAL:

*The Community Foundation **connects people** by building relationships with donors and introducing them to nonprofits when they share a common goal.*



'WITHINTRIFICATION'

“Most low-income residents feel that no one cares for them. Investing in the Eastside is really a LOVE LETTER to our community to say ‘there is someone who cares about you and your family and the quality of life you deserve.’”

Suzanne Pickett, President and CEO of Historic Eastside Community Development Corporation (pictured left)

Jacksonville’s Historic Eastside—proud home of generations of African-American families—is being revitalized by hard working residents and partners who are determined to celebrate its history, chart its future and, most importantly, leave no one behind.

Bounded by the city’s expanding sports district, the Talleyrand Shipyards area and Historic Springfield, the Eastside has endured years of decline and underinvestment. But beneath its often dilapidated appearance, opportunities for improvement abound: scores of classic vernacular homes, significant parks and greenspace, and of course, proximity to exploding growth,



as major investments in the Sports and Entertainment District come into focus.

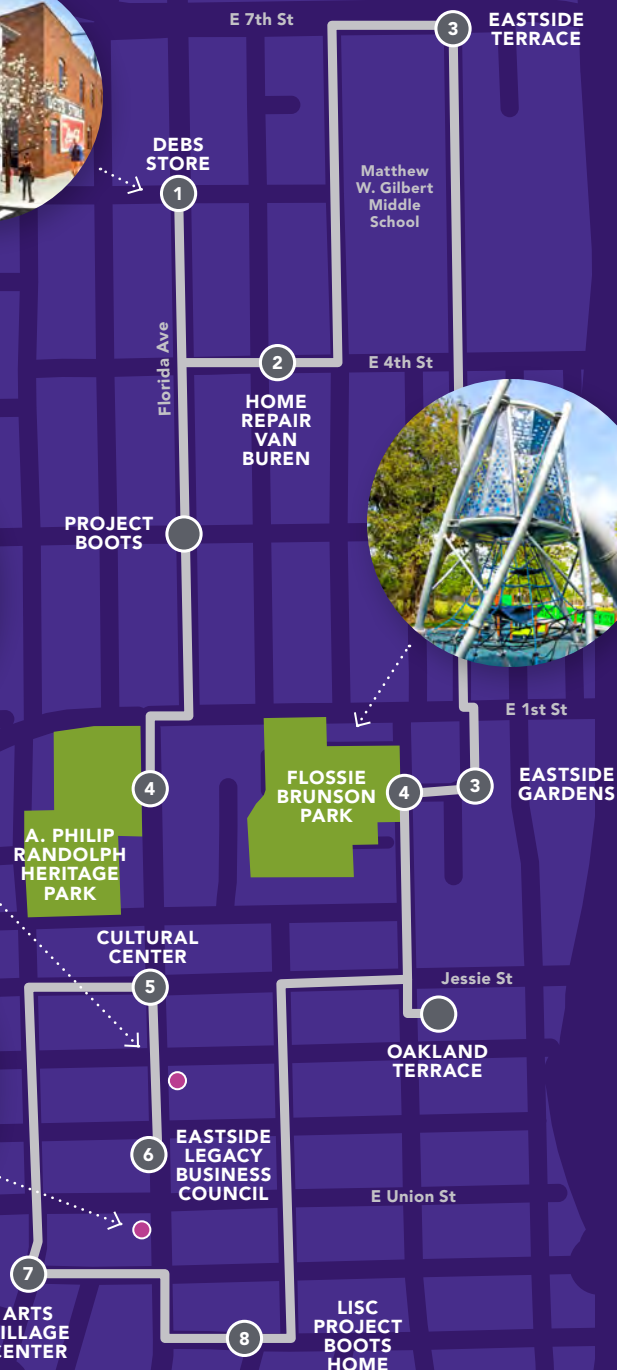
Historic Eastside leaders see the potential, and are determined to maximize it without the displacement of current residents.

Suzanne Pickett, president and CEO of Historic Eastside Community Development Corporation (HECDC), calls this process ‘withintrification’—an alternative to gentrification that is driven from within, by residents. She has worked tirelessly to share the vision of a revitalized Eastside with partners and donors, and to bring a message of hope to the residents.

HISTORIC EASTSIDE REVITALIZATION PROJECTS



Justice Worthy
Tatiana Kitchen
2022 Art Ventures grantee
Exterior wall mural



'Withinthriftification' continued

Partners like LIFT JAX, LISC Jacksonville and The Community Foundation, among others, are working together with those who live 'OUTEAST' on projects designed to build on the neighborhood's past but serve those who live there now, and attract new residents to the area.

- o **Debs Store** (#1): returns a landmark grocery store to the community which has been a food desert in recent years
- o **Restore and Repair** (#2): helps homeowners with needed improvements so they can stay safely in and enjoy their homes. (see page 14)
- o **Eastside Terrace and Eastside Gardens, affordable apartments** (#3): goal is to repurpose them into safe, beautiful apartments.
- o **Parks Initiative** (#4): Revitalizes and activates the area's parks and greenspace to serve Eastside residents. (see page 15)
- o **Cultural Center** (#5): engages youth in the neighborhood's culture and history through a recording studio, visual arts, coding, gaming, graphic design and motion graphics, and also serves as an art gallery.
- o **Eastside Legacy Business Council** (#6): supports 13 businesses that are the commercial backbone of the Eastside. 'Placemaking' investments like murals from local artists visually enhance the area
- o **The "AVE" ('Arts Village Eastside')** (#7): six row houses built in 1904 being repurposed for affordable housing. The AVE refers to A. Phillip Randolph Boulevard's former name, Florida Avenue.
- o **Project Boots** (#8): builds new houses for middle-class homeownership on vacant lots. (LISC Jacksonville)
- o **John Love Early Learning Center** (#9): Duval County Public Schools helps three and four year olds get kindergarten ready using hands-on learning and state of the art technology with the support of The Community Foundation



Travis Williams, VP, Operations and Impact, LIFT JAX (pictured right), grew up in the Eastside. He remembers it as having a mix of blue collar workers like his grandfather, and professionals—attorneys, educators, medical professionals. And he believes that the Eastside can be that again—if there are amenities and investment in the neighborhood that has lacked both for too long.



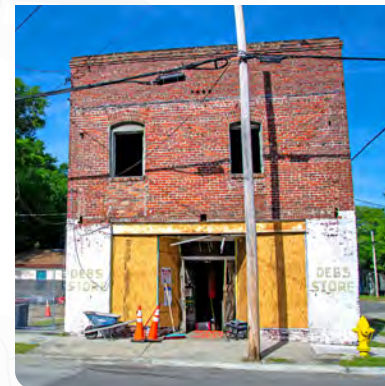
“Our goal is to support community leaders and residents in what’s important to them—whether it’s housing, bringing back a grocery store, or park development. We want to make strategic investments here so that this a neighborhood of choice.”

Travis Williams, VP, Operations and Impact, LIFT JAX



Debs Store as it looked in the 1980s. It is also the basis of current restoration efforts. Gene Debs, left, and his brother Nick standing behind the counter of Debs Store at the corner of Florida Avenue and Fifth Street in east Jacksonville.

After the passing of Gene and Nick, the family made the difficult decision to close after 90 years in 2011 rendering the Eastside, by definition, a food desert. However, Lift Jax and the Debs family began renovations to reopen and double its size in 2022 with the help of Goodwill and VyStar incorporating original architectural details, photos, equipment, and artifacts.





Above: before / in construction. Right: completed renovation



o Restore and Repair: The Model Block – Van Buren Street

Restore and Repair is one of the Eastside's signature efforts.

Its goal is to help longtime residents with limited financial means make improvements to their homes to ensure their safety and improve livability. The improvements also help homeowners preserve generational wealth. The Historic Eastside CDC, LIFT JAX and LISC Jacksonville are spearheading the project, which can include replacing roofs, HVAC systems, flooring, facades and paint.

Restore and Repair's original goal was to improve 20 homes, one-by-one. Then, philanthropist Delores Barr Weaver worked with The Community Foundation staff on

a concept of creating a model block – one where the homes were improved, and funds were available for beautification of the area, as well as the historic church in its midst. Through her Delores Barr Weaver Legacy Fund, she sought to improve an entire model block so that the community could see what it might look like when the vision was fulfilled.

"(Suzanne's) passion for this project, and her commitment to help these longtime homeowners, was compelling," Weaver said.

So far, 10 out of 14 houses on Van Buren street have been repaired, and the goal is to repair 50 homes across the entire neighborhood.

"It was clear to me that by investing in these homes, we are also supporting the homeowners' rightful pride in their neighborhood, and that everyone would benefit from the improvements."

Delores Barr Weaver

HOME
REPAIR
VAN
BUREN



How The Community Foundation is supporting the Eastside

The Community Foundation has worked to uplift neighborhoods for decades.

We helped bring the Local Initiatives Support Corporation (LISC) to Jacksonville more than 20 years ago, and continue to fund it annually. We also made grants directly to numerous small and grassroots organizations over the years. Several years ago, we increased TCF's funding and support of organizations like LISC Jacksonville, LIFT JAX and the neighborhood Community Development Corporations (like Historic Eastside CDC) that were large enough to have the tools and infrastructure to work alongside affected residents.

We redoubled our commitment to not only provide funding, but to bring our intellectual, reputational, social and moral capital to the table.

LIFT JAX IS A PRIME EXAMPLE.

LIFT JAX grew out of conversations held in 2017 among a group of Jacksonville's business and community leaders, including TCF, who were focused on eliminating poverty in the city.

The Community Foundation gave LIFT JAX a two-year, \$100,000 grant for initial start-up operational support in 2020-2021, and made an additional grant to support a LIFT JAX with a STEM

education program at John Love Early Learning Center, opened by Duval County Public Schools in the Eastside.

"Even before we were called LIFT JAX, we turned to The Community Foundation for guidance and support," shared David Garfunkel, president of LIFT JAX. "The Women's Giving Alliance, under the leadership of Ellen Wiss, was our early thought partner and inspiration."



Flossie Brunson Park was founded in 1974, and much of its playground equipment was more than four decades old. LIFT Jax, the HECDC and generous donors—including the Chartrand family, fundholders at The Community Foundation, the Jacksonville Jaguars, Florida Blue, and Friends of Jax Playgrounds—came together to renovate the playground with state-of-the-art equipment and accessible surfacing. The improvements are part of a larger effort to activate and restore the park, through increased lighting, new walking paths, and renovated basketball courts.



"TCF has had a long-term focus on neighborhood revitalization, so they immediately recognized the potential for partnership and have been an essential part of our success."

David Garfunkel, President, LIFT JAX





“Historic Eastside is finally getting the recognition and tools that it needs to continue being a thriving African-American community.”

Iris Moody, Eastside resident for 22 years and Vice President of the Historic Eastside CDC



“Our goal is for Eastside to be a complement to the community around us.”

Suzanne Pickett, President and CEO of Historic Eastside Community Development Corporation



Renovations to Flossie Brunson Park's playground were funded through the generous support of the Chartrand family and Kim and Bryan Clontz (through Friends of Jax Playgrounds), TCF fundholders, as well as the Jacksonville Jaguars and Florida Blue.

Eastside continued



Suzanne Pickett (left) with TCF fundholder, Linda Watkins

We continue to expose other interested donors to opportunities to invest in neighborhoods.

One such match was made when TCF fundholder Linda Watkins became intrigued with Suzanne Pickett's work.

Watkins worked with Pickett, TCF President Nina Waters, TCF Senior Director, Grantmaking and Impact Investing, James Coggin to understand the need, and she offered to fund an intern for the HECDG through her Catherine M. Drompp Charitable Fund. Watkins continues to be involved with the HECDG, providing computers and gaming consoles for the computer lab in HECDG's Cultural Center so that they can offer coding camps for kids.





FOR / PHILANTHROPY

○ Cindy Edelman Excellence in Teaching Fellowship

INTELLECTUAL CAPITAL:

The Community Foundation puts expertise to use by advising donors on how best to achieve their philanthropic goals.



GIVING BACK TO TEACHERS

“It’s the most BEAUTIFUL GIFT I’ve ever received...” Cindy Edelman

Several years ago, Dan Edelman wanted to find a way to honor his wife, Cindy, on a milestone birthday and reached out to The Community Foundation for help.

Cindy Edelman is a former teacher, an education champion and a dedicated philanthropist who served as the chair of the board of trustees of The Community Foundation from 2010-2011. She was also the co-chair of the 10-year Quality Education for All Initiative.

“One of our greatest joys at The Community Foundation is to guide donors through the process of creating legacy gifts that are most meaningful to them,” said Nina Waters, President of The Community Foundation. *“It became clear in conversations with Dan that Cindy’s passion for teaching would be at the center of this gift.”*

When she was a teacher of Advanced Placement Art History at the Bolles School, Dan saw how important professional development was to her growth as a teacher. At Bolles, Cindy was able to pursue any learning she felt she needed to better serve her students.

Working together, Dan and The Community Foundation staff came up with the idea to create a fellowship that would support professional learning for teachers in



Left to right: Dante Jennings, director of strategic initiatives, Jacksonville Public Education Fund (JPEF); Rachael Tutwiler Fortune, JPEF president; Cindy Edelman; Tori Peoples, Edelman Fellowship Selection Committee; Pinedale Elementary reading coach and Fellowship winner, Kimberly Chandler; Dan Edelman; Latrese Fann, DCPS regional superintendent; and Zachary Champagne, Edelman Fellowship Selection Committee



district and charter public schools. It would allow Duval County’s brightest teachers to craft the professional learning experience of their dreams, and then bring the learning and inspiration home to their students.

In 2017, the Cindy Edelman Excellence in Teaching Fellowship was born. It allows individual teachers or teams of teachers to design a learning experience and seek funding up to \$6,500 per teacher or \$10,000 per

teacher team to make it possible. Even more generously, Dan Edelman endowed a fund at The Community Foundation to support it in perpetuity.

Cindy was entirely surprised. *“It’s the most beautiful gift I’ve ever received, because it’s impacting teachers,”* she said. *“Teachers give so much of themselves, and it just seemed like it was a wonderful way to give back.”*



THE CINDY EDELMAN

EXCELLENCE in Teaching Fellowship

The Fellowship is administered by the Jacksonville Public Education Fund, which Cindy helped found in 2009 as a high-capacity local education fund that conducts research and leads innovative efforts to improve educational outcomes in Duval County. She served on the board of JPEF for a decade, including as its chair.

"The Cindy Edelman Excellence in Teaching Fellowship is an unprecedented opportunity for public school teachers in Duval County, and I am so grateful to my friends Cindy and Dan for their generosity in making it possible," said JPEF President Rachael Tutwiler Fortune. She continued:

**"When we invest in teachers,
we invest in children and a
brighter future for Jacksonville."**

Fellows have put their elevated teaching skills to work.



o **Denisha Campbell:** *A speech pathologist with newfound goals*

In 2020, Denisha won the Edelman Fellowship to take a Spanish immersion trip to Puerto Rico. The speech language pathologist was rotating between several public schools in Duval County, working with Hispanic students, and she wanted to communicate better with her students learning English. After her trip, she put together a hands-on workshop for other teachers in Duval County in partnership with Mayo Clinic's Simulation. Today, she is pursuing a PhD in speech language pathology at Florida State University, and has been selected for a Fulbright Scholarship to teach English abroad.

"Through the Edelman Fellowship, I've been able to build my networks, complete what I set out to do, and I now have a better idea of how I want my professional career to aid in the fight against achievement gaps."

o **Scott Fretz:** *Traveling for a deep-level of learning and teaching*

As a gifted teacher at Duncan Fletcher Middle School in Jacksonville Beach, Scott traveled to the Badlands National Park, Mount Rushmore, the Minutemen Missile Historical Site, and the Museum of Geology to learn about geology, history, and culture in the Western United States.

He brought his learning, videos, and experiences home to enrich his curriculum in Global Scholars, a gifted middle school course.

"It's one thing to learn something in training or from a book, but when you go on a field trip, that's where that deep-level learning takes place. That's what this is all about—taking that deep-level learning and sharing it with students."



o **Stephanie Montoya:** *Real-world science makes a grand presentation*

Stephanie, a science teacher at LaVilla School of the Arts, located downtown, was selected for the Edelman Fellowship in 2022 to bring real-world science into her classroom. She joined the Earthwatch Institute to conduct research on sharks and reef life in Belize, spending a week with indigenous Maya fishermen to learn how culture and conservation intersect.

She brought her learning back to the classroom with a research project on sharks. Her students then presented their findings at the Riverside Arts Market (pictured right).



“I was very excited to see that I could bring what I learned in Belize back to my students. I’m so grateful to the Cindy Edelman Excellence in Teaching Fellowship for giving me this opportunity.”

Stephanie Montoya, 2022 Edelman Fellowship Winner (pictured top center right)



FOR / SOLUTIONS

○ MyVillage Project



REPUTATIONAL CAPITAL:

The Community Foundation builds trust in community organizations by making investments that lend credibility to their work.

Kreatively
I am a leader; each
day I will think of
new ways to
better, creatively
with a Mega Force
always walking,
thinking living and
performing with a
purpose. But most
importantly I am
kreatively me!
-Lisa

IT TAKES A VILLAGE

“The status quo has been inadequate funding for Black organizations. The Community Foundation has been LEADING THE WAY, helping us receive significant grant funding, and distributing it in a way that’s unique for us. It’s filling a gap—and that should be applauded.”

Ronnie King, founder of MyVillage Project

In Ronnie King’s family, there was never a question about the value of education.

Growing up in Tampa, his father was in the military, and his mother split her time between taking care of the family and volunteering in his school.

“If you can get communities and families engaged, a lot of the other stuff will take care of itself,” he said. *“You can have all the tools and the programs and the initiatives, but I was probably going to end up all right because there was huge family engagement in my education.”*

Today, King is doing better than all right. He’s the owner of a software company, Scratchwerk, and spends significant time giving back to the community.

The MyVillage Project was created in 2013 to support small nonprofits run by neighborhood leaders, Black fraternities and sororities, churches, and other community groups that were fueled not by funding but by a desire to give back. These largely volunteer-led nonprofits were making a difference by and for their own communities: running after-school activities, early learning programs,

athletic programs, voter registration campaigns, partnerships with local schools, and more.

If we define philanthropy as giving time, talent, and treasure, these were groups doing more with less because they leveraged the first two so well.

“They have run sustainable programming for our kids for the longest time,” King (pictured above) says. *“Imagine if we gave them some funding.”*





In 2017, he participated in The Community Foundation's Weaver Philanthropic Initiative. He met two other Black leaders, Darryl Willie and Imani Hope, and each made their \$5,000 grants through the program to create and seed the MyVillage Project Community Fund at The Community Foundation, inspired by the collective funding approach of the Women's Giving Alliance.

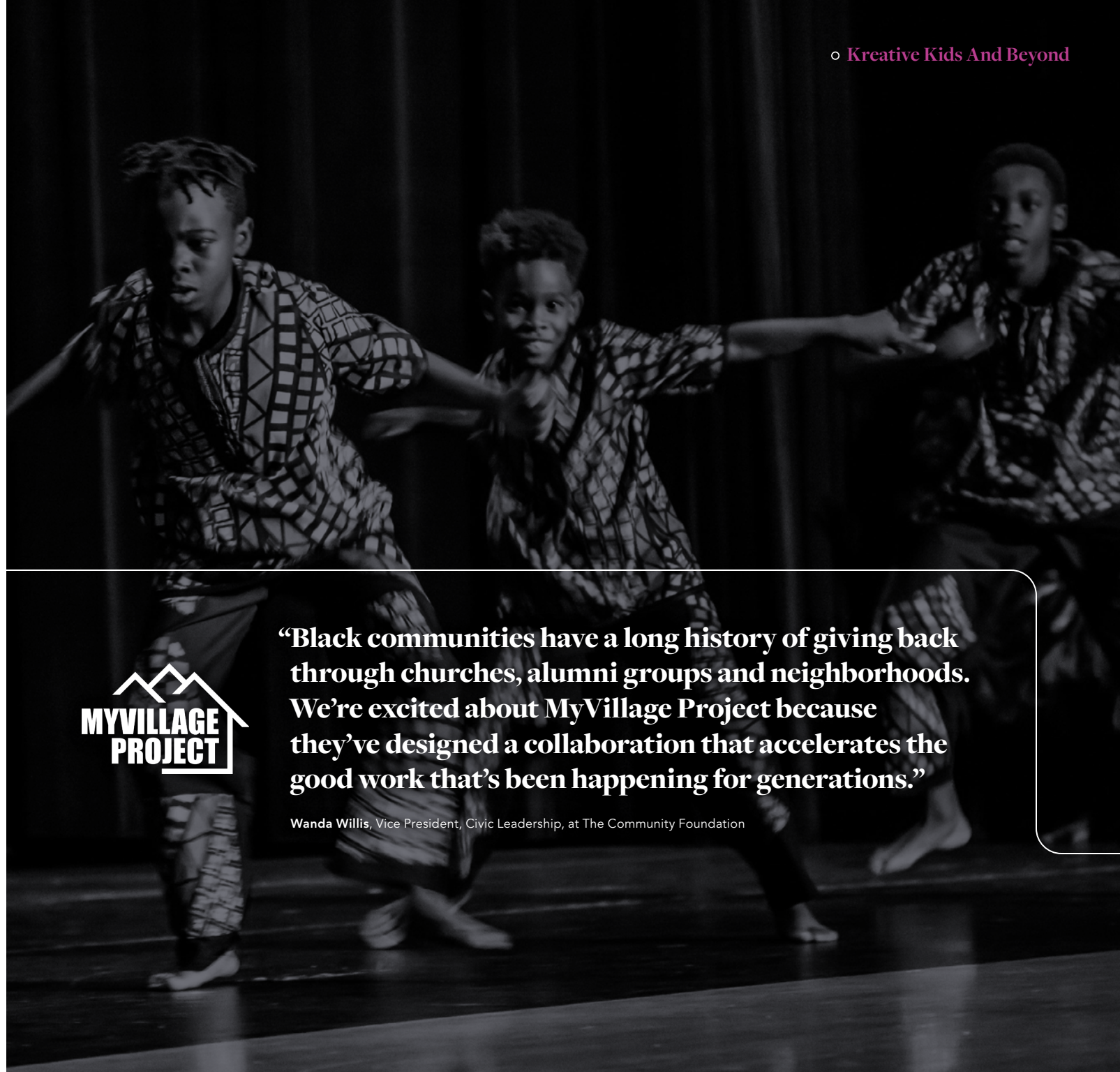
The MyVillage Project Community Fund makes grants to these organizations that go directly into programming because they have little to no staff costs. For example, MyVillage Project has created an award and incentive program to promote school attendance – students and their families receive recognition and gift boxes for coming to school regularly and on time, and volunteers run the entire program.

More recently, MyVillage Project has started using grant funding to support the organizations that pay students to develop their own educational games, which can then be shared with other students to promote learning in a way that naturally connects, because it's built for and by students like them.



“Black communities have a long history of giving back through churches, alumni groups and neighborhoods. We’re excited about MyVillage Project because they’ve designed a collaboration that accelerates the good work that’s been happening for generations.”

Wanda Willis, Vice President, Civic Leadership, at The Community Foundation





- **Delta Sigma Theta Sorority, Jacksonville Alumnae:** The local chapter participated in "Delta Days" at the U.S. Capitol to discuss the needs of local communities with lawmakers, including U.S. Senator, Rick Scott.

MyVillage Project is also working on scaling up from Jacksonville into other communities, through the network of community foundations across Florida, including with Tampa, Orlando, Gainesville and Miami, to help them replicate the model locally.

The work has attracted the attention of national funders, and the Walton Family Foundation made a generous grant for three years to help MyVillage Project develop, test, and replicate the model, with the support of The Community Foundation for technical advising and grantmaking.

In the future, King also hopes more donors at The Community Foundation will see the value of the approach and further fund small, grassroots organizations with their philanthropic dollars.

Visit myvillageproject.com.



○ **Delifus Foundation:**

The Shawn D. Delifus Foundation teaches children from underserved communities to swim. Named after Shawn DeAngelo Delifus, the late Olympic swim coach and Jacksonville native, the organization is led by his mother, Joyce Delifus.



MyVillage Project is using people power to transform communities:

124+
ORGANIZATIONS
& GROWING

48K+
STUDENTS
SERVED

376+
PROJECTS
FUNDED



FOR / NORTHEAST FLORIDA

- Academy of Building Technology
- The Arc Nassau
- Fort Mose Historic State Park
- Flagler Health Care Foundation
- Impact Clay



FINANCIAL CAPITAL:

The Community Foundation provides monetary support by making thoughtful discretionary grants that offer the highest return on investment to the community.



A REGIONAL IMPACT

“It’s remarkable that we have surpassed the \$1 million in grants milestone in just seven years of grantmaking. Frank would be delighted to see WHAT A DIFFERENCE his generosity is making in Putnam County.”

Joyce Oliver, the donor’s widow, in 2019

o **Constructing a New Workforce for Putnam County**

The hammers are pounding at Interlachen Jr-Sr High School in Putnam County where the new Academy of Building Technology is up and running.

Thanks to a \$100,000 grant from the Frank V. Oliver, Jr. Fund at The Community Foundation, local teens who seek a future in the high-demand building trades—plumbing, electrical, masonry, HVAC and carpentry—can get a head start on their careers. The grant helped renovate space at the school to create a fully-functioning workshop, including start-up materials, and to help with hiring an educator.

Putnam County Schools Director of Career and Technical Education, Renee Hough, secured more than

\$500,000 in additional funding from the State of Florida, and the program now has nearly 60 students enrolled.

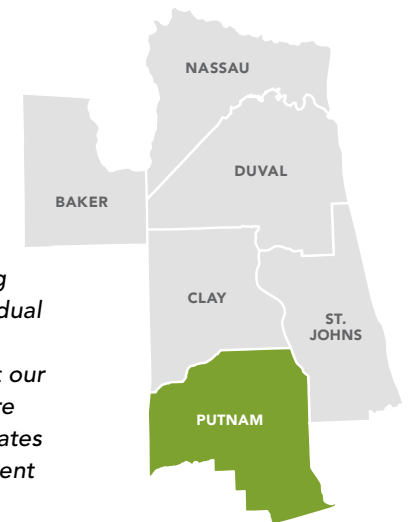
“Frank was committed to Putnam County students having more educational opportunities, and we are delighted that our largest grant to date will support the Academy



Putnam district officials with Joyce Oliver (second in from right).

of Building Technologies,” said Joyce Oliver, Frank’s widow, and a member of the Fund’s Community Advisory Committee.

“This kind of career training will benefit not only individual students whose career potential will increase, but our entire community as we are able to retain these graduates with sustainable employment opportunities.”



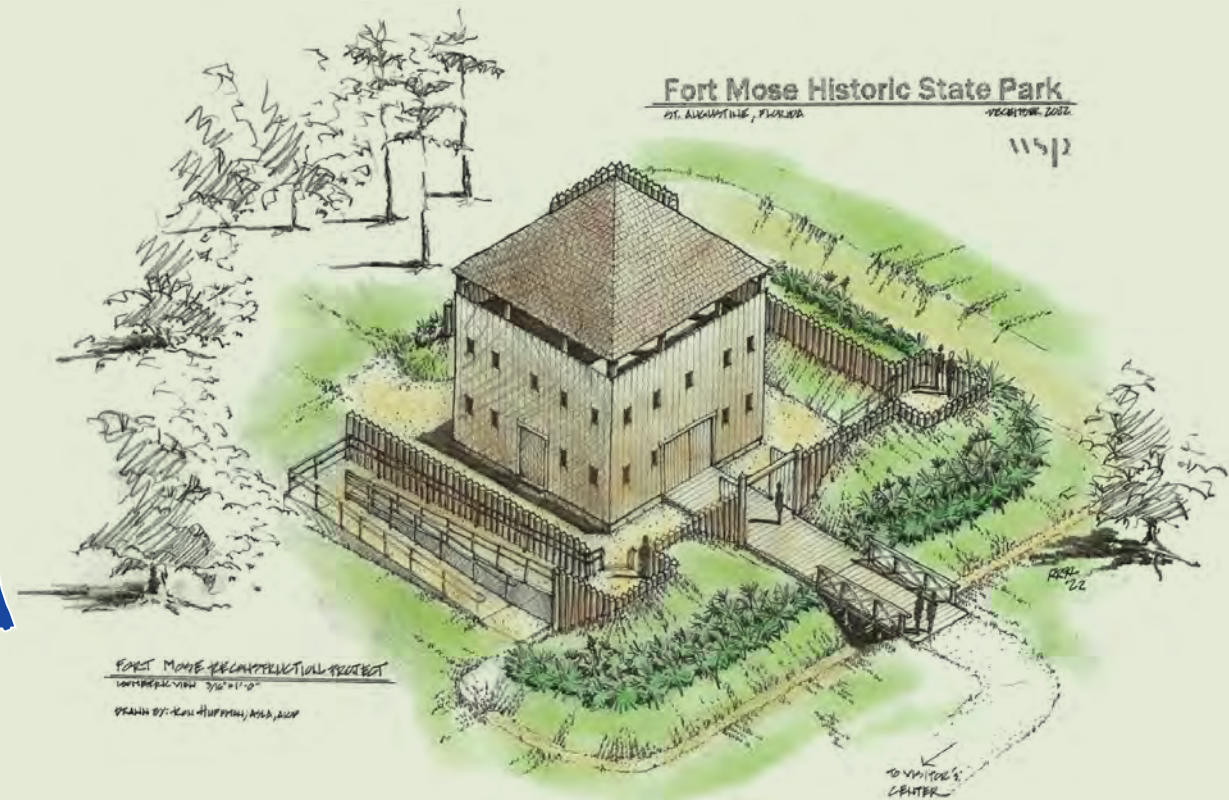
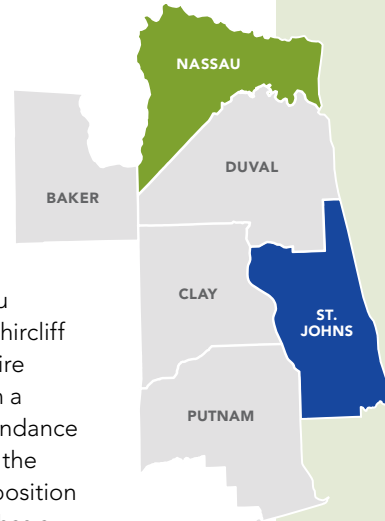


o Preparing for the future

The Arc Nassau has been providing programs and services for adults with intellectual and developmental differences for more than 49 years.

Following the pandemic, The Community Foundation's \$25,000 grant was crucial for meeting the growing need in greater Nassau County through the Robert T. and Carol R. Shircliff Charitable Trust and Donald and Terri McIntire Fund. It allowed the organization to bring on a part-time Trainer for Life Skills. As client attendance grew from 12-15 on an average day to 18-22, the organization was able to support a fulltime position and an extra day of programming, and now has a Life Skills Development roster of 26 clients.

Visit thearcnassau.org.



o Rebuilding for history

Visitors to Fort Mose Historic State Park in St. Augustine can soon stop asking, 'where's the fort?'

A life-sized, full scale reconstruction of the structure will open in 2024 on the site of the first legally-sanctioned free African settlement in what is now the United States.

Established in 1738 as a military and residential community, Fort Mose was inhabited by men and women who escaped enslavement on British plantations and were able to survive the perilous journey to this settlement. The fort itself was destroyed in the Battle of Bloody Mose, but The Fort Mose Historical Society and the Florida State Parks Foundation recently secured a grant of \$933,500 from the Florida African American Cultural and Historical Grants Program to bring the fort to life.

We joined with Florida State Parks, the Jacksonville Jaguars Foundation, Florida Blue and St. Johns County to contribute an additional \$250,000 in matching funds for the project. The Community Foundation has supported Fort Mose since 2021, when we helped fund the development of an interpretative trail on the park site highlighting the Flight to Freedom.

Visit fortmose.org.



"There just aren't enough hours in the day to express our heartfelt thanks to The Community Foundation. What a beacon of hope this grant has been."

Jennifer Paulk, Director of Marketing and Development, The Arc Nassau



◦ Creating housing *for* Local Veterans

An innovative partnership in St. Johns County is making a meaningful difference in the lives of local veterans who are unhoused.

This summer, Flagler Hospital's Care Connect+ and St. Johns Housing Partnership (SJHP) are opening a six-unit, single bedroom complex known as Patriot Place. Data showed that 86 percent of homeless veterans in the

county are single individuals who often suffer from PTSD, making it difficult to live in group settings.

Patriot Place will have services including case management and veteran peer support, as well as tenant assistance and linkage to mental health, medical and social service providers. SJHP provided the land and funded the construction of Patriot Place, and will

serve as the landlord. Flagler Health+ will provide case management and holistic services to assist these veterans. A \$25,000 grant from The Community Foundation to Flagler Health Care Foundation will help with the tenant assistance fund as well as support a staff person to focus on this veteran homeless population.

Visit flaglerhealth.org.

“It is extremely rewarding to see Patriot Place come to life, specifically supporting veterans in our community who have given so much.” Jason Barrett, Former President & CEO of Flagler Health+



Rendering of Patriot Place.
Project to be completed
near the end of 2023.





“Transitioning into the position of CEO of Impact Clay has been much smoother due the great support of The Community Foundation. With funding readily available to focus on a new expansion of services, I did not feel I had to grasp for funding and instead could focus on bringing the community together to immediately benefit our citizens.”

Connie Thomas, President and CEO, Impact Clay

Northeast Florida *continued*



◦ **Working Together *for* Change in Clay County**

Capacity building grants can be critical fuel to a spark created by a nonprofit.

Such was the case for Impact Clay, which links the private, public, nonprofit and faith-based sectors to improve the community. With the help of a \$10,000 capacity building grant, Impact Clay opened the Impact Clay Professional Center, a space to bring together nonprofit leaders and promote collaboration.

During one collaborative meeting, grassroots organizations Seeds of Love and Saved to Serve shared a need for security for a Back to School Bash. Clay School Superintendent David Broskie was in attendance, recognized the opportunity, and immediately offered the Clay School Police to handle security, paving the way for 1,400 students to receive new backpacks and clothing, haircuts and school physicals at no charge. The collaborative solution reinforces the benefits of bringing community leaders together to quickly fill a need and improve the community in ways that a single non-profit would not be able to do.

Visit impactclay.org.



A MEETING + AN IDEA
resulted in:



Dedicated Clay County School Police
EVENT SECURITY



1,400 STUDENTS
receiving new backpacks and clothing, haircuts and school physicals at no charge



FOR / OPPORTUNITY

o Rethreaded



INTELLECTUAL CAPITAL:

The Community Foundation puts expertise to use by advising nonprofits on how to engage philanthropy to achieve their missions.

Kristin Keen, founder of Rethreaded, at the Delores Barr Weaver Campus of Hope, which opened in 2021.

STEADY EFFORTS LEAD TO ENDLESS POSSIBILITIES

“I remember thinking, ‘THESE WOMEN ARE GOING TO CHANGE THE GAME’ and they did.”

Kristin Keen, founder of Rethreaded about the Women’s Giving Alliance

It’s been an exciting few years for Rethreaded and its indefatigable leader, Kristin Keen.

Rethreaded offers survivors of human trafficking a safe, supportive work environment where they can earn money while learning a skill and experiencing continued healing through community.

In 2021, Rethreaded burst forth from its modest roots off Beaver Street and moved into the Delores Barr Weaver Campus of Hope, opening a world of possibilities for the survivors and the treasured community business.

The Community Foundation has supported Rethreaded since its early days, when Keen was helped by TCF’s Kathleen Shaw, Senior Vice President, Program and Initiatives.

“I had never written a grant proposal before, and Kathleen came to my rescue,” Keen remembers. “Thanks to Kathleen’s help, Delores Barr Weaver took a chance on us when we were only a year and a half in, and it was her endorsement that allowed us to begin fundraising more steadily. We began to grow.”

Mrs. Weaver’s first gift funded a position at Rethreaded for three years. That hire, Jason Jones, stayed at Rethreaded and today is the President and Chief Operating Officer. A marquee investment for sure, but Keen also remembers another early gift from Mrs. Weaver’s fund that was very important.

“Air conditioning!,” she laughed. “It changed how our employees felt about coming to work. We were no longer battling the high heat and humidity, and it allowed us to stay open year-round.”

WOMEN’S GIVING ALLIANCE

Another early champion for Rethreaded was the Women’s Giving Alliance, a TCF initiative. WGA’s mission is to improve the lives of women and girls, and Rethreaded benefitted from WGA’s focus. They made a large investment in Rethreaded in 2015.

“Suddenly we had 350 women on our side,” Keen said. “I remember thinking, ‘these women are going to

change the game’ and they did. WGA has helped us grow, and they have grown along with us. They are some of my favorite people to work with on grants because they trust us.”



WGA made another large investment in Rethreaded in 2020, and chose Rethreaded’s new Delores Barr Weaver Campus of Hope to celebrate the collective giving group’s 20th anniversary in 2021.

Visit wganeff.org.



WGA leaders Mary Pietan, Sheila Collier and Barb Wenger.





Rethreaded continued

THE BIGGEST LIFT

Rethreaded had sorely outgrown its first home, and needed a larger, more productive space to realize its mission. Keen had a vision of such a facility, but had never launched a building campaign, so once again she turned to Kathleen Shaw for guidance.

"Kathleen is so calm, so steady and so wise," she noted. "She walks me through things. She has just been steady, steady, steady for me. She's as much a part of Rethreaded as anyone else."

The building campaign took off when the Delores Barr Weaver Legacy Fund offered a **\$600,000** challenge grant toward the purchase of a property in the Talleyrand area; Rethreaded was required to raise an additional **\$900,000** to unlock the matching funds. Keen and her team were able to fulfill the challenge, and the Delores Barr Weaver Campus of Hope was opened in 2021. The new building, with its endless possibilities, was theirs.

Keen said with emotion...

"Her faith in us meant the world to us. The first time Mrs. Weaver visited us on the new campus, our ladies—who typically do not hug others—not only hugged Mrs. Weaver but came back to hug her over and over. It was so moving."

“The Community Foundation encourages the generosity of our community.”

Kristin Keen, founder and Chief Executive Officer, Rethreaded



\$1 Million+ GRANTED TO RETHREADED

since 2014 by The Community Foundation (through its Delores Barr Weaver Legacy Fund, Women's Giving Alliance, the Respond-Adapt-Recover Fund, and 22 donor-advised funds).



There's more in store for Rethreaded, which recently bought Amelia Toffee and hopes to move the confection's manufacturing on-site with the addition of an industrial kitchen. Rethreaded is also working on local housing initiatives alongside James Coggin, TCF's Senior Director, Grantmaking and Impact Investing.

Visit rethreaded.com.

FOR / **ALL**

○ WeaveTales



MORAL CAPITAL:

*The Community Foundation **takes a stand** on issues by highlighting community needs and uplifting the nonprofits that work to address them.*



THE POWER OF STORYTELLING

“In a blink of an eye, we went from a financially stable, happy family—TO REFUGEES.”

Basma Alawee, executive director and co-founder of WeaveTales (pictured left)

Many (or most) Americans descend from immigrants.

But being a refugee—one who has fled his or her homeland—is a more complicated experience. Even though Jacksonville is a primary hub for refugees entering Florida through the U.S. Department of State, there is still widespread misunderstanding about refugees.

ENTER WEAVERTALES.

Led by Basma Alawee, WeaveTales uses the profound experience of storytelling by individual refugees to change people’s perceptions. Alawee, an engineer by trade, came to the United States from Iraq in 2010 following threats to her family because of her husband’s work with the U.S. military. Upon arrival, she was shocked to hear some residents’ rude and offensive comments about her appearance as a traditional Muslim woman, especially after her family sacrificed so much to support the US. But that experience sparked her desire to be a champion for other refugees. She learned that

when she had the opportunity to tell her story, most people began to understand and sympathize with her. As she met other refugees and heard their stories, she realized that storytelling has power.

Begun in 2019, WeaveTales has helped more than 300 refugees tell their stories. Each storyteller brings the audience along on a personal journey as they recount how they were forcibly displaced from their homeland. They talk candidly about how they ended up in Jacksonville, what their lives have been like, and how they hope to contribute to the community.

“There’s a huge amount of forced displacement in the world—over 100 million, according to a report from the United Nations High Commissioner for Refugees—and it’s so important to understand the root causes of migration,” noted Alawee. *“That’s why we need to educate our community and advocate for policies that are inclusive. Understanding how and why people become refugees can help do that.”*

While WeaveTales is only a few years old, this volunteer-led nonprofit has been expanding its reach. In 2020, they created the New American Speakers Program, and three cohorts of storytellers are now able to go out in the community. WeaveTales expects to start two additional cohorts of speakers in 2023. The nonprofit is also finding new ways to spread its message – including a redesigned (weavetales.org) website and a ‘Journey to Jacksonville’ art exhibit which has traveled to several locations, bringing the refugee experience into cultural spaces. WeaveTales was also featured at a recent Donors Forum of Northeast Florida presentation on the issue of local refugee resettlement, which was well-received.

“When examining Refugee Resettlement efforts across the First Coast, who better to illuminate the opportunity and challenges of the global bureaucracy than those who have first-hand experience,” noted Tom Caron, Vice President, Donor Services. *“As Basma makes clear, it is critical to center refugee voices in any conversation regarding immigration.”*

WeaveTales continued

Now WeaveTales hopes to provide workforce solutions by helping to close the gap between refugees and businesses. The Community Foundation made a \$25,000 grant to WeaveTales in 2022 to implement Diversity, Equity, Inclusion and Belonging workshops in the community to help create a more welcoming workforce environment. Often, refugees are going to work for small businesses who desperately need employees, but the proprietors don't have the resources, training or bandwidth needed to help the refugee succeed. These workshops, along with other data-driven, field-tested solutions, could be a win-win proposition for the refugees and the employer.

Although far from her engineering career, Alawee has embraced her new role as a nonprofit leader and a rising star in the immigrant and refugee rights movement. She's come a long way from her earliest days, when she worked with Kathleen Shaw, Senior VP, Program and Initiatives, to understand how to strengthen grant applications and work with funders.

Today, her passionate storytelling is bringing the refugee-focused experience to a wider audience. She appeared on 2022 TEDx Jacksonville, and has advocated for refugee inclusion in front of the United Nations High Commissioner for Refugees. She is currently the director for external affairs at the Community Sponsorship Hub, which seeks to grow the role of communities in the protection, resettlement, and integration of refugees and other forcibly displaced people.

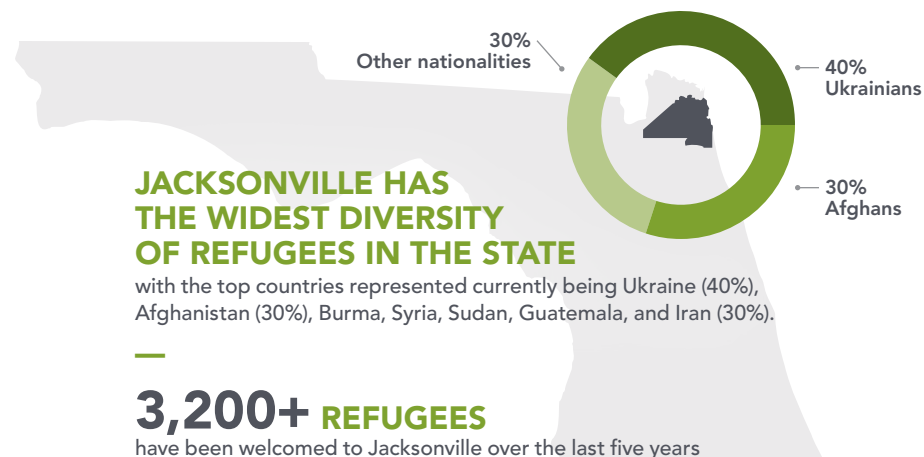
Basma Alawee only asks for one thing:

"Listen to us. Recognize the humanity, the potential and the value of everyone, including refugees like me."

Visit weavetales.org.



Top: Basma Alawee, third from right, spoke at a 2023 Donors Forum on Refugee Resettlement. In November 2022, WeaveTales attended the #NewAmericanVoter campaign event, 'Party to the Polls' (pictured above) in Jacksonville to encourage newly naturalized citizens to vote in the upcoming midterm election.





“When you believe in your story, if you have the confidence to tell it to the world, you create a better leader within you.” Basma Alawee, WeaveTales



- o **Tina Pham:**
Finding Success Beyond Self

“I truly appreciate and believe in the work that WeaveTales has been doing for the unknown voices of refugees and immigrants, giving us the opportunity to share how successful we have become with our lives.”

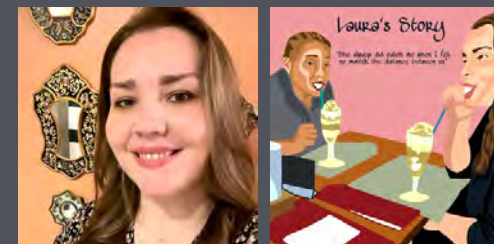
Tina Pham is the owner of Golden Pen Realty, the first brokerage owned and operated by a Vietnamese-American woman in Jacksonville and Northeast Florida.



- o **Sel Buyuksarac**
Miracles made possible through education

“Inspired by my time in the Philippines, I wanted to open a school in Jacksonville. Specifically, I wanted to open a charter school focused on STEM studies (Science, Technology, Engineering and Mathematics). People thought I was crazy. I didn’t have much myself, how could I dream of starting a school?”

Growing up in Turkey, both parents teachers, Sel Buyuksarac had a passion for education. In 2007, it led him to opening the River City Science Academy. It’s the first charter school in Duval County to earn an A-grade from the Department of Education.

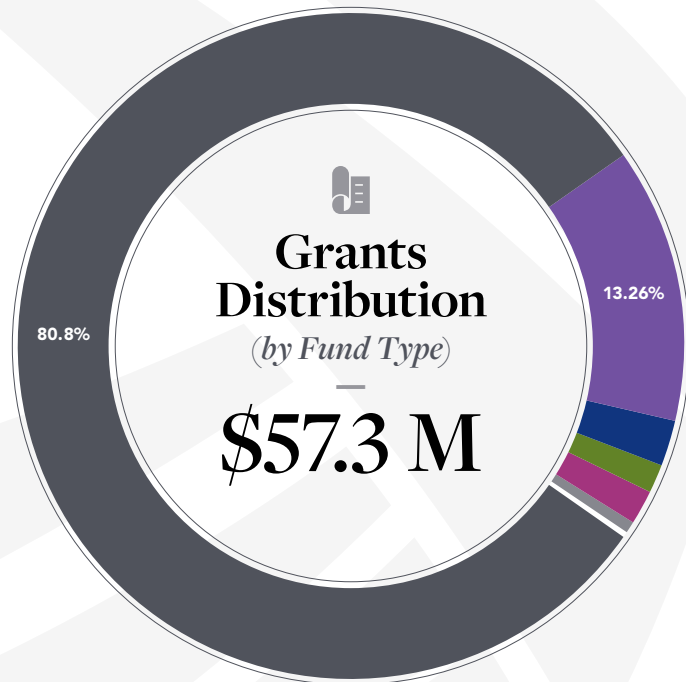


- o **Laura Gonzales:**
“We’re Moving to Disney World!”

“We were all adjusting to life in America. I spent months in school not uttering a single word so my peers wouldn’t notice my accent. My mom went from teaching children, a job she loved dearly, to making cheeseburgers. But, the sacrifice was worth it; we made it to America, we had a house, and she was with her children. What else could she ask for?”

Our immigrant stories are not just tales of a past left behind—they are stories we carry in our veins, in our hearts, and in our memories, shaping who we are and the spaces we inhabit. What else could I ask for?”

GRANTS BY THE NUMBERS




2,957

OF GRANTS MADE


1,211

GRANTEES



THE COMMUNITY
FOUNDATION
FOR NORTHEAST FLORIDA

Giving Back. Giving Forward.

ADVISED: \$46.3 M | 80.8%

A charitable account which allows individuals or families to recommend grants to the nonprofit organizations, schools & religious institutions of their choosing.

ORGANIZATIONAL & DESIGNATED ENDOWMENTS: \$7.6 M | 13.26%

Support a specific non-profit organization, school or religious institution in perpetuity. Individuals or the nonprofit itself may establish this fund.

UNRESTRICTED: \$1.2 M | 2.09%

The Community Foundation's leadership determines where the community's needs are greatest, and concentrates resources to fulfill that effort.

FIELD OF INTEREST: \$0.8 M | 1.4%

Targets the needs in a specific area of community life, and entrusts The Community Foundation with the responsibility of selecting grant recipients.

COLLECTIVE GIVING: \$1.0 M | 1.75%

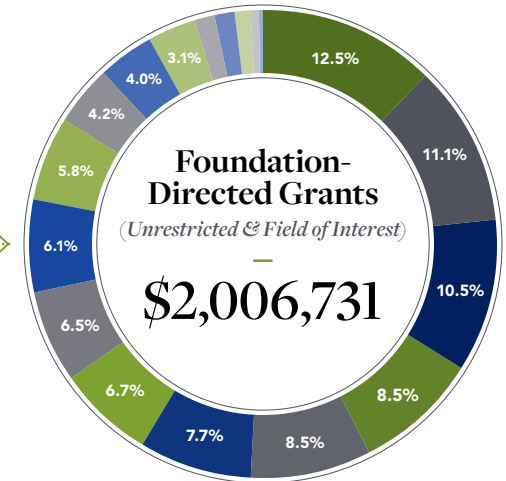
Like-minded people pool their resources and decide collectively where, when and how to award grants. Giving as a group, donors are able to achieve a greater impact than they might alone.

AWARDS & SCHOLARSHIP: \$0.3 M | .52%

Help current & future students pursue education, professional development or other educational enrichment opportunities.

SUWANNEE VALLEY: \$0.1 M | .17%

An affiliate fund of The Community Foundation for Northeast Florida, comprised of Columbia, Hamilton, Lafayette, Suwannee & Union counties. It is governed by a local advisory board.



\$250,000	12.5%	Health
\$223,065	11.1%	Children & Youth
\$210,550	10.5%	Aging Adults
\$170,500	8.5%	Supporting Neighborhoods
\$170,000	8.5%	Poverty
\$155,000	7.7%	Hunger
\$135,100	6.7%	Women & Girls
\$129,750	6.5%	Arts
\$123,000	6.1%	Racial Equity
\$117,250	5.8%	Nonprofit Capacity Building
\$85,000	4.2%	Homelessness
\$81,000	4.0%	Education
\$62,750	3.1%	Differently Aabled
\$30,000	1.5%	Animal Welfare
\$27,500	1.4%	Philanthropic Leadership
\$25,500	1.2%	Veterans
\$10,000	0.5%	Environment
\$1,266	0.1%	LGBTQ Community



For the full list of
2022 Foundation-directed
grants, scan the QR code.



o **Collective Giving:**
A powerful vehicle of philanthropy with astonishing results for Northeast Florida

When civic-minded donors come together with a passion for putting their assets into action, something extraordinary happens: **THE WHOLE BECOMES FAR MORE THAN THE SUM OF ITS PARTS.**

Collective giving can make a larger financial impact and creates momentum that is more difficult to achieve with a single gift.

In 2022, TCF's collective giving circles made more than \$1 million helping women and girls, LGBTQ families, elders and youth, and underserved residents at the Beaches.



\$660,000	64.3%	Women's Giving Alliance
\$263,250	25.6%	Beaches Community Fund
\$103,175	10.1%	LGBTQ Community Fund for Northeast Florida



The Women's Giving Alliance, an initiative of The Community Foundation, has raised and distributed more than \$8.3 million to support women and girls in Northeast Florida with a membership of approximately 450 women. They have also created an endowment of nearly \$5 million to ensure this work goes on in perpetuity. For more information, go to wganeff.org.



The Beaches Community Fund, which collectively pools investments by three dozen Beaches-area families, made more than \$260,000 in grants in 2022. A total of \$1.8 million has been granted since the Beaches Community Fund formed in 2015. For more information, go to jaxcf.org/beaches-community-fund.



The **LGBTQ Community Fund for Northeast Florida** has made close to \$1 million in grants since 2014, including more than \$87,000 in grants in 2022. This year, the Fund's advisory committee and Foundation staff decided to evolve into an endowed field of interest fund, in order to maximize funds available for grantmaking and to focus on building the endowment through legacy gifts. For more information, go to jaxcf.org/lgbtq.



The **A.L. Lewis Black Opportunity & Impact Fund** is a collective giving circle that works to advance equity and justice by making strategic investments in Jacksonville's Black community in the areas of education, economic development and healthcare. Grantmaking is expected to begin in the near future. For more information, go to jaxcf.org/al-lewis.



THE COMMUNITY FOUNDATION'S 2022

LEGACY SOCIETY MEMBERS

The Power of Giving Forward is personified in those noble donors who have established endowed funds and/or included The Community Foundation in their estate plans.

Their desire to improve and enhance their communities, even after they are gone, represents the ultimate expression of philanthropic purpose. We are honored to work with these donors, their professional advisors and their heirs to carry out their wishes. The following is a list of living donors who have The Community Foundation in their estate plans.

Funds created upon the death of the donors are listed in the funds list.

Sybil B. Ansbacher
Jill Arnold
Adrienne A. Arnone
The Arthur Vining Davis Foundations
Bailys Rein Families
Martha Frye Baker
Tim & Karen Baughman
Eli & Martha Bekkum
Rhonda Benizzi
Matthew & Michelle Birt
Arthur R. & Marvis Anne Bocchieri
Jordan Bock
Gerald F. & Susan J. Bott
Mary & Bruce Bower
Steven J. & Joy R. Boyne
Caroline Brinton
Leslie W. Brotman
J. F. Bryan, IV
Pat E. Burke
Sandra S. Burnaman
James & Mary Burt
Mary F. Carter
Gary & Nancy Chartrand
Cynthia Chomiak
Edward & MaryAnne Cipperly
Dale L. Clifford
Bryan & Kim Clontz
Howard C. Coker
Sandy L. Cook
Stephanie Cost
Janet Cote-Merow
Claudia C. Crawford
Agnes E. Danciger
Robert D. & Isabelle T. Davis
Stephen E. & Suzanne C. Day
Joyce Greenfield DeVille
Lory C. Doolittle
George & Dottie Dorion
Barbara J. Drake
Helga Dube

DuBow Family Foundation
Michael & Helen DuBow
Susan E. DuBow
Matthew E. & Susan Datz Edelman
Dan & Cindy Edelman
Peter Elsaesser
Shelagh Engstrom
Pam A. Field
Michael & Linda Fisher
Alan R. Foster & Kaye Lawson
Betty Francis & Ray Walshe
Patricia S. Freeman
Cherry Gallagher
Jo Gallagher
Crystal L. Ganpath-Freed
Kevin T. Gay
Nat & Doris Glover
Suzanne Gatling Godwin, MD
Gordon Goede
Susan Golden
Doris Goldstein
Margaret Gomez
Susan Goodall
Linda M. Gordon
Melvin & Debbie Gottlieb
Alex Graham
Dr. Regina A. Greenwood
Mattox S. Hair
Laurence & Carol Hall
Margaret Carolyn Hall
Barbara H. Harrell
Barbara S. Haugen
Cris P. Hayes
John T. Hayt
Janet S. Healy
Amy Heiman
Lindsay D. Helms
David C. & Cara Hodges
Robert & Wendy Hogan
John & McGlade Holloway

Bruce & Judy Homeyer
Patricia G. Horowitz
Linda L. Hossenlopp
Patricia Howell
David S. Hoyte
Marie L. Inge
William O. Inman, III
Rebecca B. Johnson
Martha A. Jones
Nancy M. Jones
Hugh H. & Jacqueline C. Jones, Jr.
Charles M. Keller & Laura T. Quinn
Morton & Delores Kesler
James V. & Susan Knutzen
Richard A. & Becky L. Kocerha
Blanche & Steven Koegler
Aaron Burton & Mary Lou W. Krosnick
Jean C. Krueger
Anthony S. & Virginia Y. Kurlas
Edward W. & Helen M. Lane
Kathleen Langford
Joseph V. & Victoria Lauricella
Alan R. Foster & Kaye Lawson
Laura Lee
Sally B. Lee
Allen & Sharon Lennon
Ilene S. Levenson
Mary M. Lever
Gary & Susan Lewis
Paula L. Liang
Kate M. Ligare
Rutledge Liles
Hal L. Lynch, Jr.
Wilford C. & Eleanor P. Lyon
Robert F. MacSwain
Eugene W. Majewski
Edwin & Elizabeth Malesky
Amy Margerum Berg
W. Gary McCalla
Frances McCurry

Edgar W. McCurry, III
Delia H. McGehee, II
Scott L. McGehee
William H. & Theresa C. Merriam
John & Anita Mitchell
Helen Morse
Linda Crank Moseley
Mark & Judy Mullins
Robert & Barbara Nellson
Joan W. Newton
Robert Nickerson & Indu Sapra
Duane & Susan Ottenstroer
Nancy J. Overton
C. Ken & Shirley N. Owens
Sallyn Pajcic
John R. & Jane K. Parkyn
Maureen Kingsley Paschke
John S. Peyton
Julia & Charles Pickren
Mary F. Pietan
Kelly L. Pietan
Susan E. Pope
Lynne Stephenson Raiser
John G. Reed, Jr.
Stephanie L. Reeder, DMD
Susan Remmer Ryzewic
Barbara Lane Resnick
Charles A. & Laura L. Rickman
J. Stephen & Dorothy J. Risley
Susan Lutton Rodgers
Kenneth & Gail Rowles
Paul & Mary Jo Tlsty-Rushton
Kim Rutkowski
Frederick W. & Susan West Schantz
William & Peggy Corbin Scheu
Peggy Schiffrers
Robert & Judy Schnitzer
Ryan A. Schwartz
Lorette D. Seaton
Benjamin A. & Melanie Setzer

Ina Richter Shainbrown
A.L. & Ruth Shantz
Helen E. Short
Melissa Shrader
Laine S. Silverfield
David A. & Linda B. Stein
Fiona L. Strathern
Constance Stumin
James S. & Nancy B. Taylor
Josephine Taylor
Julia W. Taylor
Fredric & Janice Teich
Marion Tischler
Larry & Monica Tremonti
W. Glenn Turner
John D. & Mary Jane Uible
Jim & Joan Amery Van Vleck
W. Lester & Marjorie Varn
Brenda B. Verbeck
Drenda Vijuk
Dori C. Walton
Linda W. Watkins
Carole A. Watson
Jane Watts
J. Wayne & Delores Barr Weaver
Joel & Patricia Weiss
Elaine T. Weistock
Carol J. Weldon
Klaus & Barbara C. Wenger
Tracey Westbrook
Skip & Margaret Wiegand
Linda F. Wilkinson
Arthur L. Williams
Courtenay S. Wilson
Ellen Wiss
Bernard R. & Gail Yvon
Anonymous – 9



◦ A Legacy of Love for the Performing Arts: *Eli & Martha Bekkum*

Eli and Martha Bekkum fell in love thanks to the theater, and the theater now has them to thank.

In 1974, Martha was involved in productions at Players by the Sea when some theater friends set them up on a date. Eli had just moved to Jacksonville, bought a new Volkswagen van, and became a roommate of one of her friends.

Fifty years later, the Bekkums' love of the performing arts, visual arts, and live theater has been a hallmark of their lives. The Doctors Inlet residents have seen performances in cities across the country, including many trips to Broadway, and supported the arts locally. They have volunteered with the Museum of Contemporary Art Jacksonville and with the FSCJ Artist Series as their Head Volunteers for 30 years. They have volunteered with and served on the Boards of the Half Shell Repertory Theatre in Southern Maryland, The Osher Lifelong Learning Institute at UNF, The Jacksonville Arboretum and Gardens, The University Club of Jacksonville, the Five & Dime, a Theatre Company, and of course, Players by the Sea.

“Every live performance you ever see is always a unique, once-in-a-lifetime opportunity. It’s never the same and can never be duplicated.” Martha Bekkum

“After we saw their production, I wrote a note to our financial advisor telling him that was the best investment we ever made.”

Martha Bekkum



Through the years, they saw their retirement savings grow.

They took advantage of a generous 401(k) match through Eli's 38-year career as an Engineering Manager at The Boeing Company, where Eli drove his beloved VW van every day to work in rain, sleet, snow and heat.

When Eli's sisters were diagnosed with Alzheimer's, the Bekkums started to make their estate plans. They knew of The Community Foundation through news about Delores Barr Weaver's philanthropy. With the help of John Zell, Vice President of Development, they set up an endowed field of interest fund to support the performing arts in Northeast Florida in perpetuity, created from their savings at the time of their deaths.

Through the process of planning their legacy, they've also come to experience the joy of giving now. They have loved learning about community issues at Donors Forum and meeting other donors in The Community Foundation network. In fact, they recently put the VW Van in a car show organized by two fellow fundholders at The Community Foundation, Matthew and Michelle Birt, for their scholarship fund which honors their son, Talen.

When they recently had to withdraw required minimum distributions from their IRA, they underwrote the theater program at the North Florida School of Special Education. They walked away from the students' performance profoundly moved.

THANK YOU TO OUR PROFESSIONAL ADVISOR PARTNERS

Professional advisors play an important role in advising clients on their estate plans and charitable giving.

We are grateful to all the professional advisors—estate attorneys, CPAs and wealth advisors—who referred individuals and families to The Community Foundation this year, in order to further their clients' financial and philanthropic objectives.



“There’s no doubt our biggest impact has been on education and mental health, but I also feel that all giving means something. I have always said to our kids, you can change just one person’s life, and think how it grows into a ripple effect. Lately, I have really been getting joy out of seeing other people have joy. How does it get any better than that?”

Nancy Chartrand, fundholder

684 FUNDS

AT THE COMMUNITY FOUNDATION IN 2022

o Unrestricted Funds

Allow The Community Foundation leadership to determine where the community’s needs are greatest, and to concentrate resources to fulfill that effort.

Lois & Donald Cottrell Endowment Fund	1982
A.D. Davis Family Advised Fund - Lee Davis	1994
The Community Endowment Fund	2005
First Guaranty Bank & Trust Company Endowment	1991
Bernard V. Gregory Endowment Fund	1997
Independent Life Insurance Company Endowment	1995
Brady S. Johnston Charitable Fund	1987
Kathryn & Richard Kip Endowment Fund	1997
Thomas M. Kirbo & Irene B. Kirbo Charitable Trust	1990
Nancy Hazard McCreight Memorial Fund	1982
Frank & Ann McGehee Endowment	1997
Grady C. & Rebecca T. Parker Endowment	2015
Marian J. & Gordon A. Roberts Fund	2005
Kathy Rude Charitable Fund	1983
Norwood H. & Mary Elizabeth Sandifer Endowment Fund	1986
Harold K. Smith Charitable Fund	1997
Jay & Deanie Stein Unrestricted Fund	2011
John D. & Mary Jane Uible Endowment	1991
Venture Philanthropy Endowment Fund	1990
Arthur L., Jr. & Angela H. Williams Fund	1993
Anonymous	2016

o Field of Interest Funds

Target the needs in a specific area of community life, and entrusts The Community Foundation with the responsibility of selecting grant recipients.

Aging Adults

I. R. Bowen & Katherine H. Bowen Fund	2003
Grace H. Osborn Endowment	1994
J. Wayne & Delores Barr Weaver Senior to Senior Endowment	2009

Animal Welfare

Jeffrey Edgar Endowment	2019
-------------------------	------

The Arts

Art Ventures Endowment Fund	1990
Ann McDonald Baker Art Ventures Award Fund	2014

J. Shepard, Jr. & Mary Ann Bryan Arts Endowment	2000
Dr. JoAnn Crisp-Ellert Fund	2007
Independent Life Minority Arts Award Fund	1992
Anne & Sallyn Pajcic Art Ventures Endowment	2011
Alynn Sharp Art Fund	2012
Delores Barr Weaver Black Artists Endowment	2020

Children

Jacksonville Children’s Endowment	1993
-----------------------------------	------

Disaster Relief

The Community Disaster Relief Fund	2016
Respond/Adapt/Recover Fund	2020

Education

Peyton Early Literacy Endowment	2007
Quality Education for All Endowment Fund	2013

Environment

Northeast Florida Environmental Conservation Fund	2022
--	-------------

Health

Kenneth H. Millar, Jr. Memorial Fund	1993
Byon Morris Charitable Fund	1992
Esther Pope Memorial Endowment	1989

Indigent

Donald & Terri McIntire Fund	2006
Simon J. Peabody Fund	1997
Robert T. & Carol R. Shircliff Discretionary Grantmaking	1988

LGBTQ

Chartrand Family LGBTQ Endowment Fund	2018
LGBTQ Community Endowment Fund	2018

Local Investment

J. Wayne & Delores Barr Weaver Local Capital Legacy Fund	2021
J. Wayne & Delores Barr Weaver Local Capital Endowed Legacy Fund	2021
The Community Foundation Local Capital Fund	2021

Neighborhood

Bank of America Neighborhood Endowment Fund	1999
Jacksonville Neighborhood Endowment Fund	1998

Nonprofit Capacity/Grassroots Organizations

Jessie Ball duPont Reflective Practice Endowment Fund	2007
Delores Barr Weaver Grassroots Grants Endowment	2020



FIELD OF INTEREST FUNDS

Field of interest funds are created by generous donors for a particular topic or subject area, but they want The Community Foundation to decide which agencies will best serve their purpose.

One new field of interest was created in 2022—the **Northeast Florida Environmental Conservation Fund**, a non-endowed field of interest with an advisory committee that receives environmental crime

settlement funds. In addition, the **LGBTQ Community Fund** evolved from a collective giving circle into an endowed field of interest fund, benefiting the LGBTQ community in Northeast Florida in perpetuity.

For more information about establishing a field of interest, please contact **John Zell**, jzell@jaxcf.org or (904) 356-4483.



Putnam County

Frank V. Oliver, Jr. Endowment 2010

Refugee Resettlement

Afghan Refugee Support Fund 2021

Women & Girls

Women's Endowment Fund 2001

Organizational & Designated Endowments

Support a specific nonprofit organization, school or religious institution in perpetuity. Individuals or the nonprofit itself may establish this fund.

Organizational Endowments

100 Black Men of Jax. Bernard V. Gregory – Scholarship Fund 1997
 Amelia Island Chamber Music Festival Endowment 2018
 Angelwood Endowment 2019
 The Arc Jacksonville Endowment 2003
 Attending Staff Foundation Endowment Fund 1990
 Barnabas Center Endowment 1989
 BEAM Endowment 2020
 Christy Birong Youth Leadership Jacksonville Endowment 1990
 Boys & Girls Club of Northeast Florida Endowment 1991
 The Bridge of Northeast Florida, Inc. Endowment Fund 1998
 The Cultural Council of Greater Jacksonville Endowment Fund 1999
 Douglas Anderson School of the Arts Endowment 1989
 Feeding Northeast Florida Endowment 2019
 Florida Council on Economic Education Jacksonville Endowment 2009
 Florida Theatre General Endowment Fund 1999
 Florida Theatre Preservation Fund 1993
Carol Johnson Foley President & CEO Endowment 2022
 GOLF Scholarship Endowment 2021
 Gateway Girl Scout Council Endowment Fund 1996
 Girls Incorporated of Jacksonville Endowment Fund 2019
 Hugh & Susan Greene Endowment for Cathedral Arts Project 2016
 Greenscape of Jacksonville, Inc. Endowment Fund 1992
 Elizabeth Edgar Hall Endowment 2015
 Florida Rugby Endowment 2021

HandsOn Jacksonville, Inc. Training & Education Fund 1990
 The Heal Foundation Endowment 2015
 INK's Make Your Mark Endowment 2017
 J.F. Bryan, IV Community Development Award Fund 2021
 Jacksonville Public Education Fund Endowment 1991
 Jacksonville Symphony Association Endowment Fund 2009
 Jacksonville Volunteer Lifesaving Corps Second Century Fund 2013
 JAGA Charitable Trust Endowment 2014
 Junior League of Jacksonville, Inc. Endowment 1997
 Kappa Alpha Psi Foundation, Inc. Endowment 2021
 The L.S.S. Endowment Trust 1989
 MaliVai Washington Youth Foundation Endowment 2021
 Memorial Park Association Endowment 2021
 Ralph & Elizabeth Mundell Endowment 2007
 Museum of Science & History of Jacksonville General Endowment 1994
 Nonprofit Center of Northeast Florida Endowment 2010
 North Florida School of Special Education Endowment 2021
 Pine Castle Endowment 1990
 Planned Parenthood of S, E, N Fla in Support of Men's Health 2011
 Planned Parenthood of S, E & N. Fla. – End IMO Dr. D. Carson 2000
St Johns County Council on Aging Endowment 2022
 St. Johns River Legacy Endowment 2012
 St. Vincent's Medical Center Endowment 1989
 Barton Suter Family Endowment for Angelwood 2018
 Theatre Jacksonville Operating Endowment Fund 2016
 Tree Hill Endowment 1991
 United Way of Northeast Florida, Inc. Endowment Fund 1991
 Very Special Arts Florida-Jacksonville Fund 1994
 Voices for Children Endowment 2007
 Women's Club of Jacksonville Endowment 2015
 World Affairs Council – Jacksonville Endowment 2014

Designated Endowments

American Indian College Fund 2020
 Sybil Barnett Ansbacher Women's Giving Alliance Endowment 2011
 Jill Arnold Women's Giving Alliance Endowment 2016
 Arc Village Endowment Fund 2014
 Christie Atkerson Fund for Jacksonville State University 2021
 Ann McDonald Baker Women's Giving Alliance Endowment 2010

Martha Frye Baker Women's Giving Alliance Endowment 2014
 Sally Baker Lee Women's Giving Alliance Endowment 2017
 Frank Barker Memorial Fund 2011
 Barnabas Endowment Fund 2013
 Wanda J. Lanier Endowment for the benefit of Barnabas Center 2021
 Claudia Adams Barr Endowment 2014
 BASCA Facilities Endowment 2020
 Beavers/Burt Endowment Fund 1998
 Amy Margerum Berg Women's Giving Alliance Endowment 2016
 Kitty R. Berry Memorial Fund 1991
 Betty Griffin House Endowment 2007
 Blanchart Family Endowment Fund 2011
 Blanchart Family Endowment Fund for L'Arche Harbor House 2011
 Mary & Bruce Bower Alexis de Tocqueville Endowment 2000
 The Brain Tumor Network Designated Fund 2018
Caroline O. Brinton Women's Giving Alliance Endowment 2022
 Leslie W. Brotman Women's Giving Alliance Endowment 2020
 G. Howard Bryan Endowment Fund 2006
 Shep & Mary Ann Bryan Endowment / Daughters of Charity 1999
 Shep & Mary Ann Bryan WJCT Endowment Fund 2001
 Patricia E. Burke Women's Giving Alliance Endowment 2015
 Sandra Burnaman Women's Giving Alliance Endowment 2014
 Camp Boggy Creek Campership Fund 2014
 Lillian I. Cannon Endowment for The Bridge 2010
 Mary F. Carter Women's Giving Alliance Endowment 2015
 Cathedral Arts Project Endowment 2013
 Nancy Chartrand Women's Giving Alliance Endowment 2010
 Cynthia Chomiak Women's Giving Alliance Endowment 2017
 Citizens for a Scenic Florida Endowment Fund 1999
 Dale Lothrop Clifford Women's Giving Alliance Endowment 2015
 W. Earle & Phyllis Collins Crank Memorial Endowment 1995
 Community Hospice Patient Care Endowment 2007
 Comunita Cenacolo America Endowment 2007
 Continental Societies Inc., Jacksonville, FL Chapter Endowment Fund 2006
 Sandra L. Cook Women's Giving Alliance Endowment 2016
 Jackie Cornelius Artist in Residence Fund 2017
 Stephanie Cost Women's Giving Alliance Endowment 2014
 Cummer Museum Art Connections Endowment 2015
 Agnes E. Danciger Women's Giving Alliance Endowment 2021
Arthur Vining Davis Foundation's Women's Giving Alliance Endowment 2022
 Robert D. Davis Family Endowment 2009
 The DESC Endowment 2014
 Lory Doolittle Women's Giving Alliance Endowment 2017
 Dorothy S. Dorion Women's Giving Alliance Endowment 2013
 Douglas Anderson School of the Arts Fellowship Endowment 2007
 Barbara J. Drake Fund for JASMYN 2019
 Barbara J. Drake Women's Giving Alliance Endowment 2011
 Dreams Come True Client Dreams Endowment 2007
 Dreams Come True Endowment Fund 1992



Catherine M. Drompp Women's Giving Alliance Endowment	2018
The Cindy Edelman Excellence in Teaching Fellowship Fund	2017
Cynthia G. Edelman Women's Giving Alliance Endowment	2013
Pam A. Field Women's Giving Alliance Endowment	2018
Betty L. Francis Women's Giving Alliance Endowment	2019
Crystal L. Freed Women's Giving Alliance Endowment	2015
Patricia S. Freeman Women's Giving Alliance Endowment	2022
Gateway Community Services Expansion Fund	2020
Gateway Community Services Transitional Housing Endowment	2007
Kevin Gay-Operation New Hope Legacy Endowment Fund	2022
Dr. Maurice H. Givens & Dr. David E. Rogers Fund	1992
Doris Sussman Goldstein Women's Giving Alliance Endowment	2012
Margaret Gomez Women's Giving Alliance Endowment	2012
Susan Goodall Women's Giving Alliance Endowment	2022
R.E. & J.M. Gray Fund	2000
Joyce Greenfield DeVillez Women's Giving Alliance Endowment	2020
Greenwood School Endowment Fund	2005
Martha Hammock Fund	2020
Barbara Hicklin Harrell Women's Giving Alliance Endowment	2010
Barbara S. Haugen Women's Giving Alliance Endowment	2022
Cris Hayes Women's Giving Alliance Endowment	2014
Janet S. Healy Women's Giving Alliance Endowment	2013
James Hehn Memorial Endowment Fund	2009
Lindsay D. Helms Women's Giving Alliance Endowment	2012
M. Clare Herald Endowment Fund	2010
David M. & Ann C. Hicks Tocqueville Endowment	2008
Hope Haven Client Scholarship Endowment	2007
Marshall Horowitz Memorial Fund	1992
Linda L. Hossenlopp Women's Giving Alliance Endowment	2014
Hubbard House Endowment	2007
Hubbard House Endowment Fund	1990
Jacksonville Children's Chorus Chorister Scholarship Endowment	2007
Jacksonville Health Education Program Borland Library Fund	2012
The Jacksonville Symphony Endowment	1992

AGENCY ENDOWMENTS

The Community Foundation is the home to many Agency Endowments—special designated funds in which a source of perpetual funding is established to benefit a specific organization. We were honored to add one new agency endowment to our roster in 2022. The **Carol Johnson Foley President and CEO Endowment** benefits the Cathedral Arts Project.

For more information about establishing an agency endowment, please contact John Zell, zell@jaxcf.org or (904) 356-4483.



JASMYN Campus Park Endowment	2020
Jewish Community Alliance Endowment	1995
Jewish Family & Community Services Endowment	2007
Rebecca B. Johnson Women's Giving Alliance Endowment	2018
Martha A. Jones Women's Giving Alliance Endowment	2015
Nancy M. Jones Women's Giving Alliance Endowment	2021
K9s for Warriors Endowment	2020
Albert & Viola Kissling Endowment Fund	1990
Valdemar Joost Kroier Endowment Fund	1986
Valdemar Joost Kroier Endowment Fund II	1990
Jean Krueger Women's Giving Alliance Endowment	2020
Lamp of Jesus Endowment Fund	1979
Helen & Edward Lane Endowment Fund	1997
Helen & Edward Lane Alexis de Tocqueville Endowment Fund	2000
Helen & Edward Lane Endowment Fund II	1997
Helen & Edward Lane Endowment Fund III	1998
Helen Murchison Lane Women's Giving Alliance Endowment	2010
Kathleen Langford Women's Giving Alliance Endowment	2014
Ilene S. Levenson Women's Giving Alliance Endowment	2016
Mary M. Lever Women's Giving Alliance Endowment	2021
Paula L. Liang Women's Giving Alliance Endowment	2014
Kathleen M. Ligare Women's Giving Alliance Endowment	2019
Mary J. Lindsley Fund	1992
Eleanor & Wilford Lyon WJCT Endowment	2000
Ruth Townsend Manning & Sallie Townsend Benson Endowment Fund	1998
James L. Mathas Foundation	2011
Jane Atherton Mawdsley Fund	1992
Mayse-Turner Fund for Public Performance of Classical Music	2008
Mayse-Turner Fund for Anglican Hymnody	2008
Nancy M. McDonald Endowment	2005
Delia H. & Thomas R. McGehee Endowment Fund	1989
Scott L. McGehee Women's Giving Alliance Endowment	2021
Nadia Lamb Mead Endowment	1995
Micah's Place Endowment	2007
Sandy Miller Metrotown Programs Fund	2018
MOCA Educator for Family & Children's Programs Endowment	2015
Helen Morse Women's Giving Alliance Endowment	2021
Linda Crank Moseley Women's Giving Alliance Endowment	2021
Sherry Murray Women's Giving Alliance Endowment Fund	2010
Nassau County Council on Aging Building Fund	2014
Joan W. Newton Women's Giving Alliance Endowment	2013
Frank V. Oliver, Jr. Fund for Putnam County Bread of Life	2010
Frank V. Oliver, Jr. Fund for Putnam County Gator Club	2010
Frank V. Oliver, Jr. Fund for Putnam County Humane Society	2010
Frank V. Oliver, Jr. Fund for Rodeheaver Boys Ranch, Inc.	2010
Frank V. Oliver, Jr. Fund for St. Johns River State College	2010
Frank V. Oliver, Jr. Fund for Putnam County Elfs for Kids	2010
One Blood Designated Fund	2020
One Jax Endowment	2007
PACE Center for Girls Jacksonville Endowment	2007
Sallyn S. Pajcic Women's Giving Alliance Endowment	2015
Maureen Kingsley Paschke Women's Giving Alliance Endowment	2020
Kelly L. Pietan Women's Giving Alliance Endowment	2021
Mary F. Pietan Women's Giving Alliance Endowment	2016
Providence Music Educators Endowment	2022
Quigley House Endowment	2007
Lynne Stephenson Raiser Women's Giving Alliance Endowment	2020
Richard A. Reid / First Guaranty Memorial Fund	2002
Charles & Louise Rickman Endowment for the Salvation Army	2017
Dr. Charles A. & Dr. Louise Rickman Scholarship Fund	2017
Robert E. Lee High School Alumni Association Fund	2010
Susan Lutton Rodgers Women's Giving Alliance Endowment	2019
Ronald McDonald House Endowment	2007
Kim Rutkowski Women's Giving Alliance Endowment	2013
Susan Remmer Ryzewic Women's Giving Alliance Endowment	2010
Scenic Jacksonville Endowment to Protect & Enhance Scenic	2017
Susan West Schantz Women's Giving Alliance Endowment	2017
Peggy Schiffers Women's Giving Alliance Endowment	2017
Seaton-Donahue Education Fund	2020
A. L. & Ruth S. Shantz Trust	1981
Robert T. & Carol R. Shircliff Charitable Endowment	1988
Helen Short Women's Giving Alliance Endowment	2011
Melissa Shrader Women's Giving Alliance Endowment	2022
Laine S. Silverfield Women's Giving Alliance Endowment	2012
Ann H. Sims Women's Giving Alliance Endowment	2015
Skinner Family Designated Endowment Fund	2020
Harold K. Smith Charitable Fund for Designated Grants	2007
Harold K. Smith Playhouse Endowment	1995
The Somebody Cares Fund	2015
St. Vincent's Clay County Women & Infants Pavilion Endowment	2015
David A. Stein Arc Village Endowment	2014
Linda B. Stein Women's Giving Alliance Endowment	2013
Strategic Partnership Fund	2014
Fiona L. Strathern Women's Giving Alliance Endowment	2021
I. M. Sulzbacher Center for the Homeless Endowment	2007
I.M. & Hazel J. Sulzbacher Endowment for the I.M. Sulzbacher Center	2004
Julia Taylor Women's Giving Alliance Endowment	2010
The Community Foundation for Northeast Florida Operations Endowment	2013
Marion E. Tischler Women's Giving Alliance Endowment	2013
Sharon L. Topinka Memorial Fund	2020
John D. & Mary Jane Uible Endowment for Jacksonville Symphony	2018
John D. & Mary Jane Uible Endowment/MOSH	1998
John D. & Mary Jane Uible Endowment/Ronald McDonald House	1998
Mary Elizabeth Uible Morris Unrestricted Endowment/Bolles	2000
Joan A. Van Vleck Justice for Girls Endowment	2017
Joan Amery Van Vleck Fellowship Fund	2011
Joan Amery Van Vleck Women's Giving Alliance Endowment	2010



George Varn Endowment for the Museum of Science & History	1993
Brenda B. Verbeck Women's Giving Alliance Endowment	2021
Joe Vujuk Fund	2016
Volunteers in Medicine Endowment	2007
Dori Walton Women's Giving Alliance Endowment	2017
Linda W. Watkins Women's Giving Alliance Endowment	2021
Cornelia & Olin Watts Endowment Fund	2000
We Care Jacksonville Endowment	2007
Delores Barr Weaver Forever Event Fund est. 2015	2014
Delores Barr Weaver Habijax Tiny House Fund	2020
Delores Barr Weaver Heart & Vascular Pavilion Endowment	2021
Delores Barr Weaver Women's Giving Alliance Endowment	2011
Webb Center Endowment	1991
Isadore Weiner Diabetes Assistance Fund	2021
Elaine T. Weistock Women's Giving Alliance Endowment	2021
Carol J. Weldon Women's Giving Alliance Endowment	2015
Wells Fargo Scholarship Fund	2000
Barbara C. Wenger Women's Giving Alliance Endowment	2015
Tracey Westbrook Women's Giving Alliance Endowment	2013
The Clara White Mission, Inc. Endowment Fund	2006
The Endowment for Clara White Mission	2007
Courtenay Sands Wilson Women's Giving Alliance Endowment	2021
Jay T. & Ruth Lucile Winn Endowment	2011
Ellen A. Wiss Women's Giving Alliance Endowment	2015
The Endowment for WJCT	2007
WJCT Lifelong Learning Legacy Endowment	2016
Women's Center of Jacksonville Endowment	2007
Anonymous	2017
Anonymous	2017

o Advised Funds

Create a charitable account which allows individuals or families to recommend grants to the nonprofit organizations, schools and religious institutions of their choosing.

Abdullah Family Endowment	2014
Abdullah Family Foundation Fund	2014
Abram Family Fund	2017
Norm & Ann Anderson Family Fund	2013
G. Turner Ashby Memorial Fund	2006
Atkerson Family Fund	2001
The Azalea Fund	2007
Andy & Leah Baggs Family Fund	2022
Tristyn Bailey Memorial Fund	2021
Bailys/Rein Family Charitable Fund	2005
Baker Family Advised Fund	2014
Ann McDonald Baker Family Foundation	2003
Anne & John Baker Family Fund	2016
Ken & Fran Baker Charitable Fund	2021

Martha & Tom Baker Family Fund	2013
Robert B. Baker Advised Fund	2016
Ball Family Fund	1998
Christopher & Elizabeth Ball Advised Fund	2008
Hilton & Butler Ball Charitable Fund	2008
Sarah Ball Advised Fund	2009
Norma S. & Hayes Basford Advised Fund	1998
L. Andrew & Janie S. Bell Fund	1995
Bitterli Charitable Fund	2018
Blaudow Family Fund	2016
Bobby & Polly Family Fund	2021
Missy & Roland Boney Family Fund	2015
Buford L. Bowen Charitable Fund	2013
Mary & Bruce Bower Advised Fund	2019
Miller Bower Family Trust	1997
Doug & Kimberly Brady Family Fund	2021
Barbara & Michael Bredehoeft Fund	2022
Caroline O. Brinton Charitable Fund	2016
Caroline O. Brinton Family Endowment	2008
William D. & Catherine O. Brinton Advised Fund	1997
Leslie & Sol Brotman Fund	2001
J.F. Bryan, IV Fund	1996
J.F. Bryan, IV Endowment Fund	1995
Tom Bush Family Foundation Fund	2021
Hugh & Caterina Caron Family Fund	2019
Doris N. Carson Foundation for Family Planning & Women's Health	1992
Jean Claude & Nicole Casavant Fund	2021
Arch W. & Lo B. Cassidy Advised Fund	1993
Cellar Family Foundation Fund	1997
The Chartrand Family Fund	2013
Gary & Nancy Chartrand Advised Fund	2013
Jeff Chartrand Advised Fund	2010
Ed & MaryAnne Cipperly Seeds of Promise Endowment & Fund	2006
Jenny Claggett Fund	2019
Ann H. & Robert M. Clements Fund	2012
Clontz Family Fund	2014
Cloud Family Amazing Fund	2018
Coastal Blood Foundation Charitable Fund	2017
Cindy Coggin Advised Fund	2022
Fran Coker Memorial Educational Fund	2009
Collins Trust Donor Advised Fund	2019
Cox Advised Fund	2019
Cunkle Family Fund	2017
Current Family Advised Fund	2013
A.D. Davis Family Advised Fund / Robert Davis	1994
David & Tammy Davis Advised Fund	2014
Florence N. Davis Family Advised Fund	1995
Robert D. Davis Family Advised Fund	2009
DHM2 Family Charitable Fund	2019

Ed & Susan Doherty Advised Fund	2012
Drake Family Advised Fund	2011
Catherine M. Drompp Charitable Fund	2018
Drummond/Falconetti Charitable Trust	2000
DuBow Family Advised Fund	1997
DuBow Family Endowed Advised Fund	2017
The Jessie Ball duPont Port St. Joe Capacity Building Fund	2007
Duval Motor Company Charitable Fund	2020
Edelman Family Advised Fund	2007
Egan Family Advised Fund	2019
Eternal Difference Foundation Fund	2008
A. Ross & Cora B. Evans Advised Fund	1998
Eveleigh Trust Fund	2003
Dr. Ronald P. Evens Fund	2003
Every Little Bit Fund	2017
Fisher Family Fund	2021
Michael W. & Linda M. Fisher Advised Fund	2003
Flagg Family Fund	2022
Flagler Family Fund	2021
Florida Blue Community Fund	2002
Ginger & Gregory Forbes Charitable Foundation Fund	2005
David & Bonnie Foster Advised Fund	2008
Frankland Family Charitable Fund	2014
FRANN Fund	2019
Ralph K. Frasier & Jeannine M. Quick-Frasier Advised Fund	2012
Meredith & Mark Frisch Advised Fund	2011
Front Porch Fund	2022
Furyk Foundation Fund	2021
Geddes Family Advised Fund	2013
Gen W Now Fund	2013
Girls with Curls Fund	2019
Sheriff Nat Glover Endowment	1995
GO Initiative Fund	2018
Golden Family Fund	2019
Margaret Gomez Advised Fund	2012
The Gooding-Bell Endowment	2005
The Henry & Lucy Gooding Endowment	2004
Alex Graham Advised Endowment	2016
Alex Graham Advised Fund	2016
C & H Graham Family Fund	2013
Iva & Gene Gray Memorial Endowment	2000
Michael & Eileen Grebe Advised Fund	2016
Renee Haas & John W. Westman Charitable Fund	2004
Harbison Family Fund	2018
Danielle Hardner Advised Fund	2011
Harrell Family Fund	2017
Ann C. & Martin S. Harrell Family Fund	2017
Hugh & Glenda Harris Donor Advised Fund	2020
Preston Haskell Fund	2017
Hatcher Endowment	1991



Tracye Hawkins Advised Fund	2022	Ashley Ann McGehee Fund	2020	Deborah Hicks Quazzo Charitable Fund	2012
Jonathan & Teresa Hay Family Fund	2018	Charles C. & Scott L. McGehee Fund	2006	Rajhansa Family Benevolence Fund	2022
Christy Hayden Advised Fund	2022	Courtney L. McGehee Charitable Fund	2020	Ramsey Family Fund	2020
Robert W. & Lindsay D. Helms Advised Fund	2000	David S. McGehee Family Fund	2019	RS&H Elevate Fund	2018
Henderson & Baughman Family Fund	2019	Mac & Terri McGehee Fund	1987	RTJC Hogan Family Fund	2019
Hernon-Garro Charitable Advised Fund	2017	Mackenzie Rives McGehee Fund	2020	Lloyd & Maureen Regas Charitable Fund	2020
Reedy & Philip Hickey Advised Fund	2011	Terri Ross McGehee Fund	2022	Reinhold Family Foundation Matching Gift Program	2012
William J. Hicklin, Jr. Advised Fund	1994	Sutton & Debbie McGehee Advised Fund	2013	Remmer Ryzewic Advised Fund	2007
Hicks Family Charitable Fund	2019	Tom & Janna McNicholas Donor Advised Fund	2019	C. Daniel & Julie F. Rice Donor Advised Fund	2004
Melinda Hicks Jenkins Fund	2018	Marc & Anne Mayo Charitable Fund	2020	The Charles E. & Dianne T. Rice Family Donor Advised Fund	2008
Katherine C. Hill Fund	2017	George & Gayle Medill Family Advised Fund	2019	Scott & Heather Riley Family Fund	2020
R. Marshall Hill Fund	2017	Merrill Lynch Employees' Philanthropic Endowment	2012	Steve & Dotty Risley Foundation	1999
Robert & Margaret Hill Advised Fund	2011	Merrill Lynch Employees' Philanthropic Fund	2010	Riverside Hospital Foundation Charitable Fund	1993
Brad & Rania Hilton Charitable Fund	2018	Meyers-Labenz Family Charitable Fund	2016	Michael & Tance Roberts Advised Fund	2020
Cara & David C. Hodges, Jr. Endowed Family Fund	2017	David C. Miller Fund	2018	Charlotte Haynes Robuck Endowment Fund	1998
Bruce & Judy Homeyer Charitable Fund	2003	David & Monique Miller Family Fund	2015	The Rogaski Family Advised Fund	2011
Bruce & Judy Homeyer Fund for Excellence in Nursing	2013	Joshua Miller Philanthropic Fund	2022	Rogers Towers Charitable Fund	2004
David & Jan Howard Charitable Fund	2018	Michael & Glenn Miller Family Fund	2016	Jamie Rood Advised Fund	2019
Howell Family Endowment	2010	John & Anita Mitchell Family Fund	2017	Rosenberg Family Fund	2021
Ashton & Amanda Hudson Family Charitable Fund	2018	Jorge & Marjorie Morales Charitable Fund	2022	Liz Rosenfeld Legacy Fund	2012
Charles Hyman & Janet Healy Family Fund	1999	James & Anne Moseley Advised Fund	1999	Gregory S. & Susan K. Roth Fund	2016
Matt & Amanda Jackson Fund	2019	Gregory Mullins Advised Fund	2017	Rowe Family Charitable Fund	2014
Jacksonville Equity & Placemaking Advised Fund	2020	Jeffery Mullins Advised Fund	2017	Rueger Family Fund	2017
Jennifer's Hope Fund	2012	Mark & Judy Mullins Advised Fund	2016	San Martin Family Advised Fund	2007
Anne & Charlie Joseph Family Fund	2019	Murray Family Gift Fund	2014	Ryan A. Schwartz Advised Fund	2009
KAIROS Advised Fund	2017	MMW Fund	2019	Judith E. Score Fund	2022
Matthew & Alexis Kane Family Fund	2014	My Village Project Community Fund	2015	Henry & Betty Seissler Memorial Fund	2007
Lawrence & Kathy Kanter Advised Fund	2018	Evelyn H. Nehl Fund in Memory of John Steven (Jackson) Hughes	2000	Benjamin & Melanie Setzer Family Fund	2017
The Kausch Family Donor Advised Fund	2022	Tom Nehl Fund	1993	Debra Setzer Fund	2016
Kingdom Giving Fund	2022	Tom Nehl Truck Company Fund	2020	Setzer L'dor V'dor Fund	2017
Morton A. & Delores Kesler Foundation	1998	Neil Neighborhood House Auxiliary of St. Augustine, Florida Advised Fund	2009	Sharkey Family Fund	2016
Krosnick Family Charitable Fund	2000	Noyes Family Fund	2017	Blair Sisisky Sherman Fund	2016
Krueger Family Charitable Fund	1994	Ray O'Steen Fund	2019	Silverfield Family Fund	2012
Mr. & Mrs. Anthony S. Kurlas Family Advised Fund	2011	The Ottenstroer Charitable Trust	1993	Sisisky Family Foundation Fund	1998
Mr. & Mrs. Anthony S. Kurlas Family Endowment	2011	Duane L. Ottenstroer Charitable Fund	1994	Richard G. & Ann F. Skinner Advised Fund	1981
Henri Landwirth & Family Advised Fund	2019	Janet G. Owens Neighborhood Engagement & Community Development Memorial Fund	2020	Richard G. Skinner, Jr. & Ann F. Skinner Family Endowment Fund	2019
Henri Landwirth Family Advised Fund	2019	Jeffrey Owens Charitable Fund	2018	Patricia M. Houlihan & Richard G. Skinner, III Fund	1998
Henri Landwirth Family Endowed Fund	2018	John O. Parrish & Davy Mudd Parrish Advised Fund	2015	Chris & Kirsten Sorensen Fund	2021
Lane Family Endowment	2016	Deborah Pass Durham Fund	2013	Robin & Tabitha Sorensen Advised Fund	2019
Lee Family Fund	2015	Paul Perez Advised Fund	2011	St. Johns Neighbors Fund	2020
Leland & Larson Charitable Fund	2018	Petway Family Foundation Fund	2015	St. Johns Terrace Home Advised Fund	2016
Allen & Sharon Lennon Advised Fund	2012	Phanstiel Family Advised Fund	2007	Brooke & Hap Stein Advised Fund	1997
Debbie Liles Memorial Fund	2017	David L. & Deborah P. Pierson Advised Fund	1996	David A. Stein Charitable Trust	1993
Loeb Family Fund	2017	Jerry & Mary Pietan Family Fund	2021	Linda & Colley Stowell Charitable Fund	2019
Benjamin William Lowe, Jr. Memorial Scholarship Fund	2007	Poli Family Foundation Fund	2008	Beth Jarman Sumner Family Foundation Fund	2004
Jean M. MacSwain Charitable Fund	2022	John & Sue Pope Charitable Fund	2022	Super Heroes 4 Mason Fund	2018
Marigold's Heal the World Fund	2022	Price Family Advised Fund	2007	The Anne Elizabeth Suratt Advised Fund	2000
Julia Munroe McArthur Charitable Foundation	1992	The Putnam Village Fund	2021	John S. & Kristen L. Surface Charitable Fund	2016
McCaleb Family Foundation Fund	2016			John C. & Julia W. Taylor Advised Fund	2017
Martha McCarthy Advised Fund	2017			Taylor Family Fund	2021
Watts McCurry Fund	2022				



Three Fund	2003
Joseph & Carol Thompson Charitable Fund	2022
Thompson Family Charitable Fund	2020
Towe Family Fund	2021
Susan & Jim Towler Charitable Fund	2004
Brent & Alison Trager Family Fund	2017
James C. & Diane M. Treat Advised Fund	2021
Tremonti Charitable Fund	1994
Doug & Paige Tutwiler Advised Fund	2016
John D. & Mary Jane Uible Foundation	1989
Glenn & Lisa Ullmann Advised Fund	2016
Upchurch Family Fund	2013
Kendall Sisisky Valliere Fund	2016
The Jim & Joan Van Vleck Family Advised Fund	1998
George & Mary Elizabeth Varn Charitable Fund	1978
W. Lester & Marjorie Varn Family Fund	1978
David Garrison & Terri Talley Venters Fund	2019
The Ralph N. Walter & Anina M. Walter Charitable Trust	1991
Scott & Catherine Warfield Advised Fund	2022
The Warwick Fund	2021
Alfonzo G. Washington, Sr., African-American Leadership Fund	2004
Jerry D. Watson Fund	2021
Mary V. & Frank C. Watson Advised Fund	1999
Delores Barr Weaver Family Endowment Fund 1	2019
Delores Barr Weaver Family Endowment Fund 2	2019
Delores Barr Weaver Family Endowment Fund 3	2019
Delores Barr Weaver Legacy Fund	2015
J. Wayne Weaver Fund	2020
Delores Barr Weaver TCF Staff Giving Fund Endowment	2020
Weaver Family Endowed Advised Fund 1	2019
Weaver Family Endowed Advised Fund 2	2019
Weaver Family Endowed Advised Fund 3	2019
Weaver Philanthropic Initiative	1999
Klaus & Barbara C. Wenger Family Fund	2021
Tracey Westbrook Family Advised Fund	2009
Margaret & Putt Wetherbee Family Fund	2015
Eartha M.M. White Charitable Fund	2003
Eartha M.M. White Legacy Fund	2004
MaryEllen Willis Fund	2017
R. Halsey & Lisha S. Wise Family Fund	2022
Winston Family Foundation Fund	2022
Ellen & James Wiss Family Fund	2019
Chris Wood Family Advised Fund	2009
YellowDog Advised Fund	2010
Cynthia Zarsky Advised Fund	2017
Karen & John Zell Charitable Fund	2017
Zimmerman Family Fund	2019
Anonymous	2012
Anonymous	2012
Anonymous	2018
Anonymous	2018

○ Awards & Scholarship Funds

Help current and future students pursue education, professional development or other educational enrichment opportunities.

Award Funds

Independent Life C.G. Snead/J.F. Bryan, III Memorial Award	1996
Thad M. Moseley Endowment for Surgical Teaching	1996
USS Monterey Fund	1990

Scholarship Funds

Virginia “Ginger” Ackerman Scholarship Fund	2021
William Walker & John W. (Train) Anderson Scholarship Fund	1980
Willard O. Ash Endowment Fund	1994
Leslie Baker Memorial Endowment	1998
George Ballis Scholarship Endowment	2005
Talen Charles Birt Memorial Fund	2021
Bryan-Gooding Bethune Cookman Nursing Scholarship Endowment	2010
George & Dottie Dorion Scholarship Fund for Bacardi Jacksonville	2017
Jo & Paul Gallagher Family Endowment	2014
Zoe Gaudet Scholarship Fund	2006
William O. & Elizabeth G. Inman Scholarship	1989
Cole Kelley Scholarship Fund	2020
Dick & Becky Kocerha JAGA Scholarship Fund	2018
Kraft/Moore Family Scholarship Fund	1993
Erica Lewis, Esq. Soccer Scholarship Fund	2015
Dr. Linda McLucas Fisher Scholarship Fund	2017
Leonard Lee & Margaret Cox McLucas Athletic & Scholar Award	1991
Talona Mae & Fred William Melber Episcopal Scholarship Fund	2005
Byon M. Morris Charitable Fund II	1992
Emily B. Paulk Scholarship Fund	1992
Sam & Lydia Payne Scholarship Fund	2014
James Thomas Pickren Memorial Scholarship Fund	2002
The Dorothea B. Shaw Scholarship Fund	2007
Craig Speziale Memorial Scholarship	2014
St. Mark’s Episcopal Day School Scholarship Fund	1989
Gabe B. Summers Scholarship Fund	1993
The Anina M. Walter Scholarship Fund	1993
Nan Parker Williams Scholarship Fund	2008
Burgman Winston Youth Orchestra Scholarship Fund	2004
Winston Family YMCA Campership Endowment	2007
Bernie G. Yvon Memorial Fund	2015

○ Suwannee Valley Community Foundation

An affiliate fund of The Community Foundation for Northeast Florida, comprised of Columbia, Hamilton, Lafayette, Suwannee and Union counties. It is governed by a local advisory board.

Helen Davis Brown Endowment Fund	2009
----------------------------------	------

Campbell Park Endowment	2006
Columbia County Senior Services, Inc. Endowment Fund	2011
Patrick Douglas Charitable Fund	2022
First Federal Bank of Florida Charitable Fund	2017
Robert & Elizabeth Haven Fund	2010
Gladys L. Kirkland Endowment Fund	2016
James H. Montgomery Charitable Fund	2006
James H. Montgomery Suwannee Valley Endowment	2004
Joseph N. Persons Charitable Fund	2019
Marion C. Persons Charitable Fund	2003
Marion Carson Persons Charitable Fund	2007
Constansha Rowe Endowment for Haven Hospice	2022
Constansha Rowe Endowment for Meridian	2022
Constansha Rowe Endowment for Pregnancy Crisis Center	2022
Suwannee Valley Community Foundation Unrestricted Endowment	2005

○ Collective Giving

Make a larger financial impact and creates momentum that is more difficult to achieve with a single gift.

A.L. Lewis Black Opportunity & Impact Fund	2022
Beaches Community Fund	2015
LGBTQ Community Fund for Northeast Florida	2013
Women’s Giving Alliance	2002

“Through my work with the LGBTQ Community Fund, I got to know the staff of The Community Foundation and really how the organization operated. I was amazed at the depth of the connections, local, regional and national, and the way we gather data to make decisions. It makes it so that when The Community Foundation leads on an issue, we do it with state-of-the-art approaches.”

Michael Meyers, trustee and fundholder





2022 BOARD OF TRUSTEES

Our Board of Trustees is deeply committed to the vision of stimulating philanthropy to build a better community.

They generously contribute their time and talents to ensure that The Community Foundation grows and prospers so that Northeast Florida can benefit, forever. The full Board meets four times a year and the Audit, Finance, Investment, Governance, Program & Initiatives, and Program Related Investments committees meet at least quarterly as well.

Board Committees

Back row, left to right:

Buddy Schulz | Trial Lawyer, Mediator, Arbitrator | ◆
Martha Frye Baker | Community Volunteer | ◆◆ (Chair)
Robert Hill | Retired CEO, Acosta | ◆◆ (Chair)
Richard L. Sisisky | President/Owner, The Shircliff & Sisisky Company | ◆◆
George Egan | President & CEO, Reinhold Corporation | ◆◆ (Vice Chair)
Lauren Rueger | Communications Consultant | ◆◆
Halsey Wise | Chairman & CEO, AfterNext HealthTech | ◆
Michael DuBow | DuBow Family Foundation | ◆◆◆ (Chair)

Front row, left to right:

Julia Taylor | Community Volunteer | ◆ (Chair)
Michael Meyers | Retired Attorney | ◆◆◆ (Chair)
Carol Alexander | President & Chief Creative Officer, MaBu: A Cultural Resource | ◆
The Honorable Brian J. Davis | U.S. District Court Judge | Chair of the Board | ◆◆◆◆◆
Sol Brotman | VP, National Clinical Operations, Life & Specialty Ventures | ◆◆ (Chair)
Velma Monteiro-Tribble | Retired Senior Director, Florida Blue Foundation | ◆

Not pictured:

Barbara Harrell | Community Volunteer | ◆

Other Committee Members

Deborah Pass Durham (Past Board Chair) | ◆◆
David Gonino (Community Member) | ◆
Wilford Lyon (Former Trustee) | ◆
Peter Reynolds (Community Member) | ◆
Dan Rice (Past Board Chair) | ◆
Susan Remmer Ryzewic (Former Trustee) | ◆
Ryan Schwartz (Past Board Chair) | ◆
Jason Spencer (Community Member & WPI Alumnus) | ◆
Dori Walton (Former Trustee) | ◆◆

◆ **Audit** | ◆ **Finance** | ◆ **Investment**
◆ **Governance** | ◆ **Programs & Initiatives**
◆ **Program Related Investments (PRI)**



MEET THE STAFF

Between us, we have more than 180 years of experience here at The Community Foundation and are always seeking ways to better serve our donors and our larger community. For more information about individual staff members, go to jaxcf.org/staff.



Back row, left to right: **James Coggin**, MBA, Senior Director, Grantmaking and Impact Investing; **Amber Jubinsky**, MAcc, Director, Accounting; **Lijanda Armstrong**, Administrative Assistant; **Janet Allen**, Program Director; **Socrates Rivers**, MBA, Director, Development

Front row: **Stephanie Garry Garfunkel**, MA, Vice President, Strategic Communications; **Wanda Willis**, MA, Vice President, Civic Leadership; **Katie Higginbotham**, Digital Communications Associate



Back row, left to right: **Reagan Bass**, MPA, Program Officer; **Paula McCormick**, Accountant; **Tom Caron**, Vice President, Donor Services; **Nikki Sabol**, Director, Women's Giving Alliance; **Brandon Anderson**, Grants Specialist

Front row: **Leah Show-Wright**, Program Assistant; **Amy Crane**, Senior Director, Grantmaking; **Erin Broderick**, MBA, Senior Director, Finance



Back row, left to right: **Latrice Wright**, Executive Assistant, Office of the President; **Kathleen Shaw**, MEd, Senior Vice President, Program and Initiatives; **John Zell**, CAP®, Vice President, Development; **Nina Waters**, President; **Tyson Schmick**, Information Systems Manager

Front row: **Grace Sacerdote**, CPA, Executive Vice President & Chief Financial Officer; **Kacie Smyth**, MHA, Director, Donor Services; **Carol Nieves**, Donor Services Officer



2022 FINANCIAL SUMMARY

SUMMARY AUDITED STATEMENTS

Financial Position *as of December 31, 2022 & 2021*

Assets	2022	2021
Cash & cash equivalents	\$55,003,036	\$45,113,950
Investments	466,184,202	556,630,202
Other assets	27,203,330	28,622,935
TOTAL	\$548,390,568	\$630,367,087

Liabilities & Net Assets	2022	2021
Current liabilities	\$14,153,844	\$5,276,490
Funds held as agency endowments	18,094,996	20,264,088
Foundation net assets	516,141,728	604,826,509
TOTAL	\$548,390,568	\$630,367,087

Rising Expectations
Christie Holechek
2022 Art Ventures grantee
Acrylic & paper on canvas

Activities *for the years ended December 31, 2022 & 2021*

Revenue & Support	2022	2021
Gifts received	\$53,371,391	\$60,691,822
Net investment returns	(78,414,274)	61,096,989
Other	(2,626,428)	1,416,889
TOTAL	(\$27,669,311)	\$123,205,700

Grants & Expenses	2022	2021
Grants awarded & programs	\$56,743,041	\$41,496,808
Support services & other	\$4,272,429	\$3,685,550
TOTAL	\$61,015,470	\$45,182,358

Change in Net Assets	2022	2021
NET ACTIVITY	(\$88,684,781)	\$78,023,342



THE COMMUNITY
FOUNDATION
FOR NORTHEAST FLORIDA

Giving Back. Giving Forward.

245 Riverside Avenue | Suite 310 | Jacksonville, FL 32202
Phone: (904) 356-4483 | Fax: (904) 356-7910

info@jaxcf.org | jaxcf.org