

NONPROFIT ORG.  
U.S. POSTAGE PAID  
PERMIT NO. 1678  
JACKSONVILLE, FL

ADDRESS SERVICE REQUESTED

EVERLASTING

*Vision*

EVER-CHANGING

*View*

2015 REPORT TO THE COMMUNITY



THE COMMUNITY  
FOUNDATION  
FOR NORTHEAST FLORIDA

245 Riverside Ave., Ste. 310  
Jacksonville, FL 32202  
Phone 904-356-4483  
Visit [www.jaxcf.org](http://www.jaxcf.org)



Excellence. Accountability. Impact.™

Confirmed in compliance with National  
Standards for U.S. Community Foundations



THE COMMUNITY  
FOUNDATION  
FOR NORTHEAST FLORIDA



...an everlasting  
*vision* of the  
ever-changing *view*

### Fabricio Farias

I am interested in the unique variability that exists through repetition and the relationship that all the varied objects, in turn, have with each other. In order to understand why and how differences stem from objects, I continually create and recreate them.

Repetition provides me with greater awareness of how the objects behave, are created, and how they tend to differ. In turn, it leads to a more unique object among all of the other iterations.

The differences, similarities, and juxtaposition of these elements allow me to see and interpret new relationships and understandings among the objects and the people from which the work stems.



Fabricio Farias, a 2015 Art Ventures Fund grantee, created a 30-foot tall tapestry made of approximately 2,200 printed felt pieces.



### Dear Valued Friends:

2015 was a defining year in The Community Foundation's history—we celebrated the 25th anniversary of one of our most enduring initiatives, Art Ventures, an endowed fund created in 1989 to support individual artists and small arts organizations in perpetuity. A 2015 Art Ventures Fund grantee, Fabricio Farias, created the magnificent tapestry seen on our cover—he joins nearly 200 talented artists and emerging small arts organizations who have received funding since 1990.

Our celebration of Art Ventures reminds us that there is much more to this initiative than the annual grants. First and foremost, we listened to our donor—the National Endowment for the Arts—who wanted a partner with which to move the arts community forward. Second, the donor wanted us to fully engage—requiring us to raise \$400,000 in unrestricted gifts to access their generous match of \$200,000. Third, because Art Ventures is an endowment which exists in perpetuity, we have become integrally involved in the arts community, helping us encourage burgeoning talent and offer a safe space for experimentation. Finally, we have used Art Ventures' credibility to collaborate with others to move forward our region's cultural agenda. We think these are the fitting benchmarks for an organization whose mission is to stimulate philanthropy to build a better community.

We'd like to think Art Ventures embodies our role in Northeast Florida, defining why we have grown and flourished for 51 years. As we look at Fabricio Farias' work and consider our own, we are reminded of Carole King's "Tapestry," which she describes as "...an everlasting vision of the ever-changing view." At The Community Foundation, we bear the everlasting vision of our donor's intent into the future, while at the same time responding to the ever-changing view of needs in our community.

Inside the pages of this report, we believe you will see the pattern established with the Art Ventures Fund repeated in many different areas—always with the donor's intention at the center, and with The Community Foundation using all its resources to respond to the donor's vision. Nearly 500 individuals, families, businesses and organizations that have created funds here make up our tapestry. Every day, we make grants on their behalf and invest our time, talent and treasure in our community. We remain committed to honoring each donor's intent, and to working in partnership with others to weave together a better Northeast Florida for all of us.

With gratitude,

Bill Brinton,  
Chairman of the Board

Nina Waters,  
President



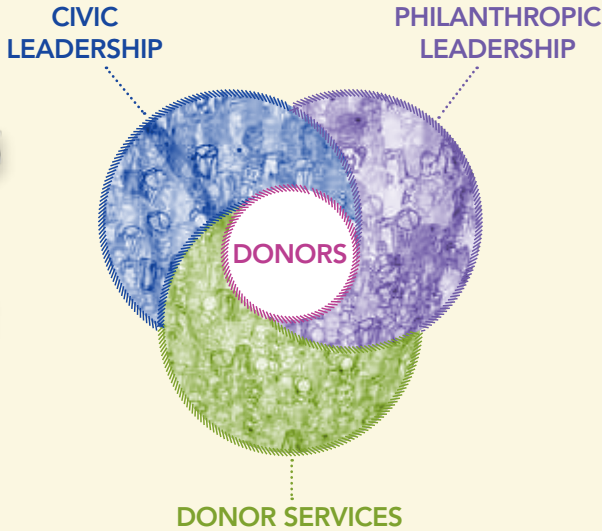
Photography by laird/blac palm inc.



# Who We Are & What We Do

The Community Foundation for Northeast Florida is comprised of nearly 500 funds established by caring people in Northeast Florida who believe in Giving Back, Giving Forward. Each fund has a singular mission, and collectively they form a tapestry that allows us to enhance our community.

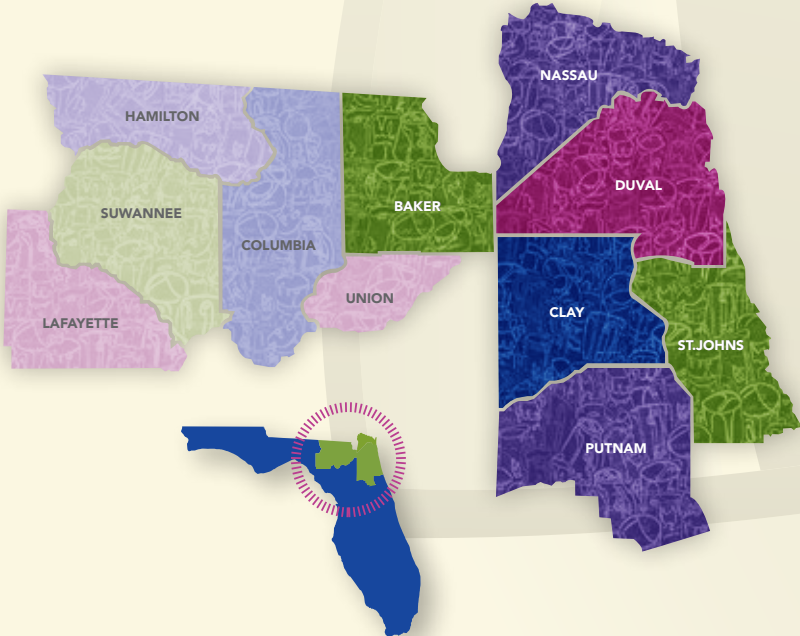
Since 1964, we have helped donors achieve their individual philanthropic goals while supporting the citizens of Northeast Florida through a range of charitable and civic activities made possible by their collective gifts.



## Serving Northeast Florida

Since 1964, we have served the citizens of Duval, St. Johns, Nassau, Baker, Clay and more recently, Putnam counties.

We also serve the communities of the Suwannee Valley Community Foundation, an affiliate of The Community Foundation for Northeast Florida.





THE COMMUNITY  
FOUNDATION  
FOR NORTHEAST FLORIDA

*Giving Back. Giving Forward.*

### Our Mission: Stimulating Philanthropy to Build a Better Community

We exist because of the generosity of our donors—the philanthropic individuals, families, businesses and organizations who use their fund(s) to help build stronger communities. We have helped countless beneficent fundholders understand their financial options and maximize their charitable giving; in turn, thousands of area organizations have benefited from the more than \$369 million in grants we have made since inception.

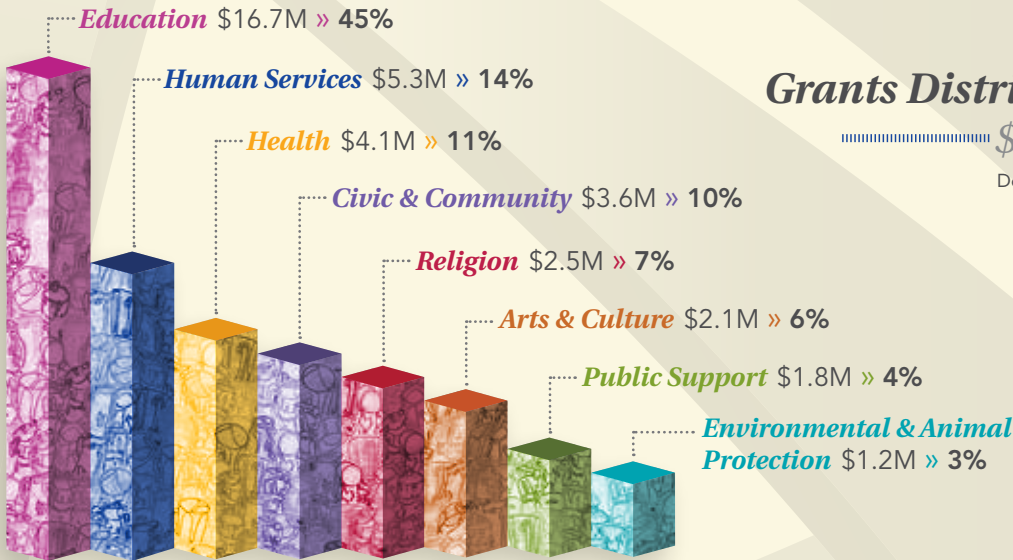
We have acquired deep knowledge of local issues, and we embrace our ability to help lead positive change in our community. It is this legacy of civic and philanthropic leadership which motivates us, with the understanding that it is our donors who are the source of our ability to do good work, forever.

## 2015 by the Numbers

Over the past 51 years, Foundation assets have grown steadily thanks to new funds being established, additional gifts to existing funds, and the investment returns earned on our investable assets. More than 80% of our assets are donor-directed, meaning fundholders are able to recommend grants to specific nonprofit organizations.

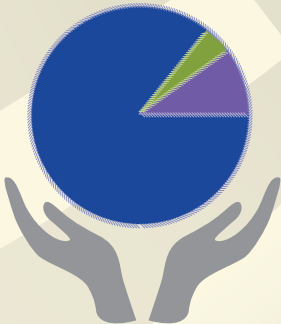
We have also been fortunate to acquire significant assets for our discretionary grantmaking—which enables us to support our civic and philanthropic leadership initiatives. In 2015, we oversaw more than \$37 million in grants.

Total Assets  
\$313M



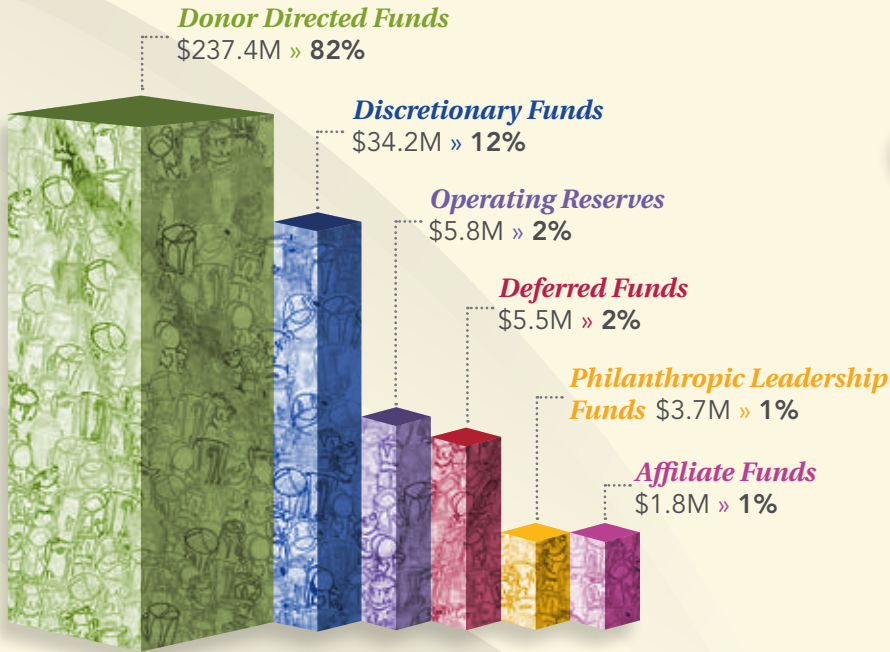
## Where Our Grant Dollars Went

Though our primary service area is Northeast Florida, we have donors whose philanthropic support covers a much larger area. We are always happy to support the connection between our donors and their nonprofit organizations, wherever that may be.



Northeast Florida » 86%  
Elsewhere in Florida » 4%  
Outside of Florida » 10%

Net Assets  
\$288.4M  
Dollars in millions



Grants Distribution - All Funds  
\$37.3M  
Dollars in millions



# 2015 Highlights

## 25th Anniversary of Art Ventures

We celebrated 25 years of Art Ventures grantmaking to individual artists and small arts organizations with two events. In November, we celebrated at the J. Johnson Gallery, where Terrance L. Patterson, founder and artistic director of the Ritz Chamber Players received the inaugural Ann McDonald Baker Art Ventures Award. And in December, the 2015 Art Ventures grantees had a special exhibition at the UNF Gallery at the Museum of Contemporary Art.



## Focus on Family Philanthropy

Attention to the surge of family wealth that is currently being transferred to the next generation prompted us to bring a nationally known expert on the subject to Jacksonville in the spring. Sharna Goldseker of 21/64 led three, thought provoking sessions with funders, with our next generation philanthropy group, and with fundraising professionals. Her work gets to the heart of how and why wealthy donors differ by generation, and what that means for philanthropy in the future.



## The Curtain Rises on The Met: HD Live in Schools

A milestone moment occurred in October, when The New York Metropolitan Opera was beamed live into a newly renovated, high definition theater at Douglas Anderson School of the Arts. Longtime fundholder Lawrence DuBow's love of opera led him to Opera Jacksonville, a nonprofit that has been a repeat grantee from The Community Foundation. Together, he and Opera Jacksonville worked with The Met and the Duval County Public Schools to create this state of the art facility so that the number of students who can experience these performances will increase by ten-fold.



## Civic Engagement

We value the place The Community Foundation has earned in many important civic conversations. Through our Donors Forum series, we initiated conversations about public/private funding partnerships with Jacksonville City Council candidates before the election, and brought newly elected Mayor Lenny Curry to review his first 100 days in office. The Donors Forum brings together corporate, family and private funders for discussion and idea-sharing.



## Weaver Philanthropic Initiative

For the sixth time since the inaugural class in 1999, we assembled a group of the most promising next generation philanthropists to make up the 2015 Class of the Weaver Philanthropic Initiative.

These dynamic, curious men and women spent several months learning about critical issues in our community, ways in which strategic philanthropy can be employed, and ultimately, how to approach their personal grantmaking. By the end of their program, they had made grants of more than \$75,000 to 17 local agencies.

# 2015



34 New Funds



\$46 Million  
in New Gifts



\$313 Million  
in Total Assets



\$37 Million  
in Grants



1,819  
Grants Made



736 Grantee  
Organizations



# The Power of Collective Giving

It's part of our core mission to *stimulate philanthropy* and we are great believers in this kind of *communal giving*

Collective giving is the very essence of philanthropy as a tapestry. When like-minded donors come together to advance an idea and pool their resources toward a common goal, transformational results can occur. The multiplier effect of such philanthropy cannot be underestimated.

At The Community Foundation, we have been shepherding the collective giving concept since we launched the Women's Giving Alliance in 2001. Today, we have five collective giving funds—sometimes known as giving circles—at The Community Foundation, including two new ones in 2015!

## MyVillage Project Community Fund est. 2015

Three dynamic young members of our next generation program (Weaver Philanthropic Initiative) chose to create their own giving circle, resulting in the MyVillage Project Community Fund.

These young professionals—Imani Hope, Darryl Willie and Ronnie King—have big plans for their giving circle, which has as its goal 'strengthening lives within the Black Community in Northeast Florida.' They plan to support nonprofits serving and/or led by African Americans in pursuit of that mission.

Their initial friend-and-fundraising event drew a lively crowd, and they have already established a website that will support their efforts. [www.myvillageproject.org](http://www.myvillageproject.org)



MY VILLAGE PROJECT

## Beaches Community Fund est. 2015

Serious introspection, coupled with two years of outreach and focused research, culminated in the launch of the Beaches Community Fund, a giving circle of Beaches-area residents committed to help the underserved living near our treasured coastline.

Trustees Martha Baker and Tracey Westbrook have attracted more than two dozen families to make a multi-year commitment to pool their resources. Their first grants made a big splash: \$75,000 to Beaches Emergency Assistance Ministry (BEAM) to partner with Feeding Northeast Florida to establish a food bank.

The new facility, located at 7North in Jacksonville Beach, is an essential distribution hub for 30 agencies that provide food and/or meals in the Beaches area.

The Beaches Community Fund also granted \$10,000 to the Nonprofit Center of Northeast Florida to provide highly desirable training and networking opportunities for Beaches-area nonprofits, now known as the Eleanor Ashby Leadership Series.



## Quality Education for All (QEA) Fund est. 2013

The \$40 million Quality Education for All Fund just finished its second year of grantmaking. Created by a small group of impassioned philanthropists led by Chairman J. Wayne Weaver, the QEA Fund invests in attracting and retaining high quality teachers and leaders in partnership with Duval County Public Schools (DCPS). The effort is concentrated in 36 underperforming schools known as the Duval Transformation Region.

Grounded in the research and community dialogue generated by The Community Foundation during its 10-year Quality Education for All initiative, the QEA Fund makes signature investments in programs that encourage good teachers to become better, and build educational leadership for the future. If the programs show promise, the school system can bring the effort to scale, other funders may be more willing to step in, and of course, ultimately the students reap the benefits.

"The strategy of the Quality Education for All Fund is to build a pipeline to ensure that the best teachers and leaders are working in schools where they are needed most," said Wayne Weaver.

### The QEA Fund's primary investments include:

**Performance incentives for high performing teachers and leaders in 36 underperforming schools.** Initial results show that the number of high performing teachers increased in these schools between 2013 and 2014, while the number of low performing teachers decreased over the same period.

**More Teach For America teachers in the Duval Transformation Region,** including promising retention results in those schools.

**A cadre of 29 talented assistant principals entered the Emerging Leaders Program**—principal training designed to prepare them for the rigorous duties of a school principal.

**Funding for an innovative data portal** that will allow parents, students and teachers easy access to vital information for research-based decision making. The four-school pilot is already underway with full rollout expected later this year.

As the initiator of Quality Education for All in 2004, and the home of the QEA Fund which will continue to make grants through 2018, we have a significant stake in school progress. We are delighted that Duval County's graduation rate rose to 74 percent in 2014, an improvement of nearly two percentage points over the prior year. And importantly, Duval's graduation rate among African-American students continues to show significant increases and now ranks second among the state's largest seven districts. For more information, go to [www.qeafund.org](http://www.qeafund.org).

We know that with committed, *qualified leadership* and highly trained, *passionate teachers* in our classroom, *all kids can learn.*

- Wayne Weaver, Chairman, QEA Fund Advisory Board



**The Jacksonville Teacher Residency Program,** a partnership between DCPS and University of North Florida, mirrors a medical residency. These STEM college graduates are mentored by master teachers in our most challenged schools while becoming fully qualified to teach.

All nine Class of 2015 JTR students were offered full time teaching duties at their schools for this school year. A new class of JTR students hopes to duplicate the initial class' success.





## Women's Giving Alliance (WGA) *est. 2001*

WGA may be The Community Foundation's oldest giving circle, but it continued its pioneering ways in 2015. With a record 365 members, including 42 women who created WGA Legacy Endowments, WGA made \$395,000 in grants to support mental health services for women and girls in Northeast Florida.

WGA Advocacy leaders turned their attention to the issues of human trafficking, while the Steering

Committee looked forward to the next phase of grantmaking by funding new research on women and girls in Northeast Florida.

The WGA also ushered in its first class of Delores Barr Weaver Fellows,

a dynamic cohort of young women who will enjoy individual mentors and financial support to pave their way to full membership.

For more information, visit WGA's robust new website [www.wganefl.org](http://www.wganefl.org), also unveiled in 2015.



## LGBT Community Fund *est. 2014*

Launched in 2014, the LGBT Community Fund for Northeast Florida continued its momentum in 2015—inviting additional contributors into its ranks, and capping the year with more than \$100,000 in grants to support its focus areas: organizations that serve LGBT youth, elders and families.

At its October annual meeting, contributors ratified the suggested grants to:

- » **ElderSource** to fund LGBT Elder Sensitivity Training.
- » **Jacksonville Area Sexual Minority Youth Network, Inc.** to provide support to JASMYN for a Development Director to help fund greater demands for service.
- » **Parents, Families and Friends of Lesbians and Gays** to support strategic planning capacity building for PFLAG.
- » **The UNF LGBT Resource Center** for a community mentoring program and to bring a nationally recognized LGBT leader to campus.

For more information, visit [www.lgbtnefl.org](http://www.lgbtnefl.org)



## Discretionary Grantmaking

### Putting Our Community Knowledge to Work

Although most funds at The Community Foundation are donor-directed, we are privileged to have a growing number of Unrestricted and Field of Interest Funds from which we can direct grants in support of various causes that improve the lives of the citizens of Northeast Florida.

These discretionary grants are possible because generous donors either charged The Community Foundation with determining the most pressing community needs or because donors directed their gifts toward a particular area and asked TCF to choose specific grantee(s). Both fund types help elevate grantmaking because of their flexibility to address evolving issues and opportunities, and because they allow us to work with other funders to leverage needed resources.

In 2015, we made Unrestricted and Field of Interest Grants totaling more than \$1 million to almost 100 local nonprofit organizations and eight individual artists. On the following pages, you'll get a sense of the areas where we believe the deployment of community resources had the best opportunities for progress and success.

It is important to note that the 2015 grants described on the following pages do not include significant multi-year investments to certain agencies we historically support. The following legacy investments had open grants for general operating support during 2015 through grants approved and recorded in earlier periods.



**Jacksonville Public Education Fund**  
**\$150,000** → Granted \$150,000 in 2014  
\$50,000 per year for 2014, 2015 and 2016

**Nonprofit Center of Northeast Florida**  
**\$60,000** → Granted \$60,000 in 2014  
\$20,000 per year for 2014, 2015 and 2016



**Local Initiatives Support Corporation (LISC)**  
**\$100,000** → Granted \$100,000 in 2014  
\$50,000 per year for 2014 and 2015

We would not have been able to make any of these important investments were it not for the visionary donors who established these Unrestricted and Field of Interest funds at The Community Foundation. We are forever indebted to them.

- A.D. Davis Family Advised Fund
- Alynn Sharp Art Fund
- Anne and Sallyn Pajcic Art Ventures Endowment
- Art Ventures Endowment Fund
- Dr. JoAnn Crisp-Ellert Fund
- Frank V. Oliver, Jr. Endowment
- Grace H. Osborn Endowment
- Harold K. Smith Charitable Fund
- I.R. Bowen and Katherine H. Bowen Fund
- Independent Life Minority Arts Award Fund
- J. Shepard, Jr. and Mary Ann Bryan Arts Endowment
- J. Wayne and Delores Barr Weaver Senior to Senior Fund Endowment
- Jacksonville Children's Endowment
- Jay and Deanie Stein Unrestricted Fund
- Katherine and Richard Kip Endowment
- The Community Foundation President's Discretionary Fund
- The Community Endowment Fund

- Jessie Ball duPont Reflective Practice Endowment Fund
- John D. and Mary Jane Uible Endowment
- Quality Education for All Fund
- Donald and Terri McIntire Fund
- Robert T. and Carol R. Shircliff Charitable Endowment
- Jacksonville Neighborhood Endowment Fund
- Kenneth H. Millar, Jr., Memorial Fund

For a complete listing of all Unrestricted and Field of Interest funds, see pages 26–27.



## Aging Adults » \$211,000

\$150,000 / Northeast Florida Area Agency on Aging, Inc.  
Senior to Senior Program

\$10,000 / Baker County Council on Aging, Inc.  
Upgrade computer server and integrate new client system software

\$10,000 / Clay County Council on Aging  
Develop a project prospectus for property to build affordable senior housing

\$10,000 / Urban Jacksonville, Inc.  
Develop a data integration system to merge three distinct client databases

\$10,000 / Senior Roundtable  
Facilitation of Senior Roundtable

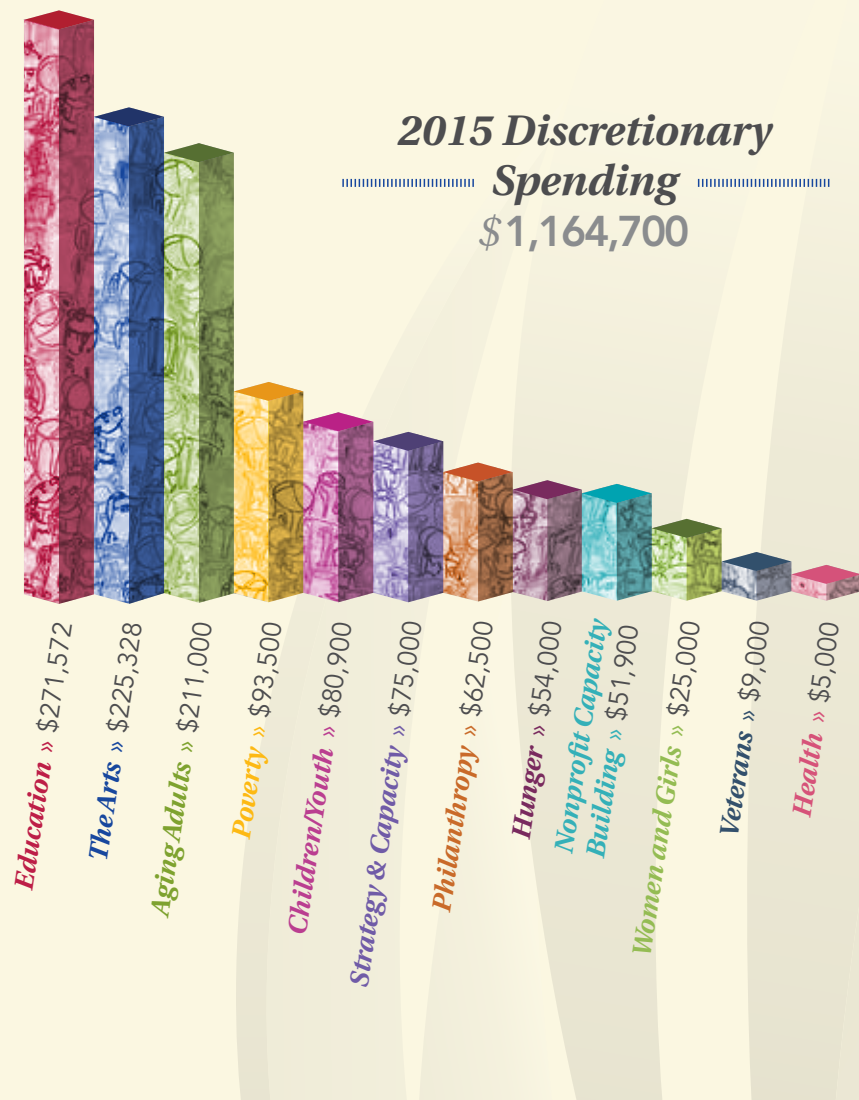
\$10,000 / St. Johns County Council on Aging  
Develop of a comprehensive promotional package for the Memory Enhancement Program

\$10,000 / Nassau County Council on Aging, Inc.  
Three capacity building projects to help reduce expenses and generate revenue

\$1,000 / Al Emerick Productions, LLC  
Facilitate training for communicating organizational message

## Arts » \$225,328

\$2,500 / The Florida Ballet  
Allow two teachers to continue certification in the American Ballet Theatre Teacher Training Curriculum



## Arts continued

\$2,500 / Hope at Hand, Inc.  
Attend the National Association of Poetry Therapy conference

\$20,000 / Opera Jacksonville  
To provide live video streaming of The Met: Live in HD to public school students

\$2,500 / St. Johns County Cultural Council  
Workshop on marketing techniques for local artists; in partnership with Americans for the Arts

\$10,000 / Beaches Fine Arts Series  
Complete a facilitated strategic planning process with staff and the Board of Directors

\$5,000 / Don't Miss A Beat, Inc.  
Develop communications and branding strategies to build sustainable development practices

\$3,400 / Ana Paula H. Habib  
Complete a short action documentary about the fragile nature of the Indian River Lagoon

\$3,500 / Hiromi M. Moneyhun  
Properly mount and frame approximately 20 of the artist's paper cut pieces, allowing more widespread exhibition

\$3,500 / Roy Berry  
Equipment and printing for the photographic series, "Nostalgia," an urban landscape project

\$2,200 / Fabricio Farias  
Purchase felt and clay to complete three installations that will explore religious themes in the American South

\$3,500 / Tony Walsh  
Production assistance for "Southern Stories," a theatre piece based on the writings of Harriet Beecher Stowe

\$3,452 / Patrick Barry  
Purchase a film editing platform to complete various film projects

\$3,500 / Kate G. Rouh  
Participation in a masterclass for the Zager method of creating mosaics

\$3,500 / Darryl R. Hall  
Professional recording of original compositions from the artist's play, "Drawn from the Water"

\$2,440 / St. Johns County Cultural Council  
Printing of 20,000 brochures featuring 35 galleries in St. Augustine

\$2,500 / Limelight Theatre, Inc.  
Promotional activities to heighten the awareness of artists exhibiting at the Limelight Theatre

\$5,000 / Vilano Beach Main Street, Inc.  
Mosaic mural for the downtown fountain, in partnership with the Florida School for the Deaf and Blind

\$10,000 / Flagler College  
Artists' travel and honoraria for a series of lectures, workshops, and events related to a year-long exhibition series

## Early Childhood: Unlocking Potential for Tiny Citizens

For more than 20 years, we have been making grants through the Jacksonville Children's Endowment to agencies providing services for young children. Most recently, we've concentrated on efforts that build on the recommendations of JCCI's Children 1-2-3 Study, whose implementation phase we helped support in 2012.

This year, we funded 25 early learning centers with supplemental curriculum materials to provide quality summer learning activities for children ages 0-3, and we were gratified to bring in The Chartrand Foundation to underwrite a corresponding program for children ages 4-5 in those centers.

We also continued our work with The Chartrand Foundation on the 3-year grant to Early Learning Coalition of Duval we made in 2014. That effort resulted in a major website launch aimed at providing parents, caregivers, child care providers and others with resources and guidance for young children.

Now in its public awareness phase, the campaign should help provide more tools to help the community implement the recommendations of the Children 1-2-3 study.

Visit [www.earlylearningjax.org](http://www.earlylearningjax.org) to learn more.



**2015**  
**Funded 25 early learning centers'**  
**summer learning programs**



## Aging Adults: Expanding Horizons for Lead Agencies

The important and growing sector of aging adults has long been a Field of Interest for us. In 2015, we focused our support on building capacity for area Lead Service Providers (often called Councils on Aging) because they are the main conduit for home and community-based services in our region. Aging True (Duval County), and the Baker County, Clay County, Nassau County, and St. Johns County Councils on Aging have deep expertise in and a unique perspective on the challenges older people face.

In 2015, we awarded each agency \$10,000 to help them learn how to reduce expenses, generate revenue and/or solve community problems to improve the quality of life for seniors. The Lead Service Partners met regularly to share progress of their individual capacity projects as well as discuss regional ideas and opportunities.

We learned that the most pressing and common issue for the Lead Service Partners was the effective communication of their mission. Each agency has a "for-profit" enterprise they are either incubating or implementing, designed to generate income for the organization's mission. But public perception of their ability to provide quality services has been a barrier.

In response, we helped provide a half-day of training with a communication consultant. Since that meeting, three agencies have continued working with a communication/organizational development consultant to refine their marketing messages.



## Spotlight: St. Johns County Council on Aging

With nearly 5,000 residents experiencing some kind of memory loss, the St. Johns County Council on Aging has a compelling need to provide service. In 2015, we made a grant to SJCOA to expand their memory enhancement program in St. Augustine from six to 10 locations.

The expansion exceeded their expectations—not only surpassing the goal for the numbers of seniors and caregivers served, but in their ability to grow their private pay participants—a key sustainability measure.



# The Arts: How *investing in artists* pays dividends *beyond the museum walls*

The Community Foundation invests in artists. Not art. For decades, we have supported emerging individual artists and small arts organizations thanks to the Art Ventures Endowment established in 1989. And because of that foundational work, we have become interwoven in the fabric of the cultural community in Northeast Florida.

We are able to partner with other funders and nonprofits to widen the circle of support to this sometimes fragile community, in ways that help create solid ground for artists to gain exposure and confidence.

In 2015, we celebrated 25 years of Art Ventures grants—reminding the community that nearly 200 artists and small

arts nonprofits had received \$1 million to perfect their craft and strengthen their organizations.

Through the Dr. JoAnn Crisp-Ellert Fund, we were also able to offer the lead support for a signature project for St. Augustine's 450th Anniversary—the Obelisk 450 project commissioned by Compassionate St. Augustine.

And late in the year, we partnered with the Cultural Council of Greater Jacksonville to provide a world-class series of learning workshops, presented by the Creative Capital Foundations in New York, to assist local artists in

everything from fundraising to strategic planning in order to advance their art. Each of these efforts buttresses the cultural community in ways that reward both the artist and our society at large.



...the value of these workshops will have a *ripple effect of progress* not just for the participating artists themselves, but also for the *creative community at large*.

- Tony Alegretti, Executive Director of the Cultural Council of Greater Jacksonville

**\$15,000 / St. Augustine Initiative for Compassion**  
Stipends and professional photography for 24 artists who participated in the Obelisk Art 450 project

**\$25,000 / WJCT, Inc.**  
To support the Cultural Fusion Collaborative and its Year of the River project

**\$25,000 / Cathedral Arts Project, Inc.**  
Communications for the Any Given Child-Jacksonville initiative

**\$3,500 / University of North Florida**  
Support for the 2015 Art Ventures grantee exhibition at the Museum of Contemporary Art Jacksonville/UNF Gallery

**\$10,000 / Terrance L. Patterson**  
Ann McDonald Baker Art Ventures Award

**\$25,000 / Cultural Council of Greater Jacksonville, Inc.**  
Implementation and administration of Creative Capital's "Blended Learning" professional development series

**\$5,000 / Douglas Anderson School of the Arts**  
Donor reception naming the Lawrence J. DuBow Theatre at Douglas Anderson School of the Arts

**\$1,336 / Duval County Public Schools**  
Dimensional Letters for Douglas Anderson theatre signage

**\$1,500 / KBT & Associates**  
Facilitation of a focus group of local artists

**\$25,000 / Ann McDonald Baker Art Ventures Award**  
Recognize outstanding artistic achievement

## Children / Youth » \$80,900

**\$5,000 / The Salvation Army of Northeast Florida**  
Training, resources and materials for staff working with children ages 0-3

**\$5,000 / All Saints Early Learning and Community Care Center, Inc.**  
Buy curricula and provide training for new staff working with children ages 0-3

**\$20,000 / Jacksonville Children's Commission/ECS**  
Supplementary curriculum materials to provide quality summer learning activities for children ages 0-4 for 25 childcare centers

**\$10,000 / Communities in Schools of Northeast Florida**  
Expand the agency's integrated student services model to Mellon Elementary School

**\$10,000 / Kelly Smith Elementary School**  
Support the school's music program expansion.

**\$12,000 / Rodeheaver Boys Ranch**  
Challenge grant to support children residing at the ranch

**\$2,000 / Police Athletic League of Jacksonville, Inc.**  
Support for "DNA Unique"

**\$10,000 / DLC Nurse & Learn, Inc.**  
General operating support for summer 2015

**\$400 / City of Jacksonville**  
Support for the College, Career and Trades Fair hosted by Mayor's Young Leaders Advisory Council

**\$1,500 / Jacksonville Area Sexual Minority Youth Network**  
Tickets for students in Jacksonville to see the film SELMA

**\$5,000 / Jacksonville University**  
Upgrade for the Creative Music and Movement Room at Wilma's Little People's School

## Education » \$271,572

**\$200,000 / QEA Initiative**  
To improve teachers and leaders in Duval County Public Schools

**\$10,000 / St. Johns River State College Foundation, Inc.**  
Continued support for eligible students who have already benefited from a first year scholarship

**\$10,000 / Putnam County School District**  
Upgrades to the Culinary Arts program at Interlachen and Palatka High Schools

**\$7,871 / First Coast Technical Institute**  
Support for vocational students in achieving their academic goals

**\$30,000 / Jacksonville Chamber Foundation, Inc.**  
Support for the Earn Up Initiative

**\$6,951 / Eugene Butler Middle School**  
Uniforms for 80 students enrolled in the Young Women's Leadership Academy

**\$750 / Duval County Public Schools**  
Success by Design Family Conference

**\$1,000 / Edward Waters College**  
Support for Fine Arts Scholarship Benefit Concert

**\$5,000 / Yeardley Reynolds Love Foundation, Inc.**  
Host relationship violence awareness week in Jacksonville

## Health » \$5,000

**\$5,000 / Putnam First Cancer Fund**  
Connect cancer patients with basic necessities, and assist with diagnostic services

## Hunger » \$54,000

**\$5,000 / Putnam County Bread of Life Inc.**  
Operational support of Bread of Life's feeding service

**\$7,000 / Mt. Carmel Community Resource Center**  
Expanding the agency's refrigeration capacity

# The Ann McDonald Baker Award Winner Terrance L. Patterson



Left to right: Tom Baker, Martha Baker, Margaret Weatherbee, Terrance Patterson, Missy Baker Boney, Ted Baker.

The Community Foundation for Northeast Florida proudly bestowed its first ever Ann McDonald Baker Art Ventures Award on Terrance L. Patterson, founder and artistic director of the Ritz Chamber Players.

The award, which includes a \$10,000 unrestricted grant, recognizes an artist whose work brings distinction to Northeast Florida, and is named for the late Ann McDonald Baker, whose leadership helped create and nurture such vital cultural gems such as The Community Foundation's Art Ventures Fund, the Arts Assembly (now the Cultural Council) and Douglas Anderson School of the Arts, among others.

Patterson is a distinguished clarinetist who has performed all over the world. In 2002, he created the Ritz Chamber Players, the nation's only concert series featuring an all African-American chamber music group. He has developed his ensemble to national and international acclaim, while remaining resolutely committed to his hometown.

Locally, he provides educational opportunities for children, including concerts and 'informances' designed to introduce children to chamber music and classical music composers.

Truly, *we are indebted to Ann McDonald Baker for her leadership, and believe Terrance and the Ritz Chamber Players embody the heart of what she envisioned making this award so meaningful for all who cherish her memory and her legacy.*

- Nina Waters, President,  
The Community Foundation for Northeast Florida



*Hunger continued*

\$10,000 / South Putnam Christian Service Center  
Challenge grant to help with the pick-up and delivery  
of donated food in Putnam and surrounding counties

\$7,000 / St. Vincent de Paul Society  
Expanding the agency's refrigeration capacity

\$25,000 / Feeding Northeast Florida  
Operational support and implementation of a new  
food distribution model in Northeast Florida

**Nonprofit Capacity Building » \$51,900**

\$20,000 / Community Hospice of Northeast Florida, Inc.  
Fiscal agent for St. Johns Volunteers' challenge grant  
which will support public awareness and non-profit  
capacity building activities

\$7,000 / Nonprofit Center of Northeast Florida, Inc.  
Expanded services for nonprofits located at the beach

\$2,000 / Association of Fundraising Professionals  
Support Planet Philanthropy 2015's Educational Track  
for Donor Relations

\$3,000 / BASCA, Inc.  
Certificate in Leadership Practice course at Rollins College

\$3,900 / Children's Museum of St. Johns, Inc.  
Strategic plan and board development

\$1,000 / Florida Nonprofit Alliance  
Annual membership dues for fiscal year 2015

\$5,000 / ICARE  
Expenses toward 20 leaders attending a  
leadership conference

\$5,000 / Live For Today Foundation Inc.  
Production of a marketing video about the organization,  
the mission and what it means to "Live For Today"

\$1,500 / Local Initiatives Support Corporation  
Donor appreciation luncheon and tour

\$1,000 / Operation New Hope  
Support for Operation Reform

\$500 / Robinson's Addition Neighborhood Association  
Support for National Night Out

\$1,000 / Rotary Club of Amelia Island Sunrise  
Support for Amelia Island Third Annual International  
Wine & Food Tasting

\$1,000 / Salvation Army of Clay County  
Sponsorship benefitting Clay County programs

**Philanthropy » \$62,500**

\$1,000 / Women's Giving Alliance  
Send two WGA Fellows to attend national conference

\$51,500 / Support the 2015 Weaver PI Class

\$10,000 / Council on Foundations  
Membership dues

**Poverty » \$93,500**

\$10,000 / Dignity U Wear Foundation, Inc.  
Support for developing a new Clothing Closet  
for Putnam County Schools.

\$57,500 / Family Foundations of Northeast  
Florida, Inc.  
Support the '1000 in 1000' Program

\$26,000 / Dignity U Wear Foundation, Inc.  
Storm damage repair

**Veterans » \$9,000**

\$7,000 / Putnam Habitat for Humanity  
Support improved housing conditions for Putnam  
County veterans

\$2,000 / Community Connections of Jacksonville, Inc.  
Match to Women's Giving Alliance grant, to support  
Women's Services Coalition of North East Florida

**Strategy and Capacity » \$75,000**

Support research and strategic planning

**Women and Girls » \$25,000**

Support the WGA Quality of Life Index

**Grand Total » \$1,164,700**

The Community Foundation...  
really *understands the needs* of the  
community, and which organizations can  
*help propel solutions*. They're a  
great broker for the community  
*between assets and action.*

- Rena Coughlin, CEO, Nonprofit Center  
of Northeast Florida, Inc.

**Stronger Together:  
The Nonprofit Center of Northeast Florida**



**NonprofitCenter**  
of Northeast Florida

Connect • Strengthen • Advocate

Just as individual fibers are strengthened when woven together, our community's 1000+ nonprofit agencies are better because of the Nonprofit Center of Northeast Florida. On behalf of our donors, we've championed a strong, efficient, responsive nonprofit sector and supported the Nonprofit Center since its inception in 2002.



**What the Nonprofit Center  
Does for Nonprofits**

Every organization needs resources to help manage the complicated issues of running a business, evaluating progress, and communicating their value. This is where the Nonprofit Center plays a vital role by offering staff training, professional development workshops, peer group convening, mentoring, consulting, and specialized online resources.



**What the Nonprofit Center Does  
for the Community at Large**

Need to know what agencies provide a particular service and want it narrowed by zip code or program area? The Nonprofit Center has an interactive map known as The Link ([www.theNonprofitLink.org](http://www.theNonprofitLink.org)) that can provide those answers.

Searching for information about the nonprofit community's economic impact or range of services? Every two years the Nonprofit Center releases a *State of the Sector* report. If you're interested in what's happening to nonprofits on the state level, the NPC is a proactive, nonpartisan voice for the region.

**New Opportunities**

The Nonprofit Center has been an energetic partner in our work at the Beaches. Following our research into the barriers to providing greater services to those in need near the coastline, we were able to fund the Nonprofit Center to begin working more closely with those Beach-serving agencies.

Our newly established Beaches Community Fund provided an additional grant, establishing the Eleanor Ashby Leadership Series to convene Beaches-area agencies on a regular basis, and in just a few short months, the Nonprofit Center has recorded a dramatic uptick in involvement and interest, with good forward momentum for coordinated work in the future.



**Where The Community  
Foundation Adds Value**

We provide an operating grant each year so the Nonprofit Center has adequate foundational funding while it increases membership and expands fee-for-service activities. With generous support from the Jessie Ball duPont Fund, we have collaborated with the Nonprofit Center on initiatives such as the Reflective Practice Summits. It helps nonprofits hone their focus on important sector-wide issues like board diversity, and the Community Coaches program, where skilled individuals are recruited, trained, and then paired by the Nonprofit Center to provide organizational and capacity development to nonprofits, most often through one-on-one mentorship with executive directors.

We also helped establish the Moving Forward Together Initiative to heighten awareness of the importance of the nonprofit sector through a public relations campaign.

We're particularly proud that the Nonprofit Center Board of Directors chose to establish the Nonprofit Center of Northeast Florida Endowment at The Community Foundation. This fund will help ensure sustainability for this vital umbrella organization.







## Family Foundations '1,000 in 1,000': When a community conversation about poverty can bring about *real change*

Tackling the challenge of family poverty takes research, knowledge and resources. When the Jessie Ball duPont Fund gathered community leaders to address the issue in 2006, we gladly joined the inaugural conversation on Building Assets of People, Families and Communities.

What grew out of that meeting was a very specific effort, funded by the Jessie Ball duPont Fund and the City of Jacksonville, to research, create and implement two pilot programs, resulting in the identification of nine pivotal assets that lift families out of poverty.

The success of those pilots led to the 2015 launch of '1,000 in 1,000: Moving 1,000 people out of poverty every 1,000 days.' Coordinated by Family Foundations, '1,000 in 1,000' is a multi-faceted approach to improve the lives of impoverished children by helping their families build the human, financial and social assets to ensure self-sufficiency.

Taking this work to scale involves many community partners, and we've been actively involved as part of the 1,000 in 1,000 leadership since its inception. In 2015, we added our financial resources and leveraged others' to support two key '1,000 in 1,000' components specifically targeted to helping single mothers.

- **\$33,000** We were able to bring The Chartrand Family Fund's support for quality daycare for 40 children for six months until their moms qualified for a state voucher—allowing them to work or go to school.
- **\$115,000** We matched \$57,500 of Foundation discretionary funds to a \$57,500 grant from the Delores Barr Weaver Fund to provide a matched savings account to be used for job training to assist

with obtaining self-sufficient employment. Client savings are matched by \$2 (\$1 Federal funds + \$1 private funds from this grant) for every \$1 saved by client, up to \$2,000 for a total of \$6,000 for training.

We are encouraged by the initial results of this program, which has at its core a collaborative framework that we wholeheartedly endorse. An independent evaluation identified that the program is producing a \$16.23 to \$1 return on investment, and it recently received the Partnering with a Purpose Award sponsored by the Alliance for Strong Families and Communities in partnership with the Kresge Foundation.

For more information on the program, visit [www.familyfoundations.org](http://www.familyfoundations.org)



## Launching the Beaches Community Fund

How does a major new collective funding effort come to be? Increasingly, it is the confluence of many aspects of philanthropy—interested donors working alongside grantmakers and nonprofit organizations, often working hand in hand with the public and private sector.

As a community foundation, we have had the unique opportunity to lead a number of these initiatives—such the groundswell to support the underserved along the Northeast Florida coastline which became the Beaches Community Fund.



**2013**

We brought a group of Beaches residents together to form a Beaches Advisory Council, for the purpose of sharing knowledge, providing advice and being an ambassador. Our grantmaking staff convened nonprofit organizations, churches and individuals to learn more about relevant issues, and created a preliminary inventory of service providers.

After a year of gathering data, soliciting information from more than two dozen organizations and religious institutions, the Beaches-area focus was narrowed to three topics:



**2012**

Donors expressed concern about underserved populations of poor and working poor families within the shadow of some of the most highly desirable beachfront—we began committing staff time to better understand the service area needs at the beach and donor appetite for a Beaches-area initiative.



**2014**

While the grantmaking staff continued to monitor service needs at the beach, TCF Donor Services staff worked with Trustees Martha Baker and Tracey Westbrook to gauge potential Beaches donors interest in and appetite for a beaches giving circle.

They prepared learning agendas and reviewed data collected by the Foundation's grantmaking staff to better orient potential donors to the opportunities for strategic philanthropy.



**2015**

The giving circle to be known as the Beaches Community Fund was officially established. Twenty-five charter households created the fund by committing \$10,000 a year for three years to address identified needs.

They established a grantmaking committee to review the areas of need to be recommended to the full membership in the fall. At the same time, we made a grant from The Community Foundation discretionary funds to the Nonprofit Center of Northeast Florida to provide a series of workshops and networking opportunities over the summer for Beaches-area nonprofit organizations.



**October 2015**

The Beaches Community Fund made their first grants:

- \$10,000 to the Nonprofit Center to continue providing capacity building workshops and networking opportunities to nonprofits at the Beach
- \$75,000 to BEAM to support a new Beaches Community food bank at the 7North facility



Spotlight: *Helen Short*

Helen Short is mindful about her giving. Arriving in Jacksonville 20+ years ago as a Vistakon/Johnson & Johnson executive, she has fully embraced her adopted hometown— not only by giving now for current needs, but by being deliberate about giving later.



She credits Leadership Jacksonville and The Community Foundation for opening her eyes to the needs and opportunities that exist here. In 2006, she became involved with the Women’s Giving Alliance, and served as WGA Grants Committee chair for two years as well as the Steering Committee for a number of years.

Helen has not one, but two planned gifts with The Community Foundation. She endowed her Women’s Giving Alliance membership because ‘I wanted to be associated with WGA forever.’ And she’s also

included The Community Foundation in her estate plan by setting up a charitable gift annuity for her sister.

“My sister and I took different paths in our educations and careers. She is a personal chef, running her own business, but doesn’t make the kind of money that would allow her to have more leisure time as she ages,” Helen remembers. “I thought this would provide some ‘extras’ without making it awkward, and get my estate plans started as well.”

“*This is my home now.* When you realize that *you have something to give back*, that’s when it really makes sense to *connect to the community* through The Community Foundation.”

The charitable gift annuity provides Helen’s sister with a regular source of income during her lifetime, and the residual will create an unrestricted fund at The Community Foundation to address the most important issues facing Northeast Florida. For now, Helen is leaving the planned purpose for her bequest very open.

“What I’ve learned is, needs change,” she notes. “And if you lock in the destination for your dollars, there may come a time when the issue or the grantees have changed. I feel like, with great management and trustees, TCF will be in the best position to judge where the needs will be when I am long gone.”

Not that Helen takes a laissez-faire approach to her current charitable giving. She and husband Michael Monaghan are inaugural members of the Beaches Community Fund, an effort she’s supported since first hearing about the needs at the Beaches. She is also Treasurer and Board Member for Mission House and a member of the University of Florida Foundation board. Helen is a hands-on philanthropist, and loves that Northeast Florida welcomes her involvement.

LEGACY SOCIETY MEMBERS

- James Ade  
Sybil B. Ansbacher  
Bailys/Rein Families  
Martha Frye Baker  
Ann McDonald Baker  
Lloyd Bell  
Rhonda Benizzi  
Sallie Townsend Benson  
Eleanor Blanchart  
Arthur R. and Marvis Anne Boccieri  
Jordan Bock  
Katherine Bowen  
Mary and Bruce Bower  
William D. and Catherine O. Brinton  
Thomas N. Brown  
J. Shepard, Jr. and Mary Ann Bryan  
J. F. Bryan, IV  
G. Howard Bryan  
Patricia E. Burke  
Sandra S. Burnaman  
James and Mary Burt  
Lillian E. Cannon  
Mary F. Carter  
Arch W. and Lo B. Cassidy  
Gary and Nancy Chartrand  
Edward and MaryAnne Cipperly  
Dale L. Clifford  
Howard C. Coker  
Stephanie Cost  
Donald Cottrell  
Claudia C. Crawford  
Florence Davis  
Robert D. and Isabelle T. Davis  
Stephen E. and Suzanne C. Day  
Betty L. Donahue  
Dorothy Simpson Dorion  
Barbara J. Drake  
Helga Dube  
DuBow Family Foundation  
Cynthia G. Edelman  
Robert and JoAnn Crisp-Ellert  
Julia Munroe McArthur Ellis  
Peter Elsaesser  
A. Ross and Cora B. Evans  
Dr. Ronald P. Evens  
Diane Falconetti  
Michael and Linda Fisher  
Betty Francis and Ray Walshe  
Crystal L. Freed  
Nat and Doris Glover  
Suzanne Gatling Godwin, MD  
Gordon Goede
- Susan Golden  
Doris Goldstein  
Margaret Gomez  
Alex and Caroline Graham  
Richard and Jean Gray  
Laurence and Carol Hall  
Margaret Carolyn Hall  
Martha Hammock  
Barbara H. Harrell  
William K. and Joanne B. Hatcher  
Robert and Elizabeth Haven  
Cris P. Hayes  
John T. Hayt  
Janet S. Healy  
Amy Heimann  
Lindsay D. Helms  
M. Clare Herald  
Bruce and Judy Homeyer  
Patricia Horowitz  
Linda L. Hossenlopp  
Patricia Howell  
Marie L. Inge  
William O. Inman, III  
Hugh H. Jones, Jr.  
Martha A. Jones  
Morton and Delores Kesler  
Gladys L. Kirkland  
James V. and Susan Knutzen  
Blanche and Steven Koegler  
Aaron Burton and  
Mary Lou W. Krosnick  
Adelaide Krueger  
Anthony S. and Virginia Y. Kurlas  
Edward W. and Helen M. Lane  
Kathleen Langford  
Joseph V. and Victoria Lauricella  
Laura Lee  
Allen and Sharon Lennon  
Gary and Susan Lewis  
Paula L. Liang  
Rutledge Liles  
Hal L. Lynch  
Wilford C. and Eleanor P. Lyon  
Boyd Lyon  
Ruth Townsend Manning  
Jim Mathas  
Marilyn Mayse  
W. Gary McCalla  
Frances McCurry  
Nancy M. McDonald  
Frank McGehee  
Thomas R. and Delia H. McGehee

We are indebted to the forward-thinking donors who have established endowed funds and/or included The Community Foundation in their estate plans. With their thoughtful planning, they have chosen to help shape their communities, even after they are gone. We are honored to work with these donors, their professional advisors and their heirs to carry out their philanthropic wishes.

- Donald and Terri McIntire  
Nadia Lamb Mead  
Fred Melber  
Gerald Mitchell  
James H. Montgomery  
Joan K. Moore  
Walter Moore  
Linda Crank Moseley  
Eleanor Murlasits  
Sherry Murray  
Evelyn Hall Hughes Nehl  
Robert and Barbara Nellson  
Charles M. Neviaser  
Joan W. Newton  
Robert and Indu Nickerson  
Frank V. Oliver  
Grace Osborn  
Duane and Susan Ottenstroer  
Nancy J. Overton  
Anne Pajcic  
Sallyn Pajcic  
Grady and Rebecca T. Parker  
John R. and Jane K. Parkyn  
Lydia M. Payne  
Marion Carson Persons  
John S. Peyton  
Carolyn Phanstiel  
Julia and Charles Pickren  
William Rein and Family  
John L. Reiss  
Barbara Lane Resnick  
J. Stephen Risley and  
Dorothy J. Risley  
Ann K. Robas  
Marian J. and Gordon A. Roberts  
Charlotte Robuck  
George Rowe  
Kenneth and Gail Rowles  
Kim Rutkowski  
Susan Remmer Ryzewic  
Tom Salisbury  
Norwood Sandifer  
Frieda Sawyer  
William and Peggy Corbin Scheu
- Robert and Judy Schnitzer  
Ryan A. Schwartz  
Lonette D. Seaton  
Ina Richter Shainbrow  
A.L. and Ruth Shantz  
Dorothea Shaw  
Robert T. and Carol R. Shircliff  
Helen E. Short  
Laine S. Silverfield  
Ann H. Sims  
Dr. Richard and Ann Skinner  
Harold “Bud” K. Smith  
David A. and Linda B. Stein  
Constance Stumin  
I.M. and Hazel Sulzbacher  
Julia W. Taylor  
Betty Armstrong Taylor  
James S. and Nancy B. Taylor  
Josephine Taylor  
Fredric and Janice Teich  
Marion Tischler  
Larry and Monica Tremonti  
W. Glenn Turner  
John D. and Mary Jane Uible  
Carl Utter  
Jim and Joan Amery Van Vleck  
George W. and Mary Elizabeth Varn  
W. Lester and Marjorie Varn  
Jane Watts  
J. Wayne and Delores Barr Weaver  
Carol J. Weldon  
Barbara C. Wenger  
Tracey Westbrook  
Beth J. Sumner Wiggins  
Linda F. Wilkinson  
Arthur L. Williams  
Jay T. and Ruth Winn  
The Winston Family Foundation  
Mary B. Winston  
Ellen Wiss  
Bernie and Gail Yvon  
Anonymous ( 4 )



# Professional Advisory Councils

## Amelia Island Council

Kristen D. Drake, Esq., Law Offices of

Kristen D. Drake, P.A., Chair

Lee Ann Buchanan, Esq., U.S. Trust, Bank of America  
Private Wealth Management

Lori L. Chism, Esq., Rogers Towers, P.A.

Timothy Flanagan, Esq., Purcell, Flanagan,  
Hay & Greene, P.A.

W. Henry Hurst, CPA, The Hurst Company CPAs

Kathryn Knee, Esq., Law Office of Kathryn Knee

Dawn Lunt, Dawn A. Lunt, Inc., Accounting and Tax Service

Nicola Nichol, CFA, Financial Strategies of Amelia

Jaret Rice, CPA, The Hurst Company CPAs

Donald Robert "Rob" Weeks, CPA, Doss, Weeks, CPAs

## Beaches Council

Clay B. Tousey, Esq., Fisher, Tousey, Leas & Ball P.A., Chair

Dan W. Armstrong, Esq., Law Offices of  
Dan W. Armstrong, P.A.

Anne Buzby-Walt, Esq., Fisher, Tousey, Leas & Ball P.A.

Christopher Dunne, CPWA, UBS

Beverly H. Furtick, Esq., Fisher, Tousey, Leas & Ball

Andrew B. Hartline, CFI, CIMA, Northern Trust

Sam Hall, Morgan Stanley

Brian J. Hershorin, Esq., Purcell, Flanagan,  
Hay & Green, P.A.

William G. Hillegass, CPA, Hillegass,  
Chepenik & Hood, CPAs

Archie O. Jenkins, III, Merrill Lynch Private Client Group

T. F. Jenkins, Merrill Lynch Private Client Group

William B. McMenemy, J.D., CPA, Donahoo & McMenemy

Chris Patterson, CPA, Patterson CPA Group

Kristin G. Pirris, LUTCF, CFP, Pirris Insurance  
and Financial Services

David E. Polovina, LTCP, Demetree Insurance Services

Teresa Radzinski, U. S. Trust

Peter Reynolds, CPA, The Griggs Group

Dennis Rosa, The Lighthouse Group at Morgan Stanley

Michael Ruble, BB&T Wealth Management

Jamie Seim, Wells Fargo Advisors

Carrie Stinchfield, Raymond James

Robert "Bo" Trudeau, JD, LLM, Purcell, Flanagan,  
Hay & Green, P. A.

Holly Tyrell, Legacy Trust Family Wealth Offices

Glenn Ullmann, CDFA, Ullmann Financial

James V. Walker, Esq., Walker Law Group, P.A.

Christopher "Kip" Zebroski, Wells Fargo Advisors

## Downtown Council

Donald Wright, Esq., Rogers Towers, P.A. Chair

Willis M. Ball, Merrill Lynch Global Private Client Group

Harris L. Bonnette, Jr., Esq., Fisher, Tousey,  
Leas & Ball P.A.

Pamela Breault, Esq., IRS

Lonnie Brooks, CLU, CFP, ChFC, Financial  
Design Associates

Jean Coker, Esq., Jean C. Coker, P.A.

Daniel Edelman, CPA, Dixon Hughes Goodman, LLP

Michael Fisher, Esq., Fisher, Tousey, Leas & Ball P.A.

Robert Franskousky, CFP, Compass Financial Group

W. Robinson Frazier, Esq., Frazier & Frazier,  
Attorneys at Law

John Grimsley, Esq., Grimsley, Marker & Iseley P.A.

Michael W. Halloran, AEP, CFP, CLU, ChFC,

Northwestern Mutual Financial

Mark Hand, CPA, S. Mark Hand & Associates P.A.

Matthew T. Harrod, Esq., Brennan, Manna & Diamond, LLC

Jeffrey Hartman, Sawgrass Wealth Management

F. Reid Hartsfield, IV, CFP, BB&T Wealth Management

Jason E. Havens, Esq., Holland & Knight

Jonathan Hay, Esq., Purcell, Flanagan, Hay & Greene, P.A.

William Howey, CLU, ChFC, Principal Financial Group

David Howie, CPA, Masters, Smith & Wisby, CPAs

Charles D. Hyman, Charles D. Hyman & Company,

Board of Trustees Liaison

Robert L. Jones III, Esq., Blackburn & Company, L.C.

Mary Biggs Knauer, CTFA, CCTS, AIF, Salvus  
Wealth Management

Matthew Kwartler, CFP, Fidelity Investments

John Magevney, Abbot Downing

Don N. Merritt, Jr., Bernstein Global Wealth Management

James A. Nolan, III, Esq., Gray|Robinson

H. Thomas Platt, III, Live Oak Family Offices, LLC

Sarah T. Ragsdale, UBS Financial Services, Inc.

Lisa Strange Weatherby, CIMA, CIS,

Wells Fargo Advisors

Clay Tousey, III, Esq., Fisher, Tousey, Leas & Ball P.A.

Elizabeth R. Williams, CTFA, Williams Personal

Financial & Fiduciary Services, LLC

## Saint Augustine Council

Tance E. Roberts, Esq., Clark & Roberts, PLC, Chair

Louise Anderson, CPA, Carr, Riggs, & Ingram, LLC

Cathleen A. Burns, MBA, CFP, St. Augustine

Investment Management

Chris Draughon, CFP, First Coast Financial Advisors

Margaret Greer Edmiston, CPA,

Edmiston & Edmiston, P.A.

Jeffrey Helms, CFA, First Coast Financial Advisors

Tiffany A. Holbrook, JD, BB&T Wealth Management

Gabriel W. Hynes, CLTC, The Bailey Group

Andrew Jackson, JD, LL.M., Jackson Law Group, P.A.

Kevin Kane, Esq., Gunster, Yoakley & Stewart, P.A.

Sean W. Kelley, Esq., Kelley & Kelley, P.L.

Kenneth R. Kresge, CPA, Kresge,

Platt & Abare, CPAs

Peter O'Brien, CFP, CIMA, Morgan Stanley

Benjamin Platt, CPA, CFF, MBA, Kresge,

Platt & Abare, CPAs

Teresa Radzinski, U. S. Trust

Robert "Bob" Roberts, Retired

John D. Rowe, CPA, Carr, Riggs & Ingram, LLC

Joseph W. Sharp, Esq., Ret. IRS

Tito S. Smith, Esq., Rogers Towers, P.A.

Michael A. Siragusa, Esq., Upchurch,

Bailey and Upchurch, P.A.

Arthur L. Stern, Esq., Law Offices of Arthur L. Stern

Donna Guenther Thorland, Life Management Advisors

Donald W. Wallis, Esq., Upchurch,

Bailey and Upchurch, P.A.

Fredrick J. Wainio, Jr., CPA, Neville, Breidenstein,  
Wainio, CPA's

“  
To me, it's the *most important*  
*service* performed by The  
Community Foundation—*helping*  
*people to understand how*  
*to give money, and why.*  
”

- Don Wright, Rogers Towers, P.A.

## Spotlight: Don Wright

Attorney Don Wright can't remember how long he's led The Community Foundation's Downtown Professional Advisory Council (PAC). Suffice it to say, he has been the bellwether for the quarterly assembly of attorneys, CPAs, investment advisors and financial planners for many years, and a genuine partner of The Community Foundation the entire time. He's generous with his time and expertise, and works closely with Vice President for Development John Zell to make sure the meetings are worthwhile.

"Getting involved with The Community Foundation all those years ago really educated me," he remembers. "I knew that creating one's own foundation could be a great thing, but it also can be expensive and time-consuming.

I've learned all the different ways my clients could use The Community Foundation; a lot of those services might be the right solution for someone not willing to take on the full responsibilities of a private foundation."

Don enjoys connecting clients who may only have a vague idea about charitable giving to TCF. He admires the organization for its ability to help clients define their charitable goals and envision 'what could be' with structured, strategic philanthropy.

Years ago, he was captivated by a PAC presentation from Tom Nehl, a successful Jacksonville businessman whose passion for community theater led him to establish a fund at The Community Foundation just to support community theater. "His enthusiasm was so contagious," Wright remembers. "I often point to that story and remind people that there is incredible joy in giving now vs. at your death."

Don appreciated when the Downtown PAC was asked last summer to discuss where TCF should focus its discretionary grantmaking. "It was a great opportunity for people who are in touch with advisors to express their thoughts," he recalls. "It heightened our awareness of the needs of the community and motivated us to ask our clients how they would like to give back to the community. We have been inspired to make such a discussion a regular part of our interaction with clients. All of us on the PAC have learned so much more about giving by being a part of this great association with TCF."





# Funds at The Community Foundation

## Organizational Endowments

100 Black Men of Jax. Bernard V. Gregory -Scholarship Fund	1997
The Arc Jacksonville Endowment	2003
Attending Staff Foundation Endowment Fund	1990
Barnabas Center Endowment	1989
Boys and Girls Club of Northeast Florida Endowment	1991
The Cultural Council of Greater Jacksonville Endowment Fund	1999
Douglas Anderson School of the Arts Endowment	1989
Florida Council on Economic Education Jacksonville Endowment	2009
Florida Theatre General Endowment Fund	1999
Florida Theatre Preservation Fund	1993
Gateway Girl Scout Council Endowment Fund	1996
Greenscape of Jacksonville, Inc. Endowment Fund	1992
<b>Elizabeth Edgar Hall Endowment</b>	<b>2015</b>
HandsOn Jacksonville, Inc. Training and Education Fund	1990
<b>The Heal Foundation Endowment</b>	<b>2015</b>
Jacksonville Public Education Fund Endowment	1991
Jacksonville Symphony Association Endowment Fund	2009
Jacksonville Volunteer Lifesaving Corps Second Century Fund	2013
JAGA Charitable Trust Endowment	2014
Junior League of Jacksonville, Inc. Endowment	1997
The L.S.S. Endowment Trust	1989
Museum of Science and History of Jacksonville General Endowment	1994
Ralph and Elizabeth Mundell Endowment	2007
Nonprofit Center of Northeast Florida Endowment	2010
Pine Castle Endowment	1990
Planned Parenthood of N Florida in Support of Men's Health	2011
Planned Parenthood of N Fl End in memory of Dr. Doris Carson	2000
St. Johns River Legacy Endowment	2012
St. Vincent's Medical Center Endowment	1989
Tree Hill Endowment	1991
United Way of Northeast Florida, Inc. Endowment Fund	1991
Very Special Arts Florida-Jacksonville Fund	1994
Voices for Children Endowment	2007
<b>Women's Club of Jacksonville Endowment</b>	<b>2015</b>
World Affairs Council - Jacksonville Endowment	2014
Christy Birong Youth Leadership Jacksonville Endowment	1990

## Organizational and Designated Endowments

An Organizational or Designated Endowed Fund supports a specific non-profit organization, school or religious institution in perpetuity. Individuals or the nonprofit itself may establish this fund.

## Designated Endowments

Claudia Adams Barr Endowment	2014
Sybil Barnett Ansbacher Women's Giving Alliance Endowment	2011
Arc Village Endowment Fund	2014
Ann McDonald Baker Women's Giving Alliance Endowment	2010
Martha Frye Baker Women's Giving Alliance Endowment	2014
Frank Barker Memorial Fund	2011
Barnabas Endowment Fund	2013
Beavers/Burt Endowment Fund	1998
Kitty R. Berry Memorial Fund	1991
Betty Griffin House Endowment	2007
Blanchart Family Endowment Fund	2011

Blanchart Family Endowment Fund for L'Arche Harbor House	2011
Mary and Bruce Bower Alexis de Tocqueville Endowment	2000
The Endowment for The Bridge of Northeast Florida	2007
G. Howard Bryan Endowment Fund	2006
Shep and Mary Ann Bryan Endowment/ Daughters of Charity	1999
Shep and Mary Ann Bryan WJCT Endowment Fund	2001
<b>Patricia E. Burke Women's Giving Alliance Endowment</b>	<b>2015</b>
Sandra Burnaman Women's Giving Alliance Endowment	2014
Camp Boggy Creek Campership Fund	2014
Lillian I. Cannon Endowment for The Bridge	2010
<b>Mary F. Carter Women's Giving Alliance Endowment</b>	<b>2015</b>
Cathedral Arts Project Endowment	2013
Nancy Chartrand Women's Giving Alliance Endowment	2010
Citizens for a Scenic Florida Endowment Fund	1999
<b>Dale Lothrop Clifford Women's Giving Alliance Endowment</b>	<b>2015</b>
W. Earle and Phyllis Collins Crank Memorial Endowment	1995
Community Appearance and Scenic Enhancement Fund	1999
Community Connections Endowment	2007
Community Hospice Patient Care Endowment	2007
Comunita Cenacolo America Endowment	2007
Continental Societies Inc., Jacksonville, FL Chapter Endowment Fund	2006
Stephanie Cost Women's Giving Alliance Endowment	2014
<b>Cummer Museum Art Connections Endowment</b>	<b>2015</b>
Robert D. and Isabelle T. Davis Endowment	2009
The DESC Endowment	2014
Dorothy S. Dorion Women's Giving Alliance Endowment	2013
Douglas Anderson School of the Arts Fellowship Endowment	2007
Barbara J. Drake Women's Giving Alliance Endowment	2011
Dreams Come True Client Dreams Endowment	2007
Dreams Come True Endowment Fund	1992
Cynthia G. Edelman Women's Giving Alliance Endowment	2013
Endowed \$10,000 Event Grant est. 2015 by Delores Barr Weaver	2014
David & Bonnie Foster Fund for St. Augustine Music Festival	2014
<b>Crystal L. Freed Women's Giving Alliance Endowment</b>	<b>2015</b>
Gateway Community Services Transitional Housing Endowment	2007
Dr. Maurice H. Givens and Dr. David E. Rogers Fund	1992
Doris Sussman Goldstein Women's Giving Alliance Endowment	2012
Margaret Gomez Women's Giving Alliance Endowment	2012
R.E. and J.M. Gray Fund	2000
Greenwood School Endowment Fund	2005
Barbara Hicklin Harrell Women's Giving Alliance Endowment	2010
Cris Hayes Women's Giving Alliance Endowment	2014
Janet S. Healy Women's Giving Alliance Endowment	2013
James Hehn Memorial Endowment Fund	2009
Lindsay D. Helms Women's Giving Alliance Endowment	2012
M. Clare Herald Endowment Fund	2010
David M. and Ann C. Hicks Tocqueville Endowment	2008
Hope Haven Client Scholarship Endowment	2007
Linda L. Hossenlopp Women's Giving Alliance Endowment	2014
Hubbard House Endowment	2007
Hubbard House Endowment Fund	1990
Jacksonville Children's Chorus Chorister Scholarship Endowment	2007
The Jacksonville Symphony Endowment	1992
Jewish Community Alliance Endowment	1995
Jewish Family & Community Services Endowment	2007
Jacksonville Health Education Program Borland Library Fund	2012
<b>Martha A. Jones Women's Giving Alliance Endowment</b>	<b>2015</b>
Albert and Viola Kissling Endowment Fund	1990
Valdemar Joost Kroier Endowment Fund	1986
Valdemar Joost Kroier Endowment Fund II	1990
Lamp of Jesus Endowment Fund	1979
Helen and Edward Lane Endowment Fund	1997
Helen Murchison Lane Women's Giving Alliance Endowment	2010

Helen and Edward Lane Alexis de Tocqueville Endowment Fund	2000
Helen and Edward Lane Endowment Fund II	1997
Helen and Edward Lane Endowment Fund III	1998
Kathleen Langford Women's Giving Alliance Endowment	2014
Paula L. Liang Women's Giving Alliance Endowment	2014
Mary J. Lindsley Fund	1992
Eleanor and Wilford Lyon WJCT Endowment	2000
Ruth Townsend Manning & Sallie Townsend Benson Endowment Fund	1998
James L. Mathas Foundation	2011
Jane Atherton Mawdsley Fund	1992
Mayse-Turner Fund for Public Performance of Classical Music	2008
Mayse-Turner Fund for Anglican Hymnody	2008
Nancy M. McDonald Endowment	2005
Ronald McDonald House Endowment	2007
Delia H. and Thomas R. McGehee Endowment Fund	1989
Nadia Lamb Mead Endowment	1995
Micah's Place Endowment	2007
<b>MOCA Educator for Family and Children's Programs Endowment</b>	<b>2015</b>
Sherry Murray Women's Giving Alliance Endowment Fund	2010
Nassau County Council on Aging Building Fund	2014
Joan W. Newton Women's Giving Alliance Endowment	2013
Frank V. Oliver, Jr. Fund for Putnam County Bread of Life	2010
Frank V. Oliver, Jr. Fund for Putnam County Gator Club	2010
Frank V. Oliver, Jr. Fund for Putnam County Humane Society	2010
Frank V. Oliver, Jr. Fund for Rodeheaver Boys Ranch, Inc.	2010
Frank V. Oliver, Jr. Fund for St. Johns River State College	2010
Frank V. Oliver, Jr. Fund for Putnam County Elfs for Kids	2010
One Jax Endowment	2007
<b>Opera Jacksonville Fund</b>	<b>2015</b>
PACE Center for Girls Jacksonville Endowment	2007
<b>Sallyn S. Pajic Women's Giving Alliance Endowment</b>	<b>2015</b>
Quigley House Endowment	2007
Richard A. Reid / First Guaranty Memorial Fund	2002
Robert E. Lee High School Alumni Association Fund	2010
Susan Remmer Ryzewic Women's Giving Alliance Endowment	2010
A. L. and Ruth S. Shantz Trust	1981
Robert T. and Carol R. Shircliff Charitable Endowment	1988
Helen Short Women's Giving Alliance Endowment	2011
Laine S. Silverfield Women's Giving Alliance Endowment	2012
<b>Ann H. Sims Women's Giving Alliance Endowment</b>	<b>2015</b>
Harold K. Smith Charitable Fund for Designated Grants	2007
Harold K. Smith Playhouse Endowment	1995
<b>The Somebody Cares Fund</b>	<b>2015</b>
<b>St. Vincent's Clay County Women &amp; Infants Pavilion Endowment</b>	<b>2015</b>
David A. Stein Arc Village Endowment	2014
Linda B. Stein Women's Giving Alliance Endowment	2013
I. M. Sulzbacher Center for the Homeless Endowment	2007
I.M. & Hazel J. Sulzbacher Endowment for the I.M. Sulzbacher Center	2004
Julia Taylor Women's Giving Alliance Endowment	2010
The Community Foundation for NE Fla Operations Endowment	2013
Marion E. Tischler Women's Giving Alliance Endowment	2013
Mary Elizabeth Uible Morris Unrestricted Endowment/Bolles	2000
John D. and Mary Jane Uible Endowment/MOSH	1998
John D. & Mary Jane Uible Endowment/Ronald McDonald House	1998
Joan Amery Van Vleck Fellowship Fund	2011
Joan Amery Van Vleck Women's Giving Alliance Endowment	2010
George Varn Endowment for the Museum of Science & History	1993
Volunteers in Medicine Endowment	2007
Kim Ward Women's Giving Alliance Endowment	2013
Cornelia and Olin Watts Endowment Fund	2000
We Care Jacksonville Endowment	2007
Delores Barr Weaver Women's Giving Alliance Endowment	2011
Webb Center Endowment	1991

<b>Carol J. Weldon Women's Giving Alliance Endowment</b>	<b>2015</b>
<b>Barbara C. Wenger Women's Giving Alliance Endowment</b>	<b>2015</b>
Tracey Westbrook Women's Giving Alliance Endowment	2013
The Clara White Mission, Inc. Endowment Fund	2006
The Endowment for Clara White Mission	2007
Jay T. and Ruth Lucile Winn Endowment	2011
Winston Family Art Ventures Endowment Fund	2011
<b>Ellen A. Wiss Women's Giving Alliance Endowment</b>	<b>2015</b>
The Endowment for WJCT	2007
Women's Center of Jacksonville Endowment	2007

**Award & Scholarship Funds**  
An Award or Scholarship Fund helps current and future students pursue education, professional development or other educational enrichment opportunities.

## Award Funds

Rachel Aides Scholarship Fund	2012
Douglas Anderson Teacher of the Year Award	1995
Independent Life C.G. Snead/J.F. Bryan, III Memorial Award	1996
Thad M. Moseley Endowment for Surgical Teaching	1996
Gary Smalley Memorial Fund	1999
USS Monterey Fund	1990
Wells Fargo Scholarship Fund	2000

## Scholarship Funds

William Walker and John W. (Train) Anderson Scholarship Fund	1980
Willard O. Ash Endowment Fund	1994
Leslie Baker Memorial Endowment	1998
George Ballis Scholarship Endowment	2005
Bryan-Gooding Bethune Cookman Nursing Scholarship Endowment	2010
Jo and Paul Gallagher Family Endowment	2014
Zoe Gaudet Scholarship Fund	2006
John Hellbach Memorial Fund	2010
William O. and Elizabeth G. Inman Scholarship	1989
Jim and Linda King Scholarship Fund	2010
Kraft/Moore Family Scholarship Fund	1993
<b>Erica Lewis, Esq. Soccer Scholarship Fund</b>	<b>2015</b>
Benjamin William Lowe, Jr. Memorial Scholarship Fund	2007
Leonard Lee & Margaret Cox McLucas Athletic & Scholar Award	1991
Talona Mae & Fred William Melber Episcopal Scholarship Fund	2005
Byon M. Morris Charitable Fund II	1992
Emily B. Paulk Scholarship Fund	1992
Sam and Lydia Payne Scholarship Fund	2014
James Thomas Pickren Memorial Scholarship Fund	2002
The Dorothea B. Shaw Scholarship Fund	2007
Craig Speziale Memorial Scholarship	2014
St. Mark's Episcopal Day School Scholarship Fund	1989
Gabe B. Summers Scholarship Fund	1993
Uptown Civitan Scholarship Award Fund	2000
The Anina M. Walter Scholarship Fund	1993
Nan Parker Williams Scholarship Fund	2008
Burgman Winston Youth Orchestra Scholarship Fund	2004
Winston Family YMCA Campership Endowment	2007
<b>Bernie G. Yvon Memorial Fund</b>	<b>2015</b>



Donor Advised Funds

A Donor Advised Fund creates a charitable checking account which allows individuals or families to recommend grants to the nonprofit organizations, schools and religious institutions of their choosing.

Donor Advised Funds

Abdullah Family Endowment	2014
Abdullah Family Foundation Fund	2014
Christopher and Letitia Aitken Family Fund	2012
Norm and Ann Anderson Family Fund	2013
Appreciation of Christ Fund	2008
G. Turner Ashby Memorial Fund	2006
Atkerson Family Fund	2001
The Azalea Fund	2007
Bailys/Rein Family Charitable Fund	2005
Baker Family Advised Fund	2014
Martha and Tom Baker Family Fund	2013
Ann McDonald Baker Family Foundation	2003
Dr. Roy M. and Audrey Baker Family Foundation	1997
Ball Family Fund	1998
Christopher and Elizabeth Ball Advised Fund	2008
Hilton and Butler Ball Charitable Fund	2008
Norma S. and Hayes Basford Advised Fund	1998
Michael and Rebecca Bates Advised Fund	1997
<b>Beaches Community Fund</b>	<b>2015</b>
L. Andrew and Janie S. Bell Fund	1995
Florida Blue Foundation Fund	2006
Florida Blue Community Fund	2002
Art and Anne Bocchieri Advised Fund	2012
<b>Missy and Roland Boney Family Fund</b>	<b>2015</b>
Buford L. Bowen Charitable Fund	2013
Miller Bower Family Trust	1997
William D. and Catherine O. Brinton Advised Fund	1997
Leslie Jane Brinton Fund	2008
Leslie and Sol Brotman Fund	2001
G. Howard Bryan Advised Fund	2007
J.F. Bryan, IV Fund	1996
Peggy and J.F. Bryan Advised Fund	1999
Doris N. Carson Foundation for Family Planning & Women's Health	1992
Arch W. and Lo B. Cassidy Advised Fund	1993
Angelo and Olivia Cavallaro Advised Fund	1998
Cellar Family Foundation Fund	1997
Gary Chartrand Advised Fund	2006
The Chartrand Family Fund	2013
Gary and Nancy Chartrand Advised Fund	2013
Jeff Chartrand Advised Fund	2010
Nancy Chartrand Advised Fund	2011
Ed and MaryAnne Cipperly Seeds of Promise Endowment and Fund	2006
Robert M. and Ann H. Clements Fund	2012
Clontz Family Fund	2014
Fran Coker Memorial Educational Fund	2009
Current Family Advised Fund	2013
A.D. Davis Family Advised Fund / Robert Davis	1994
Robert D. and Isabelle T. Davis Family Advised Fund	2009
David and Tammy Davis Advised Fund	2014
Florence N. Davis Family Advised Fund	1995
Ed and Susan Doherty Advised Fund	2012
Drake Family Advised Fund	2011
Drummond/Falconetti Charitable Trust	2000
DuBow Family Advised Fund	1997
The Jessie Ball duPont Port St. Joe Capacity Building Fund	2007

Eartha M.M. White Charitable Fund	2003
Edelman Family Advised Fund	2007
Emerald Coast Theatre Fund	2012
Environmental Restitution Fund	1997
Eternal Difference Foundation Fund	2008
A. Ross and Cora B. Evans Advised Fund	1998
Eveleigh Trust Fund	2003
Dr. Ronald P. Evens Fund	2003
Michael W. and Linda M. Fisher Advised Fund	2003
The Florida BrAlve Fund	2008
Ginger & Gregory Forbes Charitable Foundation Fund	2005
David and Bonnie Foster Advised Fund	2008
Frankland Family Charitable Fund	2014
Ralph K. Frasier and Jeannine M. Quick-Frasier Advised Fund	2012
Mike and Crystal Freed Fund	2009
Meredith and Mark Frisch Advised Fund	2011
Eleanor J. Gay Advised Fund	2010
Geddes Family Advised Fund	2013
Gen W Now Fund	2013
Sheriff Nat Glover Endowment	1995
Margaret Gomez Advised Fund	2012
The Gooding-Bell Endowment	2005
The Henry and Lucy Gooding Endowment	2004
Alex and Caroline Graham Charitable Fund	2012
Alex and Caroline Graham Family Endowment	2012
C & H Graham Family Fund	2013
Iva and Gene Gray Memorial Endowment	2000
Renee Haas and John W. Westman Charitable Fund	2004
<b>Anne Hartje Memorial Fund</b>	<b>2015</b>
Hatcher Endowment	1991
Hayes Family Charitable Giving Fund	2005
Robert W. and Lindsay D. Helms Advised Fund	2000
Reedy and Philip Hickey Advised Fund	2011
William J. Hicklin, Jr. Advised Fund	1994
Robert and Margaret Hill Advised Fund	2011
Bruce and Judy Homeyer Charitable Fund	2003
Bruce and Judy Homeyer Fund for Excellence in Nursing	2013
Marshall Horowitz Memorial Fund	1992
Howell Family Endowment	2010
Evelyn H. Nehl Fund in Memory of John Steven(Jackson)Hughes	2000
Floyd K. Hurt Fund	1996
Hyman Family Advised Fund	1999
Jacksonville Visual Enhancement Fund	1998
Jennifer's Hope Fund	2012
Cyrus M. Jollivette Charitable Fund	2006
Matthew and Alexis Kane Family Fund	2014
Raphael M. and Molly Kelly Family Advised Fund	1989
Morton A. and Delores Kesler Foundation	1998
Krosnick Family Charitable Fund	2000
Krueger Family Charitable Fund	1994
Mr. and Mrs. Anthony S. Kurlas Family Advised Fund	2011
Mr. and Mrs. Anthony S. Kurlas Family Endowment	2011
<b>Lee Family Fund</b>	<b>2015</b>
Allen and Sharon Lennon Advised Fund	2012
LGBT Community Fund	2013
Wilford C., Jr. and Eleanor P. Lyon Advised Fund	1997
Mac Papers Fund	1980
Sarah Ball Mason Advised Fund	2009
Julia Munroe McArthur Charitable Foundation	1992
Marjorie and Patrick McEnerney Foundation	2001
Charles C. and Scott L. McGehee Fund	2006
Mac and Terri McGehee Fund	1987
Sutton and Debbie McGehee Advised Fund	2013
Merrill Lynch Employees' Philanthropic Endowment	2012
Merrill Lynch Employees' Philanthropic Fund	2010

<b>David and Monique Miller Family Fund</b>	
MKM Fund	
James and Anne Moseley Advised Fund	
Linda Crank Moseley Advised Fund	
Henry G. & Marguerite Motes Advised Fund	
Murray Family Gift Fund	
<b>My Village Project Community Fund</b>	
Nasrallah Family Advised Fund	
Tom Nehl Fund	
Neil Neighborhood House Auxiliary	
of St. Augustine, FL Advised Fund	
The Ottenstroer Charitable Trust	
Duane L. Ottenstroer Charitable Fund	
<b>John O. Parrish and Davy Mudd Parrish Advised Fund</b>	
Deborah Pass Durham Fund	
Danielle Payne Advised Fund	
Timothy D. Payne Advised Fund	
Paul Perez Advised Fund	
<b>Petway Family Foundation Fund</b>	
Phanstiel Family Advised Fund	
Weaver Philanthropic Initiative Class of 2015	
David L. and Deborah P. Pierson Advised Fund	
Poli Family Foundation Fund	
Price Family Advised Fund	
Quality Education for All Advised Fund	
Deborah Hicks Quazzo Charitable Fund	
Rein Family Charitable Fund	
Reinhold Family Foundation Matching Gift Program	
Remmer Family Foundation Fund	
C. Daniel and Julie F. Rice Donor Advised Fund	
The Charles E. and Dianne T. Rice Family Donor Advised Fund	
Steve and Dotty Risley Foundation	
Riverside Hospital Foundation Charitable Fund	
Robbins Nest Advised Fund	
Charlotte Haynes Robuck Endowment Fund	
The Rogaski Family Advised Fund	
Rogers Towers Charitable Fund	
Liz Rosenfeld Legacy Fund	
Nina and Neal Roth Advised Fund	
Rowe Family Charitable Fund	
Remmer Ryzewic Advised Fund	
San Martin Family Advised Fund	
Ryan A. Schwartz Advised Fund	
Henry and Betty Seissler Memorial Fund	
Robert T. and Carol R. Shircliff Advised Fund	
Silverfield Family Fund	
Sisisky Family Foundation Fund	
Richard G. and Ann F. Skinner Advised Fund	
Patricia M. Houlihan and Richard G. Skinner, III Fund	
Stanton College Preparatory School Fund	
David A. Stein Charitable Trust	
Brooke and Hap Stein Fund	
Beth Jarman Sumner Family Foundation Fund	
The Anne Elizabeth Suratt Advised Fund	
Ralph and Eileen Swett Foundation Fund	
John B. Towers Advised Fund	
Susan and Jim Towler Charitable Fund	
Tremonti Charitable Fund	
John D. and Mary Jane Uible Foundation	
Frank D. Upchurch, III and Katherine Upchurch Fund	
James and Joan Van Vleck Advised Fund	
George and Mary Elizabeth Varn Charitable Fund	
W. Lester and Marjorie Varn Charitable Fund	
The Ralph N. Walter and Anina M. Walter Charitable Trust	
Theodora D. and William H. Walton, III Advised Fund	

<b>2015</b>	Alfonzo G. Washington, Sr., African-American Leadership Fund	2004
2005	Mary V. and Frank C. Watson Advised Fund	1999
1999	Delores Barr Weaver Fund	2012
1994	<b>Delores Barr Weaver Legacy Fund</b>	<b>2015</b>
1983	Weaver Family Foundation Fund	2012
2014	J. Wayne & Delores Barr Weaver (VETS) Fund	2012
<b>2015</b>	Tracey Westbrook Family Fund	2009
2006	<b>Margaret and Putt Wetherbee Family Fund</b>	<b>2015</b>
1993	Eartha M.M. White Legacy Fund	2004
	Carlyn B. Winge Memorial Foundation	1997
2009	Sophie and Joe Witten Advised Fund	1996
1993	Womens' Giving Alliance	2002
1994	Chris Wood Family Advised Fund	2009
<b>2015</b>	YellowDog Advised Fund	2010
2013	Anonymous	2010
2011	Anonymous	2012
2011	<b>Anonymous</b>	<b>2015</b>
	<b>Anonymous</b>	<b>2015</b>

Field of Interest Funds

A Field of Interest Fund targets the needs in a specific area of community life, and entrusts The Community Foundation with the responsibility of selecting specific grant recipients.

Unrestricted Funds

An Unrestricted Fund allows The Community Foundation leadership to determine where the community's needs are greatest, and to concentrate resources to fulfill that effort.

Field of Interest Funds

Aging Adults

I. R. Bowen and Katherine H. Bowen Fund	2003
Grace H. Osborn Endowment	1994
J. Wayne and Delores Barr Weaver Senior to Senior Endowment	2009

The Arts

Art Ventures Endowment Fund	1990
J. Shepard, Jr. and Mary Ann Bryan Arts Endowment	2000
Dr. JoAnn Crisp-Ellert Fund	2007
Independent Life Minority Arts Award Fund	1992
Anne and Sallyn Pajcic Art Ventures Endowment	2011
Alynn Sharp Art Fund	2012
Ann McDonald Baker Art Ventures Award Fund	2014

Children

Jacksonville Children's Endowment	1993
-----------------------------------	------

Education

Peyton Early Literacy Endowment	2007
Quality Education For All Fund	2005
The RALLY JACKSONVILLE! Fund	2005
Quality Education for All Endowment Fund	2013

Health

Kenneth H. Millar, Jr., Memorial Fund (visually impaired children)	1993
Byon Morris Charitable Fund (men diagnosed with alcoholism)	1992
Esther Pope Memorial Endowment	
(persons diagnosed with or affected by HIV/AIDS)	1989



<b>Indigent</b>		
Donald and Terri McIntire Fund		2006
Simon J. Peabody Fund		1997
Robert T. Shircliff Discretionary Grantmaking Fund		1988
<b>Neighborhood Development</b>		
Bank of America Neighborhood Endowment Fund		1999
Jacksonville Neighborhood Endowment Fund		1998
<b>NonProfit Capacity</b>		
Jessie Ball duPont Reflective Practice Endowment Fund		2007
Reflective Practice Fund		2007
<b>Women &amp; Girls</b>		
WGA Pooled Grantmaking Fund		2002
Women's Endowment Fund		2001
<b>Putnam County</b>		
Frank V. Oliver, Jr. Endowment		2010
<b>Unrestricted Funds</b>		
Lois and Donald Cottrell Endowment Fund		1982
A.D. Davis Family Advised Fund - Lee Davis		1994
The Community Endowment Fund		2005
First Guaranty Bank & Trust Company Endowment		1991
Bernard V. Gregory Endowment Fund		1997
Independent Life Insurance Company Endowment		1995
Brady S. Johnston Charitable Fund		1987
Kathryn and Richard Kip Endowment Fund		1997
Thomas M. Kirbo and Irene B. Kirbo Charitable Trust		1990
Nancy Hazard McCreight Memorial Fund		1982
Frank and Ann McGehee Endowment		1997
<b>Grady C. and Rebecca T. Parker Endowment</b>	<b>2015</b>	
Marian J. and Gordon A. Roberts Fund		2005
Kathy Rude Charitable Fund		1983
Norwood H. and Mary Elizabeth Sandifer Endowment Fund		1986
Harold K. Smith Charitable Fund		1997
Jay and Deanie Stein Unrestricted Fund		2011
The Community Foundation Public Trust Fund		1988
The Community Foundation President's Discretionary Fund		1993
TRUJAX Fund		2014
John D. and Mary Jane Uible Endowment		1991
Venture Philanthropy Endowment Fund		1990
Arthur L., Jr. and Angela H. Williams Fund		1993

**Suwannee Valley Funds**  
The Suwannee Valley Community Foundation is an affiliate fund of The Community Foundation for Northeast Florida, and comprises Columbia, Hamilton, Lafayette, Suwannee and Union counties. It is governed by a local advisory board.

<b>Suwannee Valley Funds</b>		
Helen Davis Brown Endowment Fund		2009
Campbell Park Endowment		2006
Columbia County Senior Services, Inc. Endowment Fund		2011
Robert and Elizabeth Haven Fund		2010
James H. Montgomery Suwannee Valley Endowment		2004
Marion C. Persons Charitable Fund		2003
Marion Carson Persons Charitable Fund		2007
Suwannee Valley Community Foundation Unrestricted Endowment		2005
Suwannee Valley Grantmaking Fund		2005

# What's next for the Community Foundation for Northeast Florida

## Looking Forward

Build a Better Community is one of the pillars of The Community Foundation's Strategic Plan. It is incumbent upon us to regularly review how we are meeting needs and addressing opportunities.

2015 was a listening year for us, as we reached out to approximately 75 leaders from area nonprofit, governmental, business, and philanthropic communities through a series of focus groups and personal interviews. We asked:

### What would it look like to build a better community?

- » To what degree are nonprofits currently able to play their roles in addressing community priorities?
- » What do they need to be able to fill their community role more effectively?

### What role(s) should The Community Foundation play in building a better community?

Their feedback validated the work we are already deeply involved in—education, the arts, early childhood, neighborhoods and aging adults—but also surfaced deep and widespread concern about growing challenges that exist in neighborhoods in our city.

Our board of trustees has committed to exploring how we could use The Community Foundation's unique position to add knowledge and resources to this critical issue, and we will spend much of 2016 doing the necessary listening and research to determine how we can be most effective.



## » What would it look like to build a better community?



Strengthen challenged neighborhoods



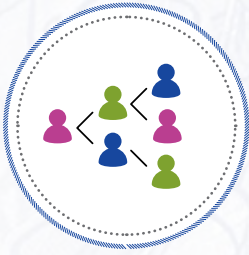
Build a more cohesive community



Continue to invest in education

## » To what degree are nonprofits currently able to play their roles in addressing community priorities?

## » What do they need to be able to fill their community role more effectively?



Our strongest nonprofits want greater external influence



Strengthen small and developing nonprofit organizations



Nonprofits value time spent in collaboration and systems-building

## » What role(s) should The Community Foundation play in building a better community?



Convener



Awareness Raiser/  
Donor Educator



Consensus Builder



Behind the scenes  
Connector/Broker/  
Mediator



Board Members

Members of The Community Foundation's Board of Trustees generously volunteer their time and talents to ensure that The Community Foundation grows and prospers so that Northeast Florida can benefit forever. The full Board meets four times a year and the Audit, Finance, Investment, Governance, and Program and Initiatives committees meet regularly as well.



William D. Brinton  
Chairman



Deborah Pass Durham  
Chairman Elect



Martha Baker



Solomon G. Brotman



Peggy Bryan



The Honorable  
Brian J. Davis



Michael DuBow



Robert Hill, Jr.



Charles D. Hyman



Paul Perez



Madeline Scales-Taylor



Ryan A. Schwartz



Dori Walton



Tracey Westbrook



Jim Winston

Meet the Staff



Seated (from left to right)

- Yan Cumper

Katie Patterson

Monica Brown

Kathleen Shaw

Erin Broderick

Nina Waters
- Amber Jubinsky

Susan Datz Edelman

Carol Nieves

Teri Calinao

Amy Crane

Latrice Wright

Standing (from left to right)

- Joanne Cohen

Denys Zayets

Grace Sacerdote

Jackie Werner
- Christina Fleck

John Zell

Mark LeMaire

Summary Audited Statements  
of Financial Position

AS OF DECEMBER 31, 2015 AND 2014

Assets	2015	2014
Cash and cash equivalents	\$64,692,318	\$40,936,131
Pooled investments	219,967,071	238,330,784
Other assets	27,991,737	34,141,498
Total Assets	\$312,651,126	\$313,408,413

Liabilities & Net Assets	2015	2014
Current liabilities	\$33,421,733	\$33,464,063
Foundation net assets	279,229,393	279,944,350
Total Liabilities & Net Assets	\$312,651,126	\$313,408,413

Summary Audited Statements of Activities

FOR THE YEARS ENDED DECEMBER 31, 2015 AND 2014

Revenue & Support	2015	2014
Gifts received	\$44,316,375	\$48,296,125
Net investment returns	(5,482,142)	9,828,010
Other	(266,715)	781,225
Total Revenue & Support	\$38,567,518	\$58,905,360

Expenses	2015	2014
Grants awarded and programs	\$36,761,474	\$50,915,212
Support services	2,515,378	2,329,404
Other	5,623	8,647
Total Grants & Expenses	\$39,282,475	\$53,253,263

	2015	2014
Change in Net Assets	\$ (714,957)	\$5,652,097
Net Assets (Beginning of Year)	\$279,944,350	\$274,292,253
Net Assets (End of Year)	\$279,229,393	\$279,944,350